

# Excavators Electric Material Handlers

**ER 934 C - ER 954 C**  
High Rise High Rise

ER 934 C Operating Weight: 56,200 – 56,600 kg  
ER 944 C Operating Weight: 73,400 – 74,700 kg  
ER 954 C Operating Weight: 95,800 – 97,000 kg



# LIEBHERR

## ER 934 C Litronic®

Operating Weight: 56,200 – 56,600 kg  
Engine Capacity: 160 kW/218 PS

## ER 944 C Litronic®

Operating Weight: 73,400 – 74,700 kg  
Engine Capacity: 200 kW/272 PS

## ER 954 C Litronic®

Operating Weight: 95,800 – 97,000 kg  
Engine Capacity: 250 kW/340 PS



## Performance

These new electric Material Handlers have been designed to meet the specific needs of industrial handling. A range of equipment even wider for the High Rise and upper-carriages optimized for long working radius provide the ideal answer to all the demands which arise in the industry.

The performance of the kinematic chain formed from components from our in-house production, combined with the power of the electric motor, maximize the performance of the machine when it comes to lifting power, precision, and speed of operation. The equipment's performance is enhanced by the mobility provided by the crawler undercarriage as well as the height of work adapted to the industrial process.

## Reliability

Backed by more than 30 years experience in the construction of electric excavators, Liebherr designed the new ER 934 C, ER 944 C and ER 954 C High Rise with the aim of providing top performance whatever the challenge might be. The structure of the machine, using components from our own manufacture for the electric drive, has been completely rethought, and so moves away from simply being an adaptation of a diesel-engine machine. Being intended for key functions in the organization of industrial sites, Liebherr electric Material Handlers provide a very high level of reliability. The service life of the hydraulic components has also been increased, thanks to the constant regime of the electric drive. The concept of the single actuator (one single electric motor for all the hydraulic functions) allows all the low-voltage functions to be concentrated in a single box.

## Comfort

Helping the operator to concentrate on his work and get the best out of his machine is achieved by providing a comfortable driving position, good panoramic visibility, and a highly ergonomic layout of the controls. The new electric Material Handlers offer the same level of comfort as on the thermal excavators (arrangement of the controls, driver's seat, climate control, large window areas, etc.). The electric motor system adds a further layer of comfort thanks to the low noise emissions and absence of vibration. For Liebherr, comfort also means ease of daily maintenance of the machine in terms of access to the service and inspection points, so as to minimize down time.

## Economy

Investing in the acquisition of an electric Material Handler is a great long-term advantage. Constant increases in the costs of conventional energy sources are pushing up operating charges, and reducing profit margins considerably. Environmental criteria, in particular CO<sub>2</sub> emissions, are also playing a constantly greater part in the choice of power systems and working methods. With the electric drive, Liebherr offers an economical alternative to conventional diesel-engine machines, and a solution with real respect for the environment. Also, the excavator is permanently available, with no need to refill. There are no constraints (e.g. DPF or AdBlue). Mobility is added to economy, through custom cable reels solutions.



# Excavator electric at a glance

## Cab with special control panel

- Control power on/off of the excavator
- Additional interface for the cable reel option



## Integrated electric cabinet

- Hard conditions
- Pressure relief system to prevent the intrusion of dust
- Closing with padlocks
- Robust



## Wide range of tools, including

- Grapples
- Shells for Loose Material
- Wood clamps
- Quick change adapter



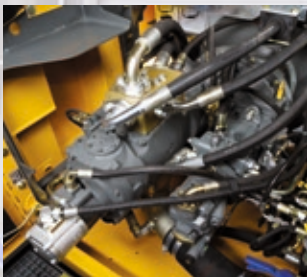
## Wide range of equipments

- Range of equipments from the stationary excavators for a moving machine
- Special adjustments on demand



## Kinematic chain Liebherr

- High work precision
- Immediate response
- Large power for maximum productivity



## Electric motor

- Hard conditions
- Constant regime whatever the load
- Integrated sensors for maximum availability





#### Cab elevation

- Wide range of rigid cab elevation and adjustable hydraulically
- High visibility of the working area and the site



#### Access

- As standard, safety and comfort to access the work space
- Handrails, non-slip surfaces



#### Walkways

- Wide walkways and handrails all around the excavator
- Can be fitted with secure trapdoors, wicket doors



#### Undercarriage

- Derived from thermal excavators, specifically equipped for electric excavators :
  - cable entry
  - power connector
  - slip ring collector
- Stability for all operations

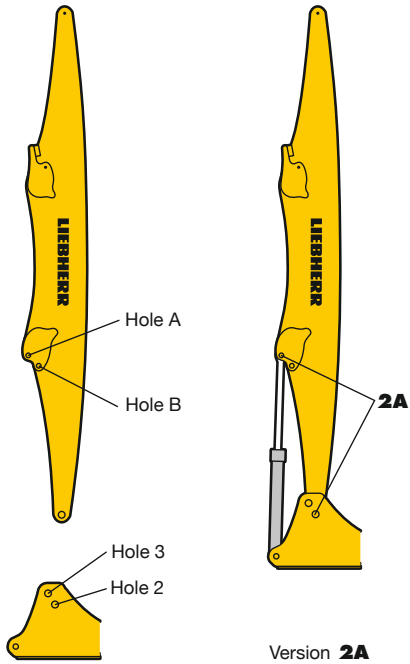


#### Cable entry

- In free-standing, cable left entry as standard, right or rear on demand
- Rear cable reel for a large radius of action and movement facilities
- Side cable reel for in-line processes

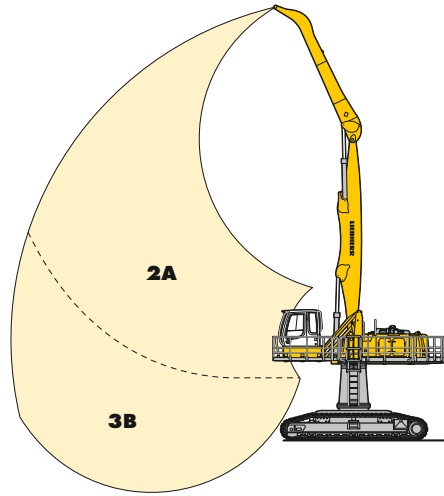
# VarioLiftPlus

## Variable Boom Mounting Positions for Optimized Lift Capacities



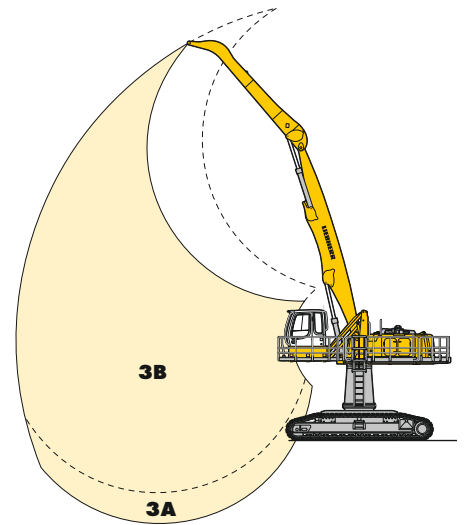
Version **2A**

with **the same** working range

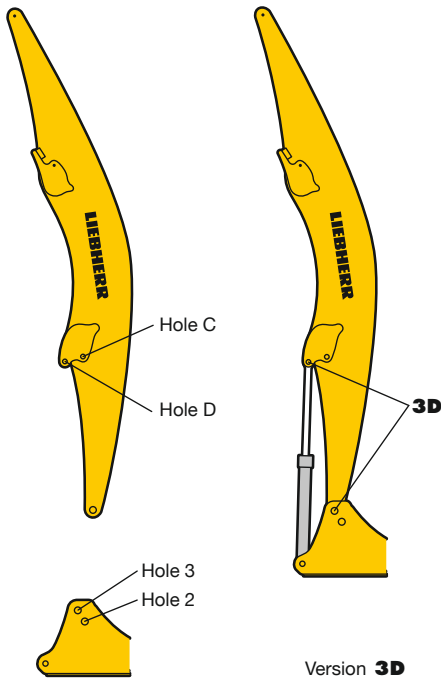


**Kinematic variant 2A:**  
Increased lift capacities above ground level  
**Kinematic variant 3B:**  
Increased lift capacities below ground level and when working at large outreach

with a **different** working range

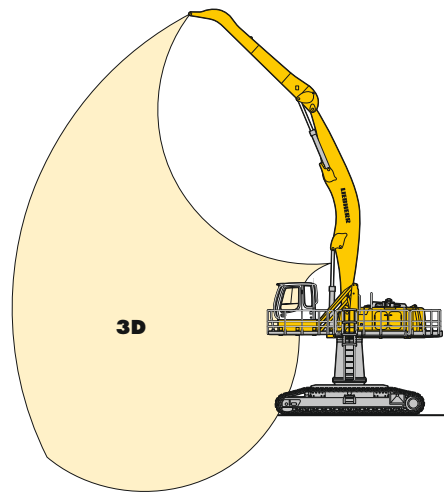


**Kinematic variant 3A:**  
Altered range curve with additional reach depth, e.g. for unloading from ships

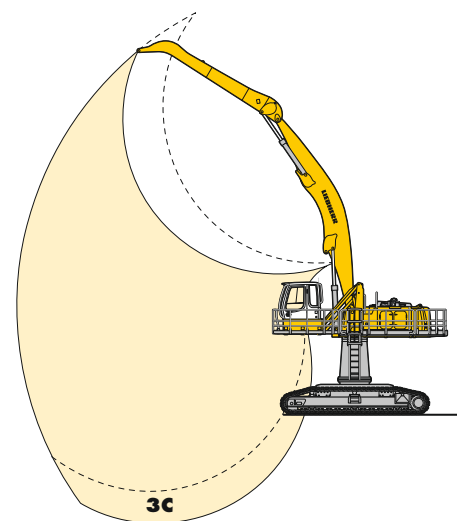


Version **3D**

with a **different** working range



**Kinematic variant 3D:**  
Increased lift capacities below ground level and when working at large outreach



**Kinematic variant 3C:**  
Altered range curve with additional reach depth, e.g. for unloading from ships

# Technical Data



## Electric Motor

|  |   |                 |                 |
|--|---|-----------------|-----------------|
| Engine                                     | induction motor dedicated definition Liebherr |                 |                 |
|  | 934   | 944             | 954             |
| Power rating<br>(as per CEI 34-1)          | 160 kW (218 HP)                               | 200 kW (272 HP) | 250 kW (340 HP) |
| Rated voltage                              | 400 V – 50 Hz*                                |                 |                 |
| Number of poles                            | 4   |                 |                 |
| Design type                                | horizontal axle B35<br>axle height 315 mm     |                 |                 |
| Standard degree of protection              | IP55  |                 |                 |
| Insulation                                 | class F                                       |                 |                 |
| Cooling                                    | IC06  |                 |                 |
| Heat protection for windings               |   |                 |                 |
| Heat protection for bearings               |   |                 |                 |
| Anti-condensation heating system resistors |   |                 |                 |



## Electric System

The 400 V electrical cabinet provides a degree of protection to IP55. This houses the following components:

- Electrical cabinet – remote control inside the cab
- Star/delta starter for motor
- Outlets for supplying auxiliary elements: heating, climate control
- Overheat protection devices
- Integrated heating and ventilation
- Filtered booster
- Transformers – rectifier for 24 V control circuit
- Motor protection
- Auxiliary batteries: 2 x 135 Ah/12 V: secured functions: lighting for excavator/attachment position (option)
- Connecting inside closed panel
- Equipment: slip ring collector  
power connector  
embedded cable reel



## Hydraulic System

|                                       |   |                |                |
|---------------------------------------|---|----------------|----------------|
|                                       | 934   | 944            | 954            |
| Hydraulic pump<br>for the attachment  | two Liebherr swash plate pumps with variable output   |                |                |
| Max. flow                             | 2 x 253 l/min.  | 2 x 305 l/min. | 2 x 341 l/min. |
| Max. pressure                         | 350 bar   |                |                |
| Pumpenansteuerung                     | electro-hydraulic, with electronic regulation by power limit, minimum pump flow at max. pressure, distribution of oil to different receptor components proportional to demand |                |                |
| Hydraulic pump<br>for the swing drive | reversible swash plate pump, in closed circuit  |                |                |
| Max. flow                             | 170 l/min.  | 205 l/min.     | 205 l/min.     |
| Max. pressure                         | 370 bar   |                |                |
| Hydraulic tank                        | 340 l   | 460 l          | 440 l          |
| Hydraulic system                      | 550 l   | 710 l          | 790 l          |
| Filtration                            | 934: filter in the return circuit, with integrated fine filter elements (5 µm)<br>944/954: 2 filters in the return circuit, with integrated fine filter elements (5 µm)       |                |                |
| Cooling                               | radiator equipped with hydrostatic drive fan for cooling the hydraulic oil and climate control condenser  |                |                |
| Tool Control                          | 10 flow rates and pressures adjustable as option for optional accessories   |                |                |



## Hydraulic Controls

|                      |  |
|----------------------|--|
| Power distribution   | with the aid of hydraulic distributors with integrated safety valves |
| Flow summation       | to boom stick and stick  |
| Closed-loop circuit  | for uppercarriage swing drive mechanism                              |
| Control              |  |
| Attachment and swing | proportional by handling element in cross operation                  |
| Travel               | proportional by pedals or by lever                                   |
| Additional functions | proportional by pedals or by toggle switch                           |



## Swing Drive

|               |  |             |             |
|---------------|--|-------------|-------------|
| Drive by      | hydraulic swash plate motor with integrated brake valves             |             |             |
| Transmission  | Liebherr compact planetary reduction gear                            |             |             |
| Swing ring    | Liebherr, sealed single race ball bearing swing ring, internal teeth |             |             |
|               | 934  | 944         | 954         |
| Swing speed   | 0 – 9.4 RPM  | 0 – 7.9 RPM | 0 – 5.6 RPM |
|               | stepless   | stepless    | stepless    |
| Swing torque  | 81.07 kNm  | 119 kNm     | 167.23 kNm  |
| Holding brake | oil-bath disk brake (negative action)                                |             |             |
| Option        | pedal controlled positioning brake                                   |             |             |



## Operator's Cab

|                            |   |           |           |
|----------------------------|---|-----------|-----------|
| Cab                        | single shell concept with shaped profiles, resiliently mounted, sound insulated, tinted windows. Front window can be folded away under roof, door with sliding window   |           |           |
| Operator's seat            | shock absorbing suspension, adjustable to operator's weight, 6-way adjustable seat integrated into adjustable seat consoles   |           |           |
| Controls                   | menu driven digital display of current operating conditions. Automatic monitoring, display, warning (audible and visual signal) and saving of machine malfunction data, such as overheating of windings, motor bearings, or low hydraulic oil level |           |           |
| Monitoring                 | standard climate control system, combined cooler/heater, additional dust filter in the outside/fresh air circuit  |           |           |
| Climate control            |   |           |           |
| Noise emission<br>ISO 6396 | 934   | 944       | 954       |
| $L_{pA}$ (inside cab)      | 66 dB(A)  | 65 dB(A)  | 67 dB(A)  |
| 2000/14/EC                 |   |           |           |
| $L_{WA}$ (surround noise)  | 102 dB(A)   | 103 dB(A) | 105 dB(A) |



## Undercarriage

|                               |  |                  |                  |
|-------------------------------|--|------------------|------------------|
| Version HR                    |  |                  |                  |
| Drive                         | Liebherr swash plate motors with integrated brake valves on both sides |                  |                  |
| Transmission                  | Liebherr planetary reduction gears                                     |                  |                  |
|                               | 934  | 944              | 954              |
| Travel speed                  | 2.6 km/h   | 2.6 km/h         | 2.5 km/h         |
| Drawbar pull max.             | 318 kN   | 363 kN           | 397 kN           |
| Track components              | maintenance-free   | maintenance-free | maintenance-free |
|                               | B 60   | D 7 G            | D 8 K            |
| Track rollers/Carrier rollers | 9/2  | 13/3             | 13/3             |
| Tracks                        | sealed and greased   |                  |                  |
| Track pads                    | triple grouser   |                  |                  |
| Digging locks                 | wet multi-discs (spring applied, pressure released)                    |                  |                  |
| Brake valves                  | integrated into travel motor   |                  |                  |



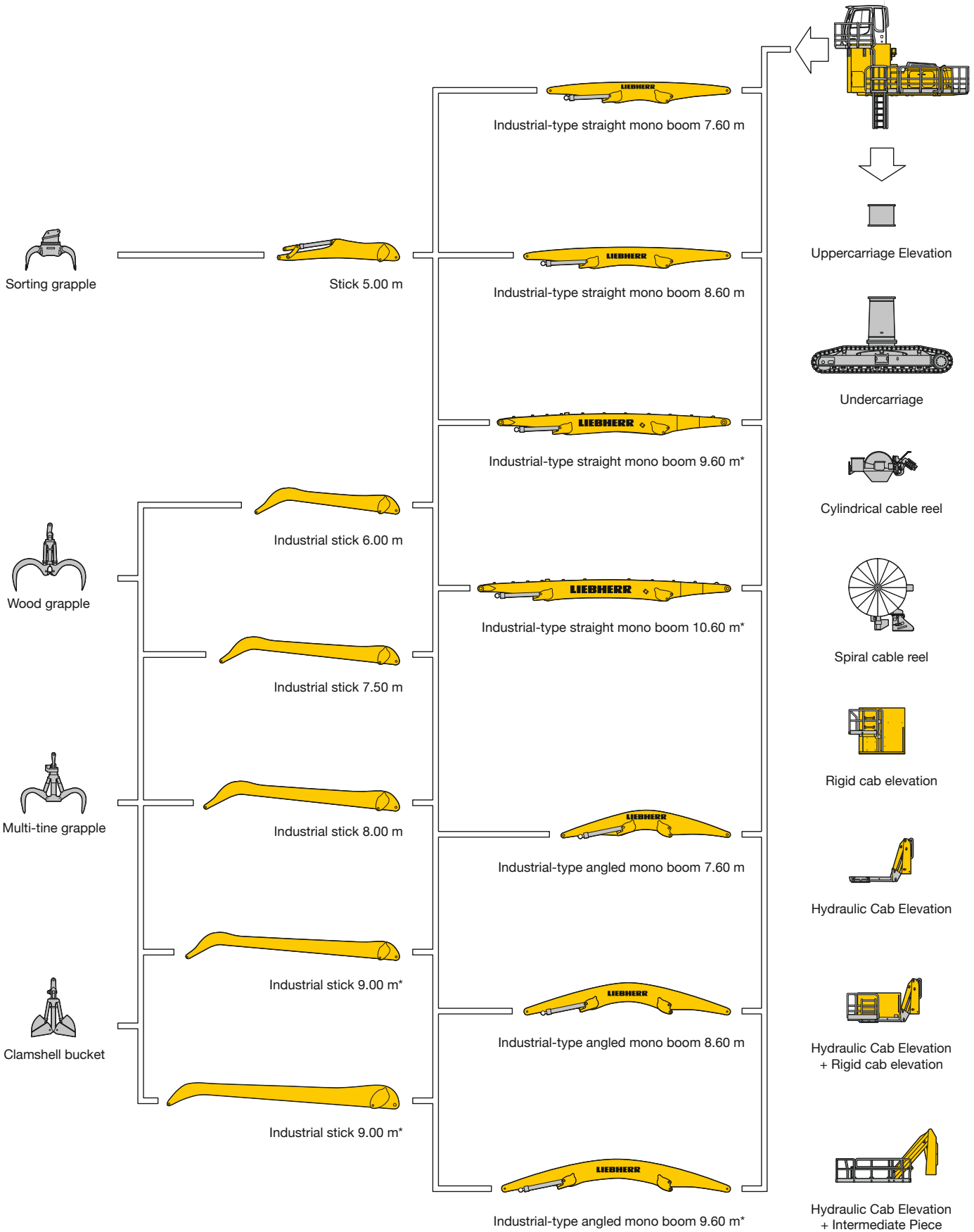
## Attachment

|                     |  |
|---------------------|--|
| Type                | high-strength steel for extreme stresses. Bearings designed for optimum distribution of stresses |
| Hydraulic cylinders | Liebherr cylinders with end-of-travel shock absorbing, fitted with guide and sealing joints      |
| Pivots              | sealed, low maintenance  |
| Lubrication         | centralised semi-automatic Liebherr lubrication system   |
| VarioLiftPlus       | variable boom mounting positions for optimized lift capacities                                   |

\* Other voltages and frequencies possible on request.

# The Right Attachment for Every Application

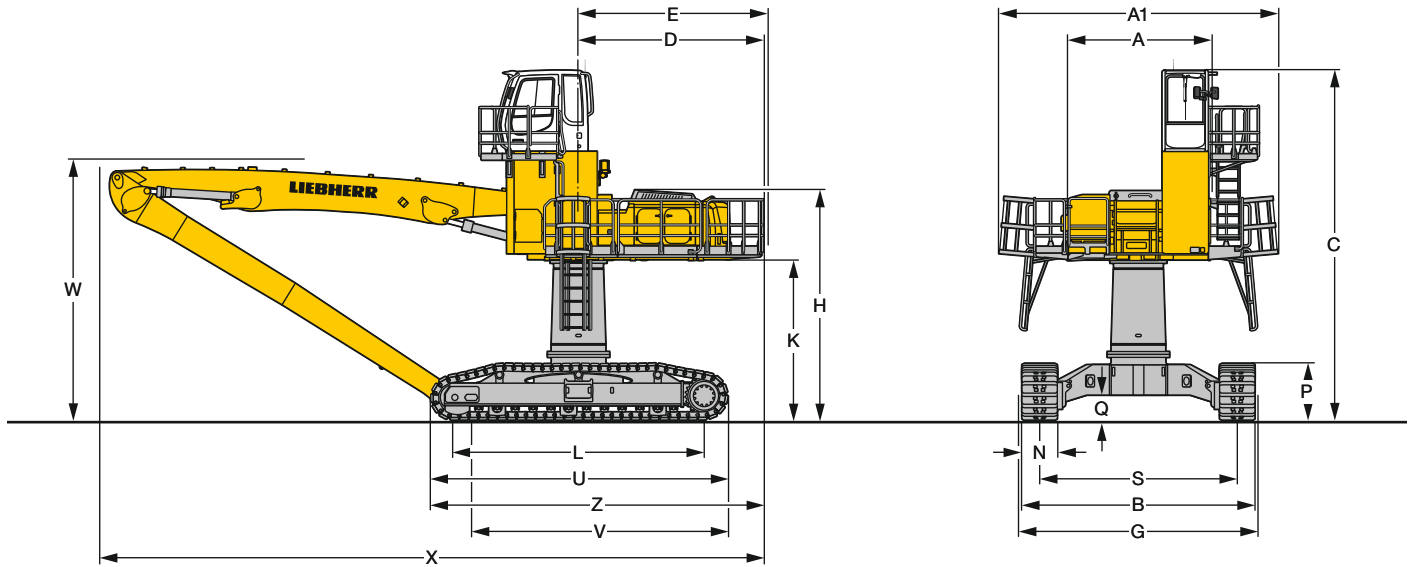
ER 934 C



\* presented configurations



# Dimensions



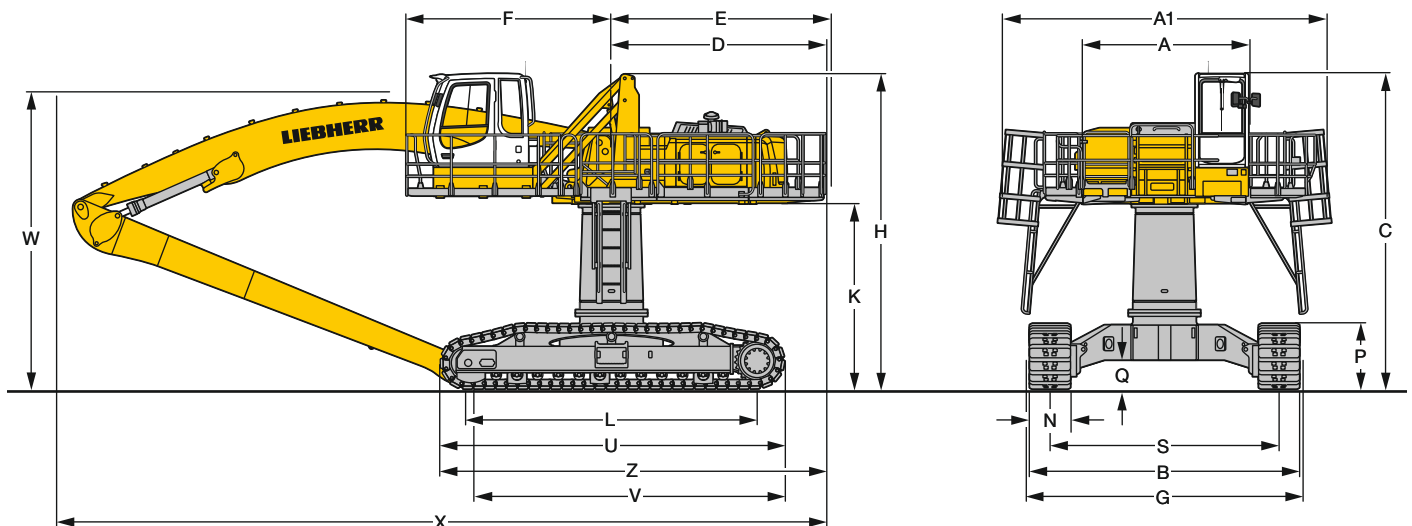
|    | mm    |
|----|-------|
| A  | 3,225 |
| A1 | 5,935 |
| C  | 5,800 |
| D  | 3,930 |
| E  | 4,030 |
| F  | 3,770 |
| H  | 5,780 |
| K  | 3,395 |
| L  | 5,350 |
| P  | 1,215 |
| Q  | 530   |
| S  | 4,200 |
| U  | 6,320 |
| N  | 750   |
| B  | 4,950 |
| G  | 5,060 |
| Z  | 7,095 |

| Industrial-Type Straight Mono Boom 9.60 m and Industrial Stick |    |        |        |
|--|----|--------|--------|
|  | m  | 9.00   | 10.00  |
| V  | mm | 5,800  | 5,450  |
| W  | mm | 4,850  | 5,550  |
| X  | mm | 14,100 | 14,100 |

| Industrial-Type Straight Mono Boom 10.60 m and Industrial Stick |    |        |        |
|---|----|--------|--------|
|   | m  | 9.00   | 10.00  |
| V   | mm | 6,950  | 6,000  |
| W   | mm | 4,900  | 4,900  |
| X   | mm | 15,100 | 15,100 |

| Industrial-Type Angled Mono Boom 9.60 m and Industrial Stick |    |        |        |
|--|----|--------|--------|
|  | m  | 9.00   | 10.00  |
| V  | mm | 5,700  | 5,500  |
| W  | mm | 5,450  | 6,500  |
| X  | mm | 14,100 | 14,100 |

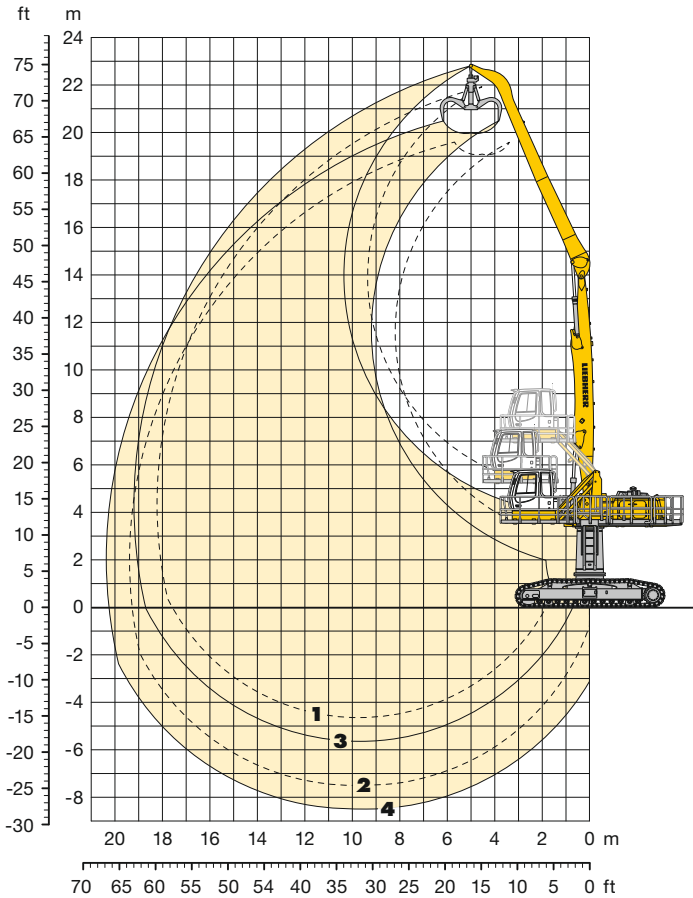
E = Tail radius



# Industrial Attachment

with Industrial-Type Straight Mono Boom 9.60 m

ER 934 C



## Attachment Envelope

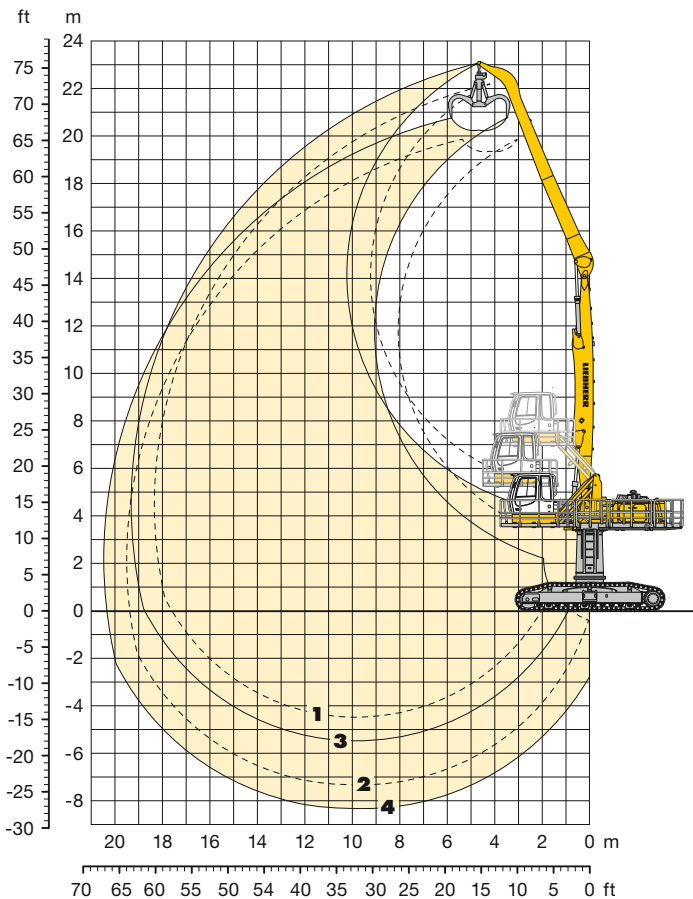
Kinematic variants 2A

- 1 with industrial stick 9.00 m
- 2 with industrial stick 9.00 m and grapple model GM 70C
- 3 with industrial stick 10.00 m
- 4 with industrial stick 10.00 m and grapple model GM 70C

## Operating Weight and Ground Pressure

Operating weight includes basic machine with hydraulic cab elevation + intermediate piece 0.5 m, counterweight 7.5 t, industrial-type straight mono boom 9.60 m, industrial stick 9.00 m and grapple model GM 70C with 5 semi-closed tines 0.80 m<sup>3</sup> (1,705 kg).

| Undercarriage   | HR                      |
|-----------------|-------------------------|
| Pad width       | mm 750                  |
| Weight          | kg 56,200               |
| Ground pressure | kg/cm <sup>2</sup> 0.70 |



## Attachment Envelope

Kinematic variants 3B

- 1 with industrial stick 9.00 m
- 2 with industrial stick 9.00 m and grapple model GM 70C
- 3 with industrial stick 10.00 m
- 4 with industrial stick 10.00 m and grapple model GM 70C

## Operating Weight and Ground Pressure

Operating weight includes basic machine with hydraulic cab elevation + intermediate piece 0.5 m, counterweight 7.5 t, industrial-type straight mono boom 9.60 m, industrial stick 10.00 m and grapple model GM 70C with 5 semi-closed tines 0.80 m<sup>3</sup> (1,705 kg).

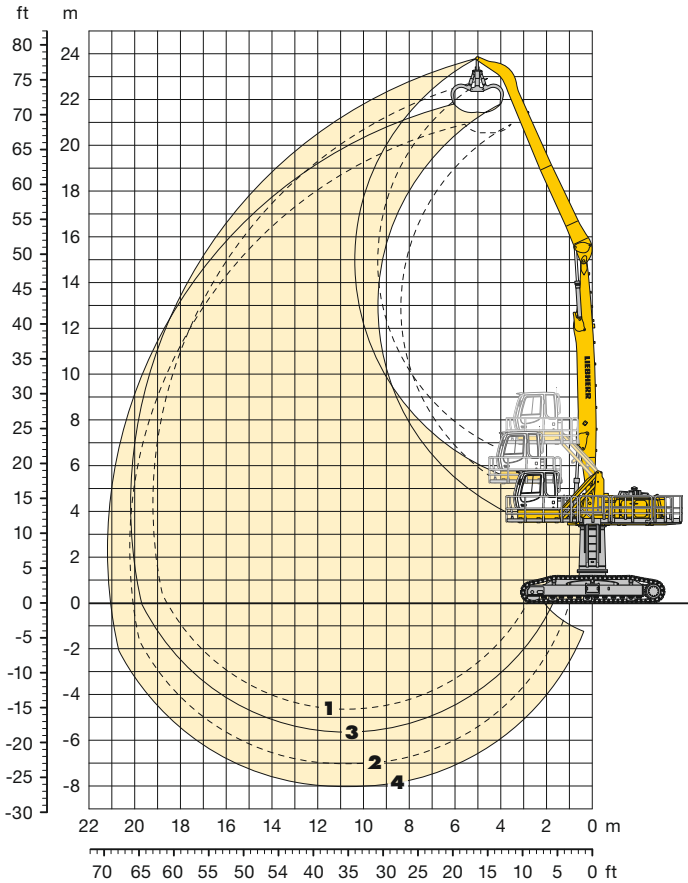
| Undercarriage   | HR                      |
|-----------------|-------------------------|
| Pad width       | mm 750                  |
| Weight          | kg 56,400               |
| Ground pressure | kg/cm <sup>2</sup> 0.70 |





# Industrial Attachment

with Industrial-Type Straight Mono Boom 10.60 m



## Attachment Envelope

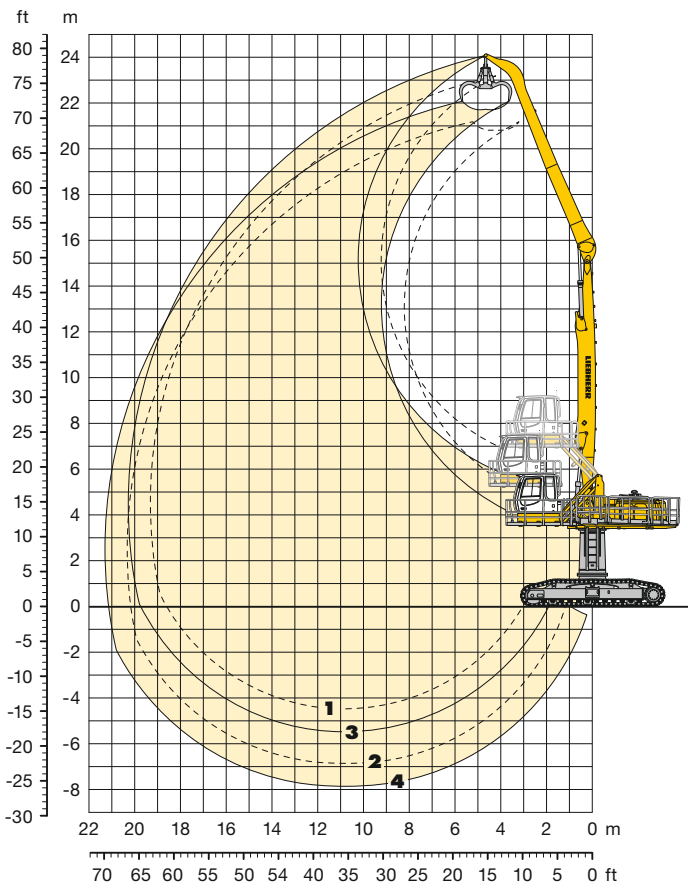
Kinematic variants 2A

- 1 with industrial stick 9.00 m
- 2 with industrial stick 9.00 m and grapple model GM 65
- 3 with industrial stick 10.00 m
- 4 with industrial stick 10.00 m and grapple model GM 65

## Operating Weight and Ground Pressure

Operating weight includes basic machine with hydraulic cab elevation + intermediate piece 0.5 m, counterweight 7.5 t, industrial-type straight mono boom 10.60 m, industrial stick 9.00 m and grapple model GM 65 with 5 semi-closed tines 0.60 m<sup>3</sup> (1,415 kg).

| Undercarriage   | HR                      |
|-----------------|-------------------------|
| Pad width       | mm 750                  |
| Weight          | kg 56,200               |
| Ground pressure | kg/cm <sup>2</sup> 0.70 |



## Attachment Envelope

Kinematic variants 3B

- 1 with industrial stick 9.00 m
- 2 with industrial stick 9.00 m and grapple model GM 65
- 3 with industrial stick 10.00 m
- 4 with industrial stick 10.00 m and grapple model GM 65

## Operating Weight and Ground Pressure

Operating weight includes basic machine with hydraulic cab elevation + intermediate piece 0.5 m, counterweight 7.5 t, industrial-type straight mono boom 10.60 m, industrial stick 10.00 m and grapple model GM 65 with 5 semi-closed tines 0.60 m<sup>3</sup> (1,415 kg).

| Undercarriage   | HR                      |
|-----------------|-------------------------|
| Pad width       | mm 750                  |
| Weight          | kg 56,400               |
| Ground pressure | kg/cm <sup>2</sup> 0.70 |

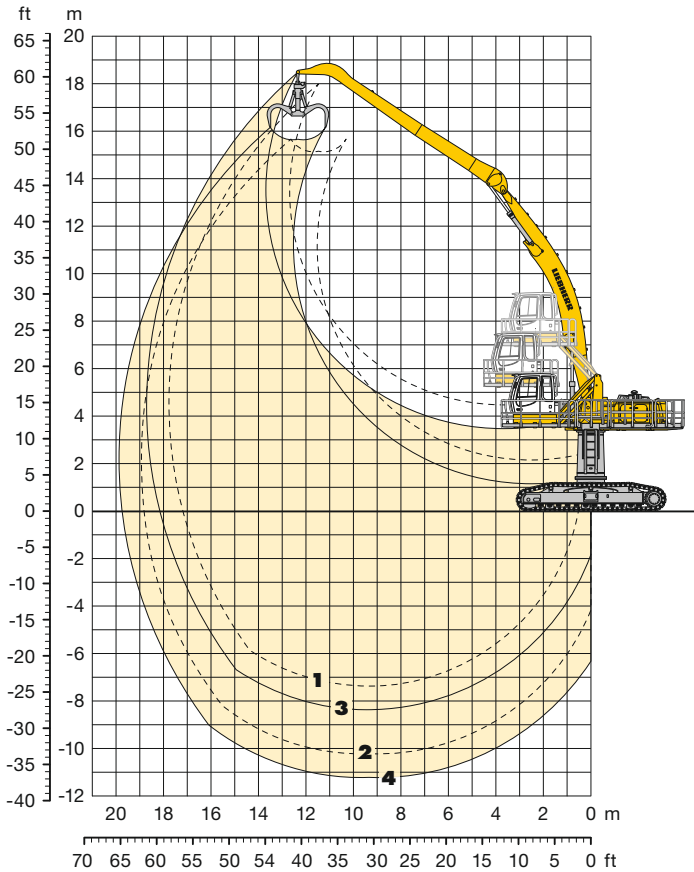




# Industrial Attachment

with Industrial-Type Angled Mono Boom 9.60 m

ER 934 C



## Attachment Envelope

Kinematic variant 3C

- 1** with industrial stick 9.00 m
- 2** with industrial stick 10.00 m
- 3** with industrial stick 9.00 m and grapple model GM 70C
- 4** with industrial stick 10.00 m and grapple model GM 70C

## Operating Weight and Ground Pressure

Operating weight includes basic machine with hydraulic cab elevation + intermediate piece 0.5 m, counterweight 7.5 t, industrial-type angled mono boom 9.60 m, industrial stick 9.00 m and grapple model GM 70C with 5 semi-closed tines 0.80 m<sup>3</sup> (1,705 kg).

| Undercarriage   | HR                      |
|-----------------|-------------------------|
| Pad width       | mm 750                  |
| Weight          | kg 56,400               |
| Ground pressure | kg/cm <sup>2</sup> 0.70 |

Operating weight includes basic machine with hydraulic cab elevation + intermediate piece 0.5 m, counterweight 7.5 t, industrial-type angled mono boom 9.60 m, industrial stick 10.00 m and grapple model GM 70C with 5 semi-closed tines 0.80 m<sup>3</sup> (1,705 kg).

| Undercarriage   | HR                      |
|-----------------|-------------------------|
| Pad width       | mm 750                  |
| Weight          | kg 56,600               |
| Ground pressure | kg/cm <sup>2</sup> 0.70 |



# Lift Capacities

with Industrial-Type Angled Mono Boom 9.60 m

ER 934 C

## Industrial Stick 9.00 m (Variant 3C)

| ↑<br>m | Under-carriage | 3.0 m | 4.5 m | 6.0 m | 7.5 m | 9.0 m | 10.5 m | 12.0 m | 13.5 m | 15.0 m | 16.5 m | 18.0 m | 19.5 m | m    |      |      |      |      |      |      |
|--------|----------------|-------|-------|-------|-------|-------|--------|--------|--------|--------|--------|--------|--------|------|------|------|------|------|------|------|
| 18.0   | HR             |       |       |       |       |       |        |        |        |        |        |        |        |      |      |      |      |      |      |      |
| 16.5   | HR             |       |       |       |       |       |        |        |        |        |        |        |        | 3.2* | 3.2* | 13.0 |      |      |      |      |
| 15.0   | HR             |       |       |       |       |       |        |        | 3.5*   | 3.5*   |        |        |        | 3.1* | 3.1* | 14.3 |      |      |      |      |
| 13.5   | HR             |       |       |       |       |       |        |        | 3.4*   | 3.4*   | 3.3*   | 3.3*   |        | 3.0* | 3.0* | 15.3 |      |      |      |      |
| 12.0   | HR             |       |       |       |       |       |        |        | 3.4*   | 3.4*   | 3.4*   | 3.4*   |        | 2.9* | 2.9* | 16.1 |      |      |      |      |
| 10.5   | HR             |       |       |       |       |       |        |        | 3.5*   | 3.5*   | 3.4*   | 3.4*   | 3.2*   | 3.2* | 2.9* | 2.9* | 16.7 |      |      |      |
| 9.0    | HR             |       |       |       |       |       |        | 3.8*   | 3.8*   | 3.6*   | 3.6*   | 3.5*   | 3.5*   | 3.4* | 3.4* | 2.9* | 2.9* | 17.2 |      |      |
| 7.5    | HR             |       |       |       |       |       | 4.2*   | 4.2*   | 4.0*   | 4.0*   | 3.8*   | 3.8*   | 3.6*   | 3.6* | 3.5* | 3.5* | 2.9* | 2.9* | 17.5 |      |
| 6.0    | HR             |       |       |       |       | 5.1*  | 5.1*   | 4.6*   | 4.6*   | 4.3*   | 4.3*   | 4.0*   | 4.0*   | 3.8* | 3.8* | 3.6* | 3.6* | 3.0* | 3.0* | 17.7 |
| 4.5    | HR             | 17.3* | 17.3* | 11.0* | 11.0* | 8.3*  | 8.3*   | 6.7*   | 6.7*   | 5.8*   | 5.8*   | 5.1*   | 5.1*   | 4.6* | 4.6* | 4.2* | 4.2* | 3.9* | 3.9* | 17.8 |
| 3.0    | HR             | 3.5*  | 3.5*  | 11.4* | 11.4* | 9.8*  | 9.8*   | 7.7*   | 7.7*   | 6.4*   | 6.4*   | 5.5*   | 5.5*   | 4.9* | 4.9* | 4.4* | 4.4* | 4.1* | 4.1* | 17.7 |
| 1.5    | HR             | 3.0*  | 3.0*  | 6.3*  | 6.3*  | 10.9* | 10.9*  | 8.4*   | 8.4*   | 6.9*   | 6.9*   | 5.9*   | 5.9*   | 5.2* | 5.2* | 4.6* | 4.6* | 4.2* | 4.2* | 17.5 |
| 0      | HR             | 3.4*  | 3.4*  | 5.6*  | 5.6*  | 10.4* | 10.4*  | 9.0*   | 9.0*   | 7.4*   | 7.4*   | 6.2*   | 6.2*   | 5.4* | 5.4* | 4.8* | 4.8* | 4.3* | 4.3* | 17.2 |
| -1.5   | HR             | 3.9*  | 3.9*  | 5.6*  | 5.6*  | 9.1*  | 9.1*   | 9.4*   | 9.4*   | 7.7*   | 7.7*   | 6.5*   | 6.5*   | 5.6* | 5.6* | 4.9* | 4.9* | 4.4* | 4.4* | 16.7 |
| -3.0   | HR             | 4.4*  | 4.4*  | 5.9*  | 5.9*  | 8.8*  | 8.8*   | 9.6*   | 9.6*   | 7.8*   | 7.8*   | 6.6*   | 6.6*   | 5.7* | 5.7* | 5.0* | 5.0* | 4.4* | 4.4* | 16.1 |
| -4.5   | HR             | 4.9*  | 4.9*  | 6.4*  | 6.4*  | 9.0*  | 9.0*   | 9.5*   | 9.5*   | 7.8*   | 7.8*   | 6.6*   | 6.6*   | 5.6* | 5.6* | 4.9* | 4.9* | 4.2* | 4.2* | 15.3 |
| -6.0   | HR             |       |       |       |       | 9.5*  | 9.5*   | 9.1*   | 9.1*   | 7.5*   | 7.5*   | 6.3*   | 6.3*   | 5.4* | 5.4* | 4.5* | 4.5* |      |      | 14.1 |
| -7.5   | HR             |       |       |       |       |       |        |        |        |        |        |        |        |      |      |      |      |      |      |      |

## Industrial Stick 10.00 m (Variant 3C)

| ↑<br>m | Under-carriage | 3.0 m | 4.5 m | 6.0 m | 7.5 m | 9.0 m | 10.5 m | 12.0 m | 13.5 m | 15.0 m | 16.5 m | 18.0 m | 19.5 m | m    |      |      |      |      |      |      |      |      |      |      |
|--------|----------------|-------|-------|-------|-------|-------|--------|--------|--------|--------|--------|--------|--------|------|------|------|------|------|------|------|------|------|------|------|
| 18.0   | HR             |       |       |       |       |       |        |        |        |        |        |        |        | 2.9* | 2.9* | 12.9 |      |      |      |      |      |      |      |      |
| 16.5   | HR             |       |       |       |       |       |        |        |        |        |        |        |        | 2.7* | 2.7* | 14.3 |      |      |      |      |      |      |      |      |
| 15.0   | HR             |       |       |       |       |       |        |        |        |        |        |        |        | 2.6* | 2.6* | 15.5 |      |      |      |      |      |      |      |      |
| 13.5   | HR             |       |       |       |       |       |        |        |        |        |        |        |        | 2.5* | 2.5* | 16.4 |      |      |      |      |      |      |      |      |
| 12.0   | HR             |       |       |       |       |       |        |        |        |        |        |        |        | 2.4* | 2.4* | 17.2 |      |      |      |      |      |      |      |      |
| 10.5   | HR             |       |       |       |       |       |        |        | 3.1*   | 3.1*   | 3.0*   | 3.0*   |        | 2.4* | 2.4* | 17.7 |      |      |      |      |      |      |      |      |
| 9.0    | HR             |       |       |       |       |       |        |        | 3.2*   | 3.2*   | 3.2*   | 3.2*   | 3.1*   | 3.1* | 2.7* | 2.7* | 18.2 |      |      |      |      |      |      |      |
| 7.5    | HR             |       |       |       |       |       |        |        | 3.6*   | 3.6*   | 3.4*   | 3.4*   | 3.3*   | 3.3* | 3.2* | 3.2* | 3.1* | 3.1* | 18.5 |      |      |      |      |      |
| 6.0    | HR             |       |       |       |       |       |        |        | 4.1*   | 4.1*   | 3.9*   | 3.9*   | 3.6*   | 3.6* | 3.4* | 3.4* | 3.3* | 3.3* | 3.2* | 3.2* | 18.7 |      |      |      |
| 4.5    | HR             |       |       |       |       | 5.1*  | 5.1*   | 4.6*   | 4.6*   | 4.2*   | 4.2*   | 3.9*   | 3.9*   | 3.6* | 3.6* | 3.4* | 3.4* | 3.2* | 3.2* | 2.6* | 2.6* | 18.7 |      |      |
| 3.0    | HR             | 7.6*  | 7.6*  | 11.8* | 11.8* | 8.6*  | 8.6*   | 6.9*   | 6.9*   | 5.8*   | 5.8*   | 5.0*   | 5.0*   | 4.5* | 4.5* | 4.1* | 4.1* | 3.8* | 3.8* | 3.5* | 3.5* | 3.3* | 3.3* | 18.7 |
| 1.5    | HR             | 3.6*  | 3.6*  | 8.9*  | 8.9*  | 10.0* | 10.0*  | 7.8*   | 7.8*   | 6.4*   | 6.4*   | 5.5*   | 5.5*   | 4.8* | 4.8* | 4.3* | 4.3* | 3.9* | 3.9* | 3.6* | 3.6* | 3.4* | 3.4* | 18.5 |
| 0      | HR             | 3.4*  | 3.4*  | 6.2*  | 6.2*  | 11.0* | 11.0*  | 8.5*   | 8.5*   | 6.9*   | 6.9*   | 5.9*   | 5.9*   | 5.1* | 5.1* | 4.5* | 4.5* | 4.1* | 4.1* | 3.7* | 3.7* | 3.3* | 3.3* | 18.2 |
| -1.5   | HR             | 3.7*  | 3.7*  | 5.7*  | 5.7*  | 9.9*  | 9.9*   | 9.0*   | 9.0*   | 7.3*   | 7.3*   | 6.2*   | 6.2*   | 5.3* | 5.3* | 4.7* | 4.7* | 4.2* | 4.2* | 3.8* | 3.8* |      |      | 17.7 |
| -3.0   | HR             | 4.1*  | 4.1*  | 5.8*  | 5.8*  | 9.0*  | 9.0*   | 9.3*   | 9.3*   | 7.6*   | 7.6*   | 6.4*   | 6.4*   | 5.5* | 5.5* | 4.8* | 4.8* | 4.2* | 4.2* | 3.8* | 3.8* |      |      | 17.1 |
| -4.5   | HR             | 4.5*  | 4.5*  | 6.0*  | 6.0*  | 8.8*  | 8.8*   | 9.4*   | 9.4*   | 7.6*   | 7.6*   | 6.4*   | 6.4*   | 5.5* | 5.5* | 4.8* | 4.8* | 4.2* | 4.2* |      |      | 3.6* | 3.6* | 16.4 |
| -6.0   | HR             | 4.9*  | 4.9*  | 6.4*  | 6.4*  | 9.0*  | 9.0*   | 9.2*   | 9.2*   | 7.5*   | 7.5*   | 6.3*   | 6.3*   | 5.4* | 5.4* | 4.6* | 4.6* | 4.0* | 4.0* |      |      | 3.7* | 3.7* | 15.5 |
| -7.5   | HR             |       |       |       |       | 9.6*  | 9.6*   | 8.7*   | 8.7*   | 7.2*   | 7.2*   | 6.0*   | 6.0*   | 5.1* | 5.1* |      |      |      |      | 4.3* | 4.3* |      |      | 13.4 |

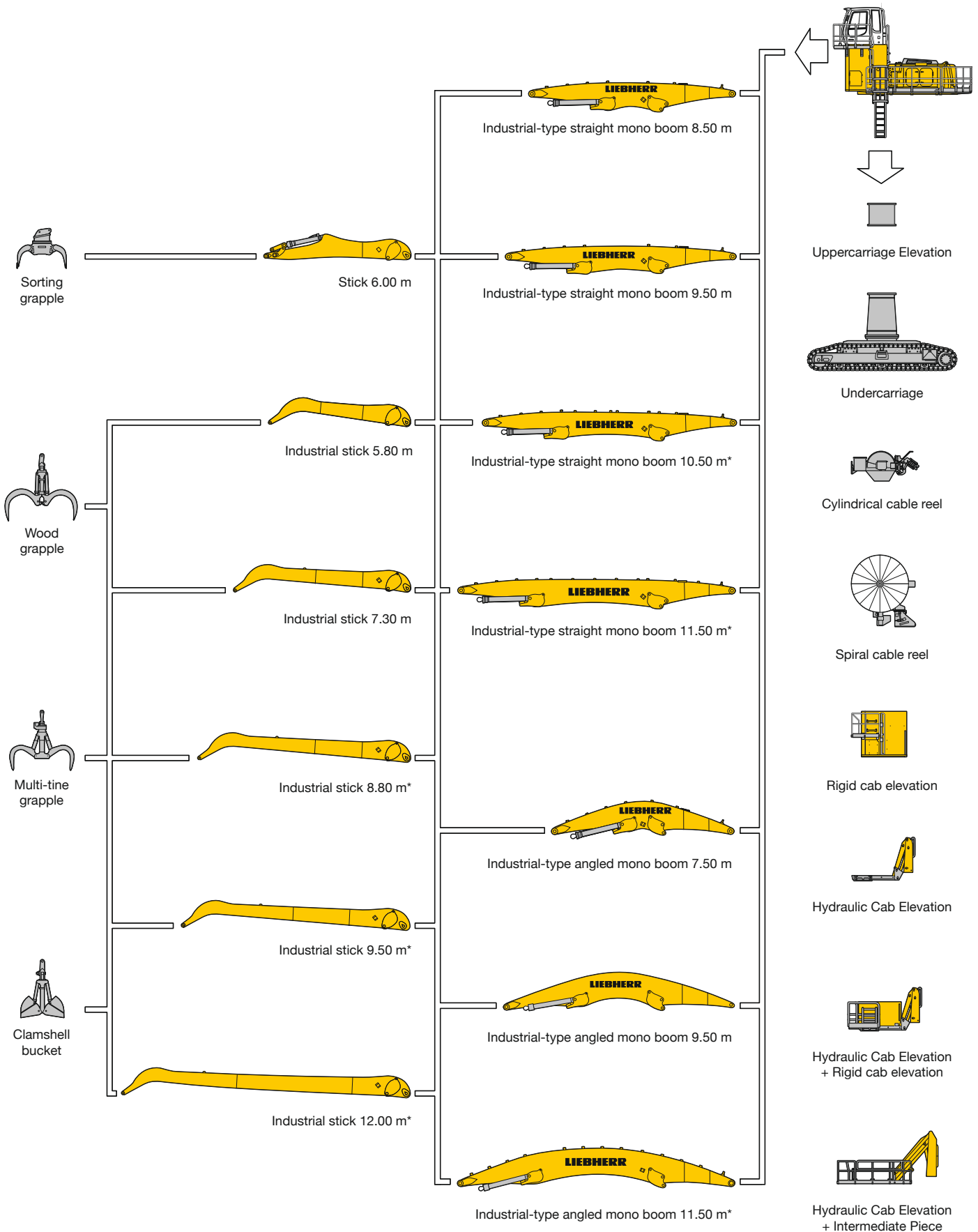
Height
 Can be slewed through 360°
 In longitudinal position of undercarriage
 Max. reach
 \* Limited by hydr. capacity

The lift capacities are stated in metric tonnes (t) on the lifting gear's stick tip, and can be lifted 360° on firm, level supporting surface. Capacities are valid for 750 mm track flat pads. Indicated loads are based on ISO 10567 standard and do not exceed 75 % of tipping or 87 % of hydraulic capacity (indicated via \*). Lifting capacity of the excavator is limited by machine stability, hydraulic capacity and maximum permissible load of the load hook.

According to European Standard, EN 474-5: In the European Union excavators have to be equipped with an overload warning device, a load diagram and automatic safety check valves on hoist cylinders and stick cylinder(s), when they are used for lifting operations which require the use of lifting accessories.

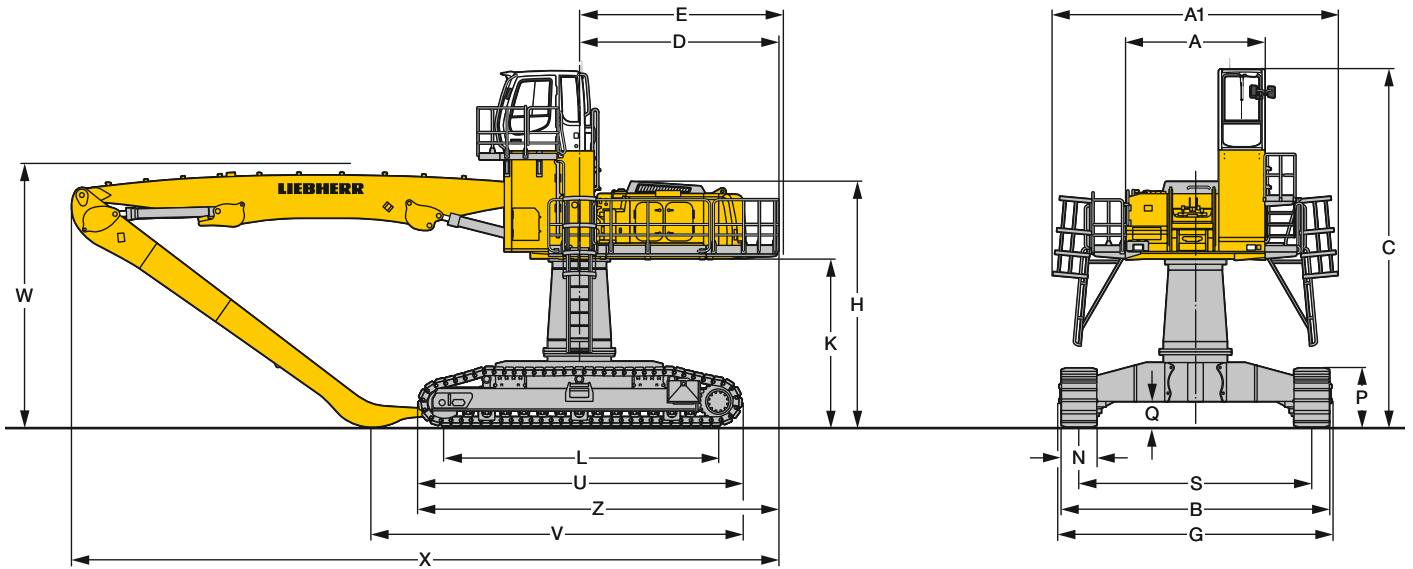
# The Right Attachment for Every Application

ER 944 C



\* presented configurations

# Dimensions



ER 944 C

|   | mm    |
|---|-------|
| A   | 3,070 |
| A1  | 6,150 |
| C with Rigid Cab Elevation 2 m  | 7,700 |
| C with Hydraulic Cab Elevation Parallelogram + Intermediate Piece 0,5 m | 6,170 |
| D   | 4,250 |
| E   | 4,350 |
| F   | 4,100 |
| H with Rigid Cab Elevation 2 m  | 5,300 |
| H with Hydraulic Cab Elevation Parallelogram + Intermediate Piece 0,5 m | 6,170 |
| K   | 3,600 |
| L   | 6,000 |
| P   | 1,280 |
| Q   | 555   |
| S   | 5,000 |
| U   | 7,000 |
| Z   | 7,750 |
| N   | 750   |
| B   | 5,830 |
| G   | 5,860 |

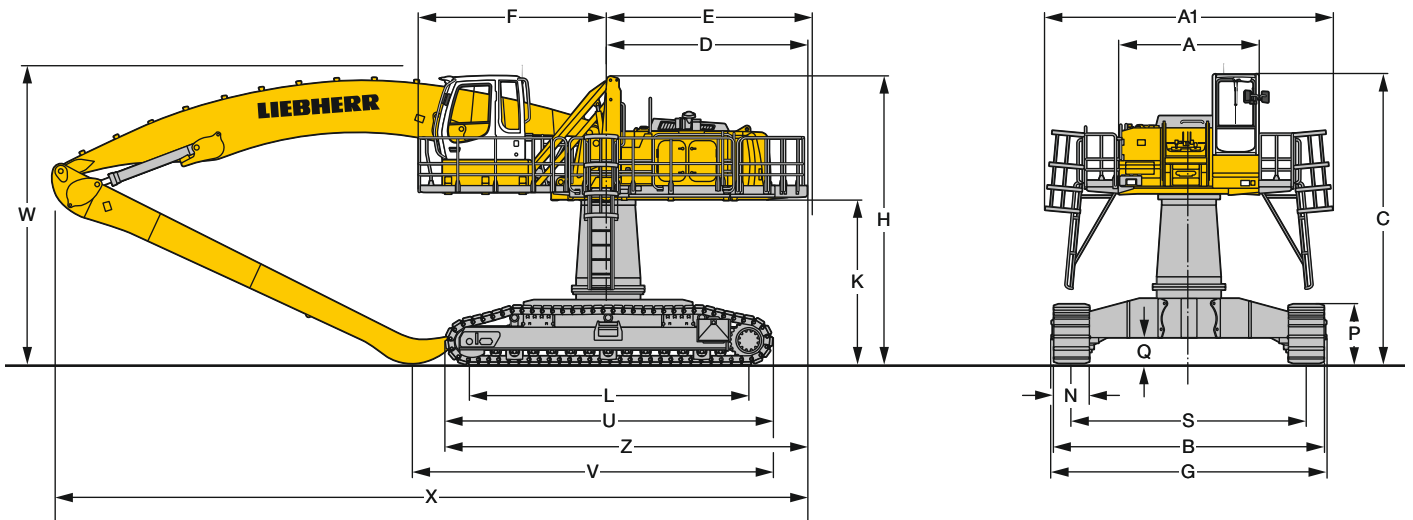
| Industrial-Type Straight Mono Boom 10.50 m and Industrial Stick |    |        |        |
|---|----|--------|--------|
|   | m  | 8.80   | 9.50   |
| V   | mm | 8,000  | 7,150  |
| W   | mm | 5,700  | 5,700  |
| X   | mm | 15,250 | 15,250 |

| Industrial-Type Straight Mono Boom 11.50 m and Industrial Stick |    |        |        |
|---|----|--------|--------|
|   | m  | 9.50   | 12.00  |
| V   | mm | 8,150  | *      |
| W   | mm | 5,700  | 5,700  |
| X   | mm | 16,250 | 16,250 |

| Industrial-Type Angled Mono Boom 11.50 m and Industrial Stick |    |        |        |
|---|----|--------|--------|
|   | m  | 9.50   | 12.00  |
| V   | mm | 7,400  | *      |
| W   | mm | 5,950  | 5,950  |
| X   | mm | 16,100 | 16,100 |

\* = without stick

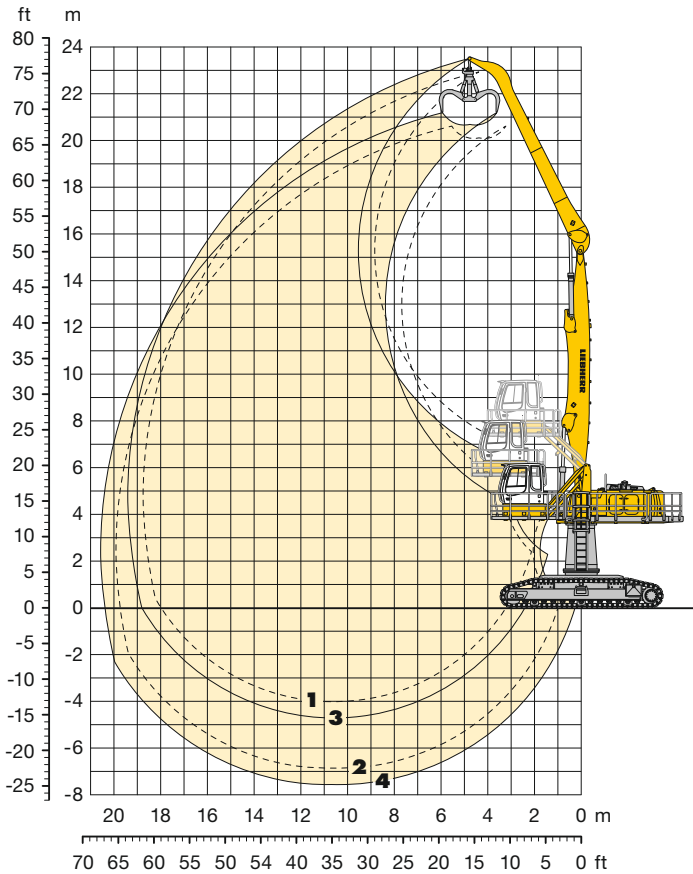
E = Tail radius



# Industrial Attachment

with Industrial-Type Straight Mono Boom 10.50 m

ER 944 C



## Attachment Envelope

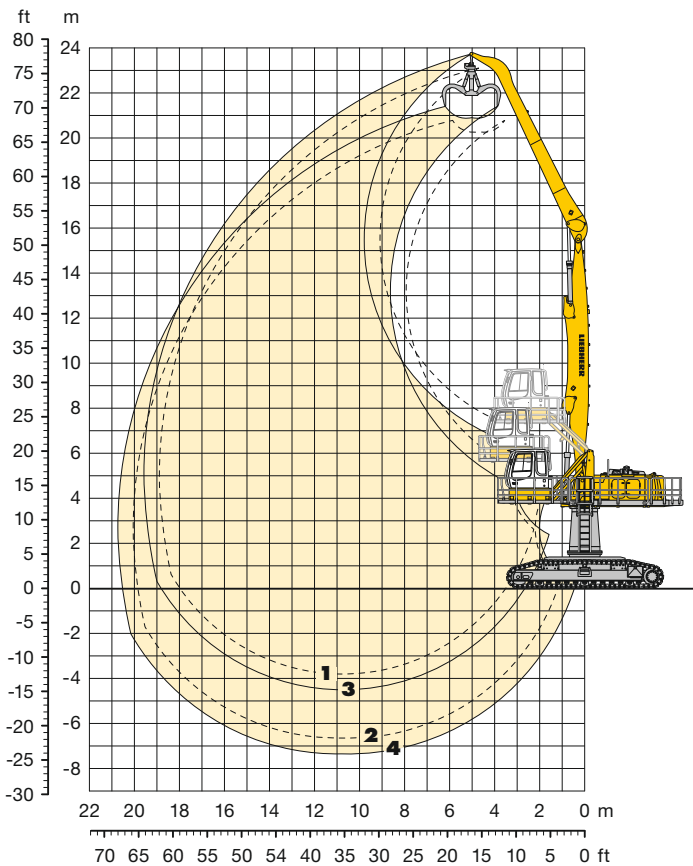
Kinematic variants 2A

- 1 with industrial stick 8.80 m
- 2 with industrial stick 8.80 m and grapple model GM 70C
- 3 with industrial stick 9.50 m
- 4 with industrial stick 9.50 m and grapple model GM 70C

## Operating Weight and Ground Pressure

Operating weight includes basic machine with hydraulic cab elevation + intermediate piece 0.5 m, counterweight 11.0 t, industrial-type straight mono boom 10.50 m, industrial stick 8.80 m and grapple model GM 70C with 5 semi-closed tines 1.10 m<sup>3</sup> (1,860 kg).

| Undercarriage   | HR                      |
|-----------------|-------------------------|
| Pad width       | mm 750                  |
| Weight          | kg 73,400               |
| Ground pressure | kg/cm <sup>2</sup> 0.82 |



## Attachment Envelope

Kinematic variants 3B

- 1 with industrial stick 8.80 m
- 2 with industrial stick 8.80 m and grapple model GM 70C
- 3 with industrial stick 9.50 m
- 4 with industrial stick 9.50 m and grapple model GM 70C

## Operating Weight and Ground Pressure

Operating weight includes basic machine with hydraulic cab elevation + intermediate piece 0.5 m, counterweight 11.0 t, industrial-type straight mono boom 10.50 m, industrial stick 9.50 m and grapple model GM 70C with 5 semi-closed tines 1.10 m<sup>3</sup> (1,860 kg).

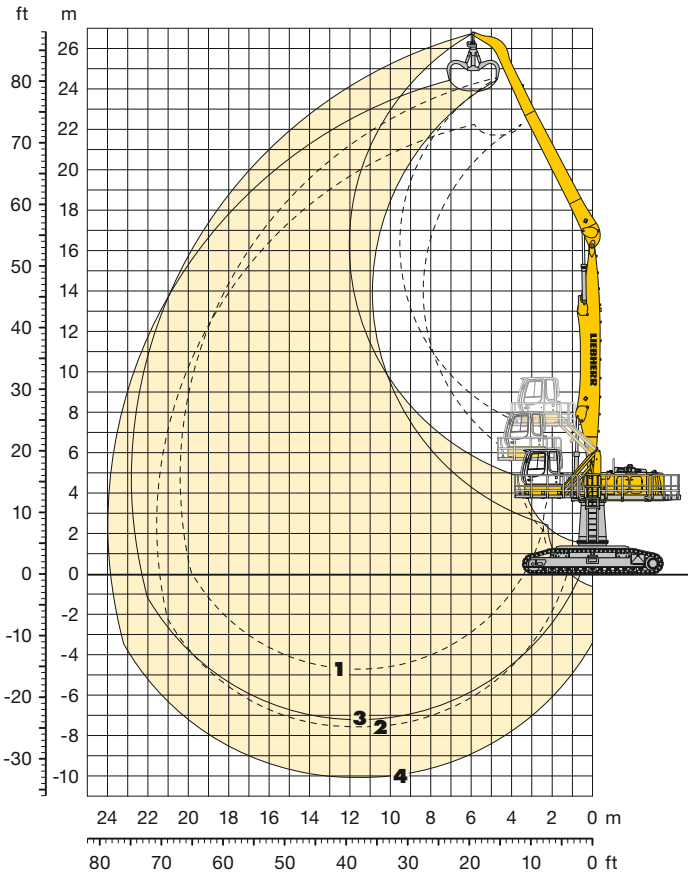
| Undercarriage   | HR                      |
|-----------------|-------------------------|
| Pad width       | mm 750                  |
| Weight          | kg 73,600               |
| Ground pressure | kg/cm <sup>2</sup> 0.82 |





# Industrial Attachment

with Industrial-Type Straight Mono Boom 11.50 m



## Attachment Envelope

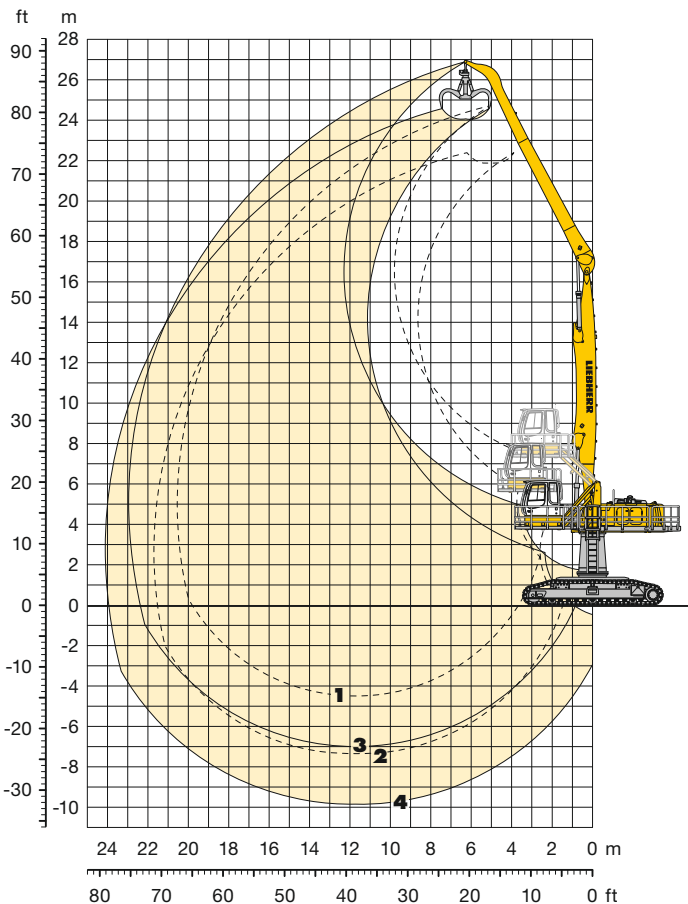
Kinematic variants 2A

- 1 with industrial stick 9.50 m
- 2 with industrial stick 9.50 m and grapple model GM 70C
- 3 with industrial stick 12.00 m
- 4 with industrial stick 12.00 m and grapple model GM 70C

## Operating Weight and Ground Pressure

Operating weight includes basic machine with hydraulic cab elevation + intermediate piece 0.5 m, counterweight 11.0 t, industrial-type straight mono boom 11.50 m, industrial stick 9.50 m and grapple model GM 70C with 5 semi-closed tines 0.80 m<sup>3</sup> (1,705 kg).

| Undercarriage   | HR                      |
|-----------------|-------------------------|
| Pad width       | mm 750                  |
| Weight          | kg 73,800               |
| Ground pressure | kg/cm <sup>2</sup> 0.82 |



## Attachment Envelope

Kinematic variants 3B

- 1 with industrial stick 9.50 m
- 2 with industrial stick 9.50 m and grapple model GM 70C
- 3 with industrial stick 12.00 m
- 4 with industrial stick 12.00 m and grapple model GM 70C

## Operating Weight and Ground Pressure

Operating weight includes basic machine with hydraulic cab elevation + intermediate piece 0.5 m, counterweight 11.0 t, industrial-type straight mono boom 11.50 m, industrial stick 12.00 m and grapple model GM 70C with 5 semi-closed tines 0.80 m<sup>3</sup> (1,705 kg).

| Undercarriage   | HR                      |
|-----------------|-------------------------|
| Pad width       | mm 750                  |
| Weight          | kg 74,500               |
| Ground pressure | kg/cm <sup>2</sup> 0.83 |



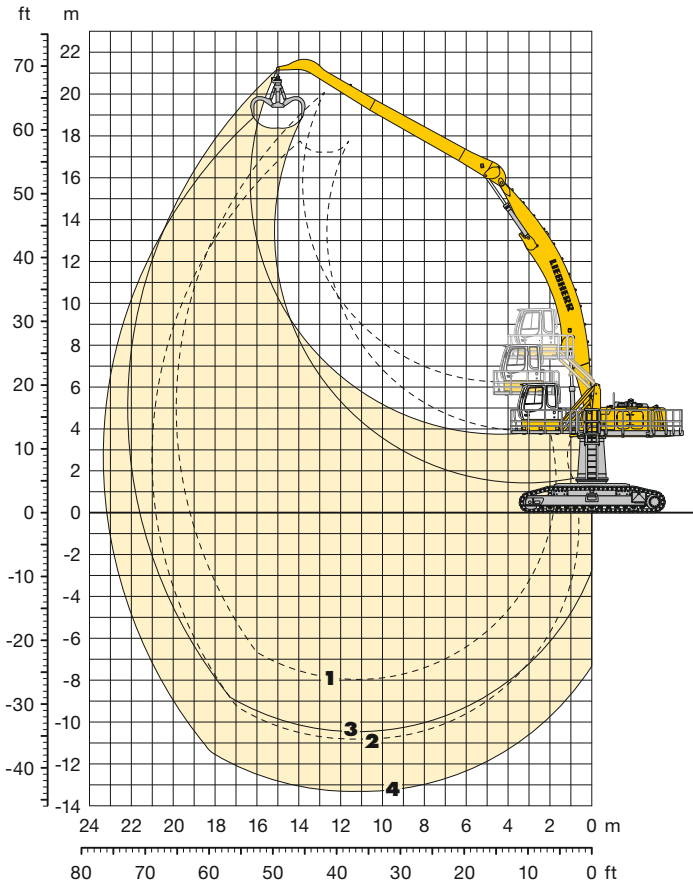




# Industrial Attachment

with Industrial-Type Angled Mono Boom 11.50 m

ER 944 C



## Attachment Envelope

Kinematic variant 3C

- 1** with industrial stick 9.50 m
- 2** with industrial stick 12.00 m
- 3** with industrial stick 9.50 m and grapple model GM 70C
- 4** with industrial stick 12.00 m and grapple model GM 70C

## Operating Weight and Ground Pressure

Operating weight includes basic machine with hydraulic cab elevation + intermediate piece 0.5 m, counterweight 11.0 t, industrial-type angled mono boom 11.50 m, industrial stick 9.50 m and grapple model GM 70C with 5 semi-closed tines 0.80 m<sup>3</sup> (1,705 kg).

| Undercarriage   | HR                      |
|-----------------|-------------------------|
| Pad width       | mm 750                  |
| Weight          | kg 74,000               |
| Ground pressure | kg/cm <sup>2</sup> 0.82 |

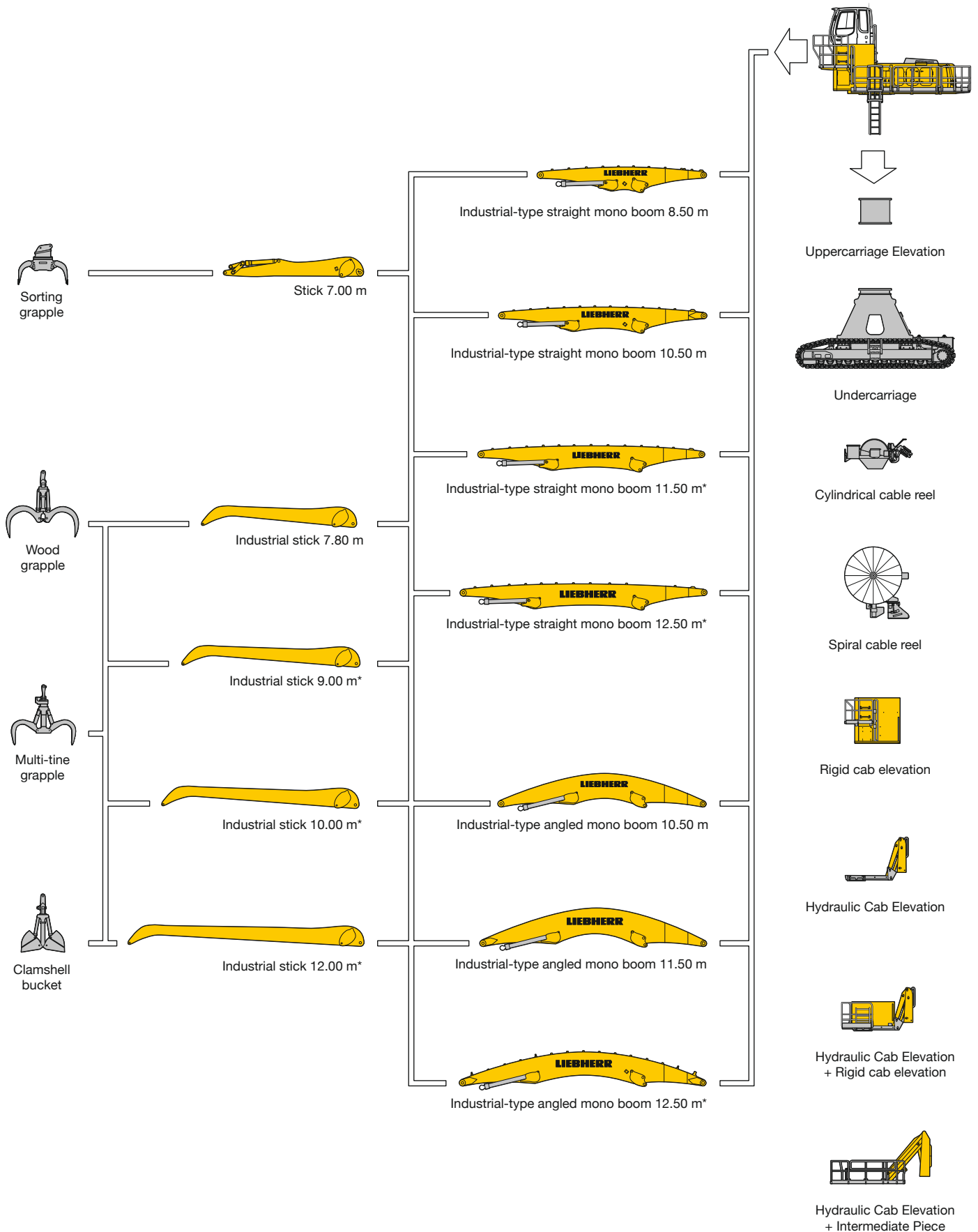
Operating weight includes basic machine with hydraulic cab elevation + intermediate piece 0.5 m, counterweight 11.0 t, industrial-type angled mono boom 11.50 m, industrial stick 12.00 m and grapple model GM 70C with 5 semi-closed tines 0.80 m<sup>3</sup> (1,705 kg).

| Undercarriage   | HR                      |
|-----------------|-------------------------|
| Pad width       | mm 750                  |
| Weight          | kg 74,700               |
| Ground pressure | kg/cm <sup>2</sup> 0.83 |



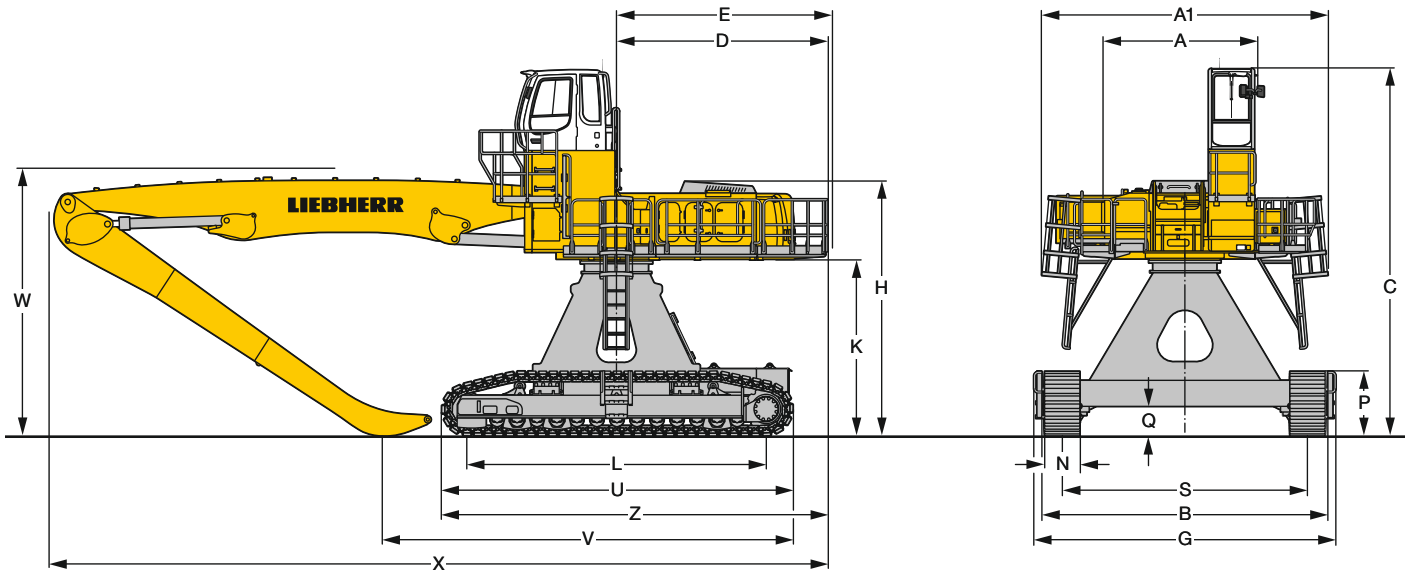
# The Right Attachment for Every Application

ER 954 C



\* presented configurations

# Dimensions



ER 954 C

|   | mm    |
|---|-------|
| A   | 3,300 |
| A1  | 5,320 |
| C with Rigid Cab Elevation  | 7,850 |
| C with Hydraulic Cab Elevation Parallelogram + Intermediate Piece 0,5 m | 6,350 |
| D   | 4,510 |
| E   | 4,600 |
| H with Rigid Cab Elevation  | 5,465 |
| H with Hydraulic Cab Elevation Parallelogram + Intermediate Piece 0,5 m | 6,340 |
| K   | 3,780 |
| L   | 6,400 |
| P   | 1,395 |
| Q   | 640   |
| S   | 5,250 |
| U   | 7,540 |
| Z   | 8,260 |
| N   | 750   |
| B   | 6,120 |
| G   | 6,450 |

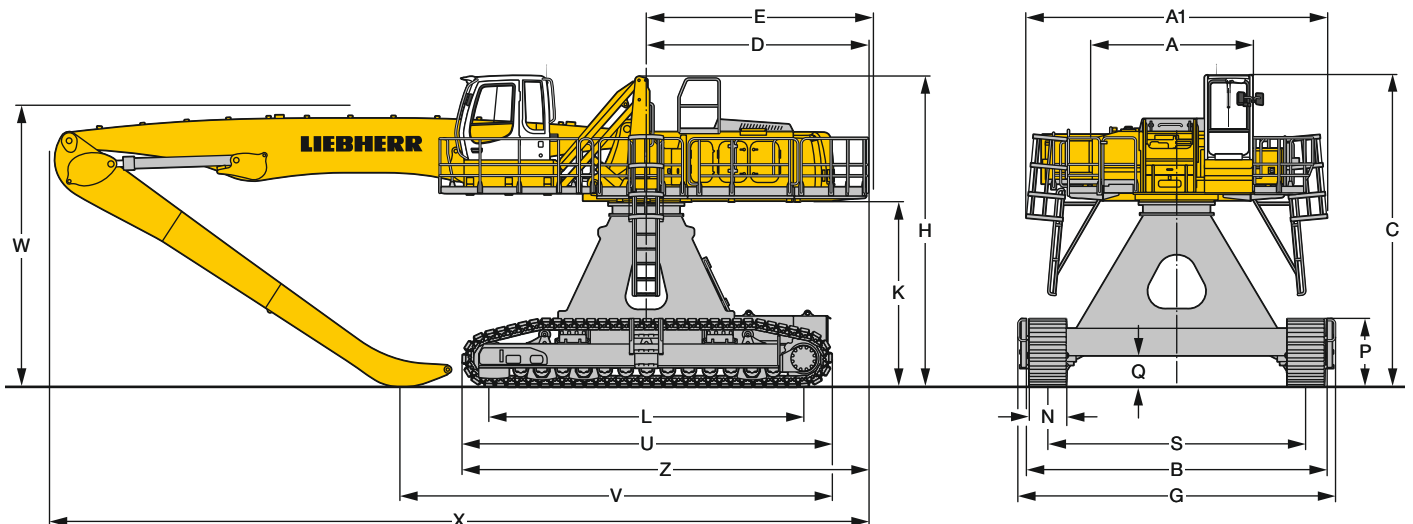
| Industrial-Type Straight Mono Boom 11.50 m and Industrial Stick |    |        |        |
|---|----|--------|--------|
| V   | m  | 9.00   | 10.00  |
| W   | mm | 8,800  | 8,200  |
| X   | mm | 5,800  | 5,800  |
| X   | mm | 16,650 | 16,650 |

| Industrial-Type Straight Mono Boom 12.50 m and Industrial Stick |    |        |        |
|---|----|--------|--------|
| V   | m  | 9.00   | 10.00  |
| W   | mm | 9,700  | 8,600  |
| W   | mm | 5,800  | 5,800  |
| X   | mm | 17,650 | 17,650 |

| Industrial-Type Angled Mono Boom 12.50 m and Industrial Stick |    |        |        |
|---|----|--------|--------|
| V   | m  | 9.00   | 10.00  |
| W   | mm | *      | *      |
| W   | mm | 5,800  | 5,800  |
| X   | mm | 17,100 | 17,100 |

\* = without stick

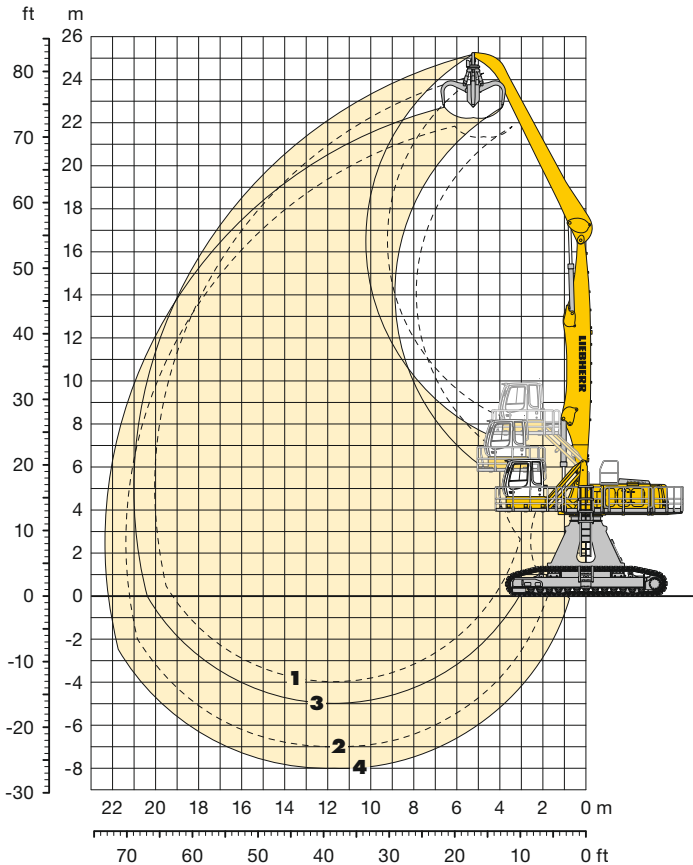
E = Tail radius



# Industrial Attachment

with Industrial-Type Straight Mono Boom 11.50 m

ER 954 C



## Attachment Envelope

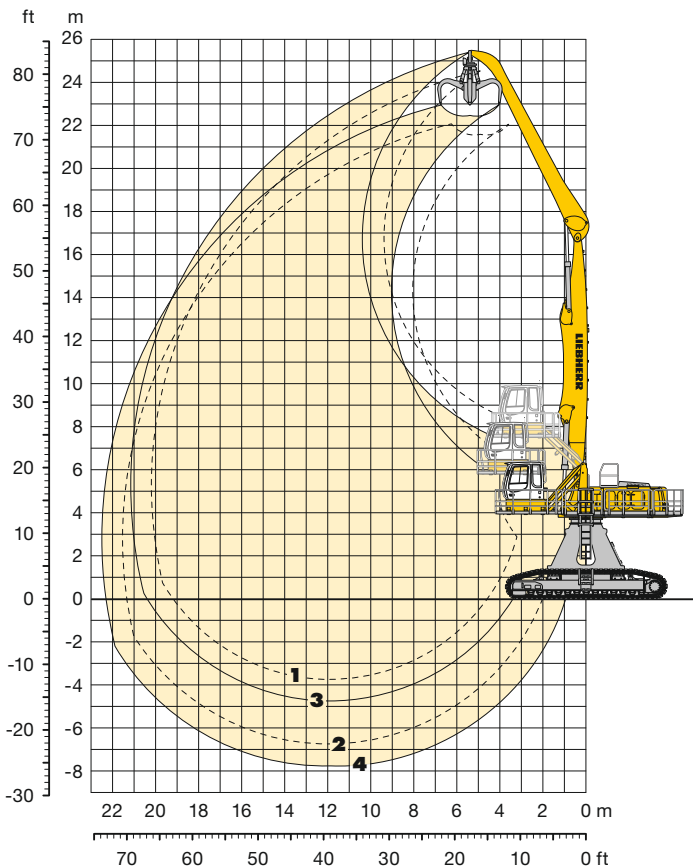
Kinematic variants 2A

- 1 with industrial stick 9.00 m
- 2 with industrial stick 9.00 m and grapple model GMM 80
- 3 with industrial stick 10.00 m
- 4 with industrial stick 10.00 m and grapple model GMM 80

## Operating Weight and Ground Pressure

Operating weight includes basic machine with hydraulic cab elevation + intermediate piece 0.5 m, counterweight 14.5 t, industrial-type straight mono boom 11.50 m, industrial stick 9.00 m and grapple model GMM 80 with 5 semi-closed tines 1.40 m<sup>3</sup> (2,480 kg).

| Undercarriage   | HR                      |
|-----------------|-------------------------|
| Pad width       | mm 750                  |
| Weight          | kg 95,800               |
| Ground pressure | kg/cm <sup>2</sup> 1.00 |



## Attachment Envelope

Kinematic variants 3B

- 1 with industrial stick 9.00 m
- 2 with industrial stick 9.00 m and grapple model GMM 80
- 3 with industrial stick 10.00 m
- 4 with industrial stick 10.00 m and grapple model GMM 80

## Operating Weight and Ground Pressure

Operating weight includes basic machine with hydraulic cab elevation + intermediate piece 0.5 m, counterweight 14.5 t, industrial-type straight mono boom 11.50 m, industrial stick 10.00 m and grapple model GMM 80 with 5 semi-closed tines 1.40 m<sup>3</sup> (2,480 kg).

| Undercarriage   | HR                      |
|-----------------|-------------------------|
| Pad width       | mm 750                  |
| Weight          | kg 96,200               |
| Ground pressure | kg/cm <sup>2</sup> 1.00 |

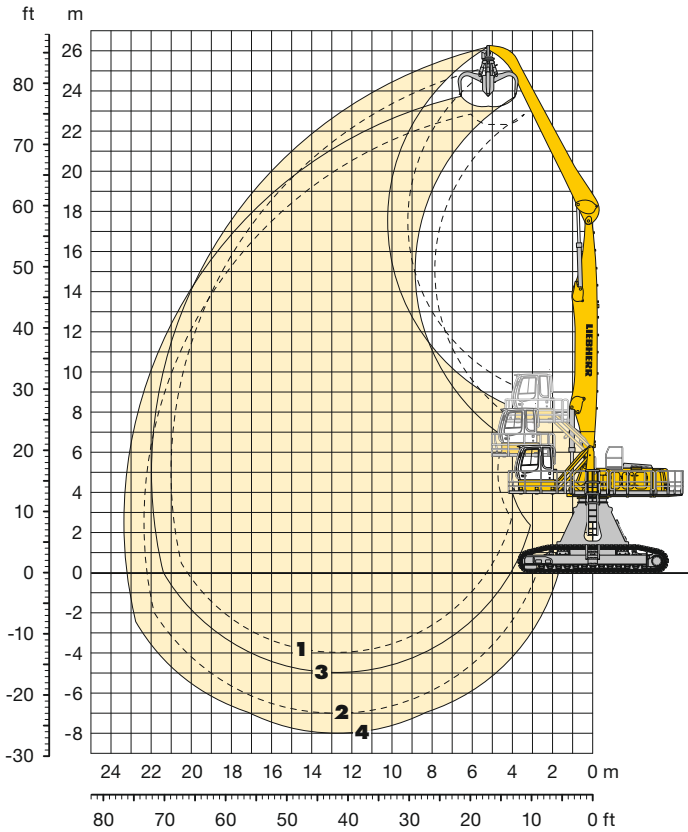






# Industrial Attachment

with Industrial-Type Straight Mono Boom 12.50 m



## Attachment Envelope

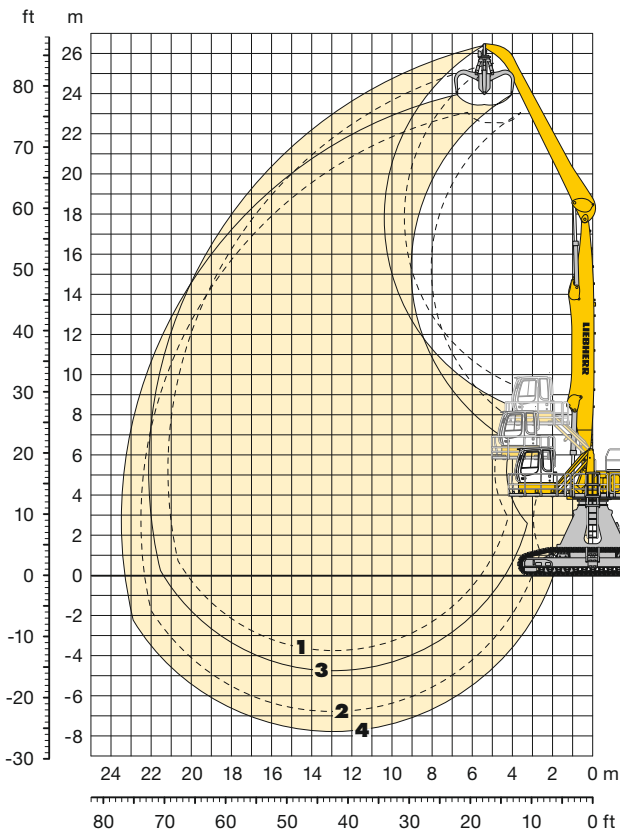
Kinematic variants 2A

- 1** with industrial stick 9.00 m
- 2** with industrial stick 9.00 m and grapple model GMM 80
- 3** with industrial stick 10.00 m
- 4** with industrial stick 10.00 m and grapple model GMM 80

## Operating Weight and Ground Pressure

Operating weight includes basic machine with hydraulic cab elevation + intermediate piece 0.5 m, counterweight 14.5 t, industrial-type straight mono boom 12.50 m, industrial stick 9.00 m and grapple model GMM 80 with 5 semi-closed tines 1.10 m<sup>3</sup> (2,400 kg).

| Undercarriage   | HR                      |
|-----------------|-------------------------|
| Pad width       | mm 750                  |
| Weight          | kg 96,200               |
| Ground pressure | kg/cm <sup>2</sup> 1.00 |



## Attachment Envelope

Kinematic variants 3B

- 1** with industrial stick 9.00 m
- 2** with industrial stick 9.00 m and grapple model GMM 80
- 3** with industrial stick 10.00 m
- 4** with industrial stick 10.00 m and grapple model GMM 80

## Operating Weight and Ground Pressure

Operating weight includes basic machine with hydraulic cab elevation + intermediate piece 0.5 m, counterweight 14.5 t, industrial-type straight mono boom 12.50 m, industrial stick 10.00 m and grapple model GMM 80 with 5 semi-closed tines 1.10 m<sup>3</sup> (2,400 kg).

| Undercarriage   | HR                      |
|-----------------|-------------------------|
| Pad width       | mm 750                  |
| Weight          | kg 96,600               |
| Ground pressure | kg/cm <sup>2</sup> 1.00 |

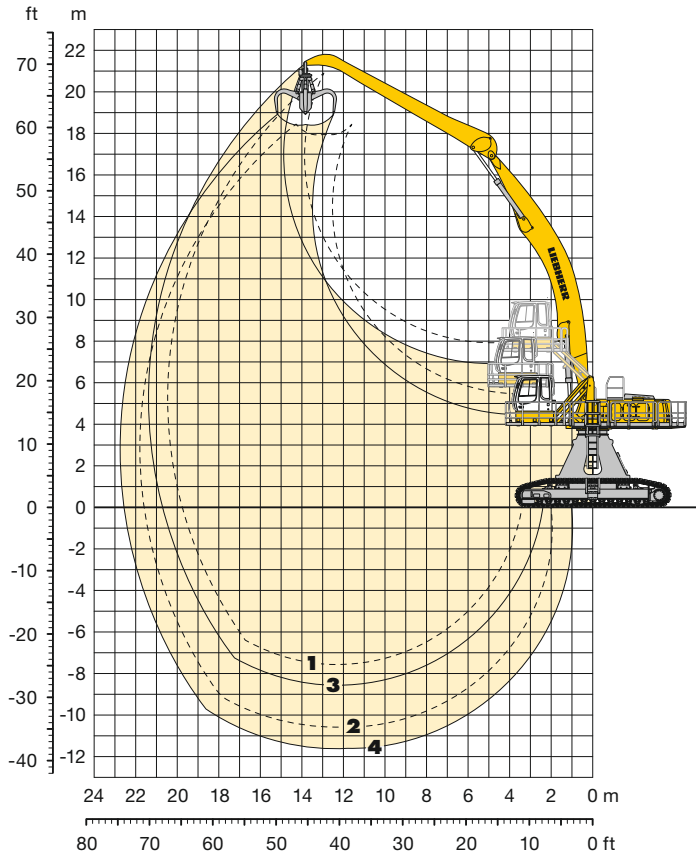




# Industrial Attachment

with Industrial-Type Angled Mono Boom 12.50 m

ER 954 C



## Attachment Envelope

Kinematic variant 3C

- 1** with industrial stick 9.00 m
- 2** with industrial stick 10.00 m
- 3** with industrial stick 9.00 m and grapple model GMM 80
- 4** with industrial stick 10.00 m and grapple model GMM 80

## Operating Weight and Ground Pressure

Operating weight includes basic machine with hydraulic cab elevation + intermediate piece 0.5 m, counterweight 14.5 t, industrial-type angled mono boom 12.50 m, industrial stick 9.00 m and grapple model GMM 80 with 5 semi-closed tines 1.10 m<sup>3</sup> (2,400 kg).

| Undercarriage   | HR                      |
|-----------------|-------------------------|
| Pad width       | mm 750                  |
| Weight          | kg 96,600               |
| Ground pressure | kg/cm <sup>2</sup> 1.01 |

Operating weight includes basic machine with hydraulic cab elevation + intermediate piece 0.5 m, counterweight 14.5 t, industrial-type angled mono boom 12.50 m, industrial stick 10.00 m and grapple model GMM 80 with 5 semi-closed tines 1.10 m<sup>3</sup> (2,400 kg).

| Undercarriage   | HR                      |
|-----------------|-------------------------|
| Pad width       | mm 750                  |
| Weight          | kg 97,000               |
| Ground pressure | kg/cm <sup>2</sup> 1.01 |

# Lift Capacities

with Industrial-Type Angled Mono Boom 12.50 m

## Industrial Stick 9.00 m (Variant 3C)

| ↕<br>m | Under-carriage | 3.0 m |  | 4.5 m |  | 6.0 m |  | 7.5 m |  | 9.0 m |  | 10.5 m |  | 12.0 m |  | 13.5 m |      | 15.0 m |      | 16.5 m |      | 18.0 m |      | 19.5 m |      | 21.0 m |      | m    |      |      |      |
|--------|----------------|-------|--|-------|--|-------|--|-------|--|-------|--|--------|--|--------|--|--------|------|--------|------|--------|------|--------|------|--------|------|--------|------|------|------|------|------|
|        |                |       |  |       |  |       |  |       |  |       |  |        |  |        |  |        |      |        |      |        |      |        |      |        |      |        |      |      |      |      |      |
| 21.0   | HR             |       |  |       |  |       |  |       |  |       |  |        |  |        |  |        |      |        |      |        |      |        |      |        |      |        |      |      |      |      |      |
| 19.5   | HR             |       |  |       |  |       |  |       |  |       |  |        |  |        |  | 6.4*   | 6.4* |        |      |        |      |        |      |        |      |        |      | 6.3* | 6.3* | 14.5 |      |
| 18.0   | HR             |       |  |       |  |       |  |       |  |       |  |        |  |        |  |        |      |        | 6.0* | 6.0*   |      |        |      |        |      |        |      | 6.0* | 6.0* | 15.9 |      |
| 16.5   | HR             |       |  |       |  |       |  |       |  |       |  |        |  |        |  |        |      |        | 6.0* | 6.0*   | 5.8* | 5.8*   |      |        |      |        |      | 5.8* | 5.8* | 17.0 |      |
| 15.0   | HR             |       |  |       |  |       |  |       |  |       |  |        |  |        |  |        |      |        | 6.0* | 6.0*   | 5.8* | 5.8*   |      |        |      |        |      | 5.6* | 5.6* | 17.9 |      |
| 13.5   | HR             |       |  |       |  |       |  |       |  |       |  |        |  |        |  |        | 6.4* | 6.4*   | 6.1* | 6.1*   | 5.8* | 5.8*   | 5.6* | 5.6*   |      |        |      | 5.6* | 5.6* | 18.7 |      |
| 12.0   | HR             |       |  |       |  |       |  |       |  |       |  |        |  |        |  |        | 6.6* | 6.6*   | 6.2* | 6.2*   | 5.9* | 5.9*   | 5.7* | 5.7*   |      |        |      | 5.5* | 5.5* | 19.3 |      |
| 10.5   | HR             |       |  |       |  |       |  |       |  |       |  |        |  |        |  |        |      |        | 7.5* | 7.5*   | 6.9* | 6.9*   | 6.4* | 6.4*   | 6.1* | 6.1*   | 5.8* | 5.8* | 5.5* | 5.5* | 19.7 |
| 9.0    | HR             |       |  |       |  |       |  |       |  |       |  |        |  |        |  |        |      |        |      |        | 8.9* | 8.9*   | 8.0* | 8.0*   | 7.2* | 7.2*   | 6.7* | 6.7* | 6.2* | 6.2* | 20.1 |
| 7.5    | HR             |       |  |       |  |       |  |       |  |       |  |        |  |        |  |        |      |        |      |        |      |        |      |        |      |        |      |      |      |      |      |
| 6.0    | HR             |       |  |       |  |       |  |       |  |       |  |        |  |        |  |        |      |        |      |        |      |        |      |        |      |        |      |      |      |      |      |
| 4.5    | HR             |       |  |       |  |       |  |       |  |       |  |        |  |        |  |        |      |        |      |        |      |        |      |        |      |        |      |      |      |      |      |
| 3.0    | HR             |       |  |       |  |       |  |       |  |       |  |        |  |        |  |        |      |        |      |        |      |        |      |        |      |        |      |      |      |      |      |
| 1.5    | HR             |       |  |       |  |       |  |       |  |       |  |        |  |        |  |        |      |        |      |        |      |        |      |        |      |        |      |      |      |      |      |
| 0      | HR             |       |  |       |  |       |  |       |  |       |  |        |  |        |  |        |      |        |      |        |      |        |      |        |      |        |      |      |      |      |      |
| -1.5   | HR             |       |  |       |  |       |  |       |  |       |  |        |  |        |  |        |      |        |      |        |      |        |      |        |      |        |      |      |      |      |      |
| -3.0   | HR             |       |  |       |  |       |  |       |  |       |  |        |  |        |  |        |      |        |      |        |      |        |      |        |      |        |      |      |      |      |      |
| -4.5   | HR             |       |  |       |  |       |  |       |  |       |  |        |  |        |  |        |      |        |      |        |      |        |      |        |      |        |      |      |      |      |      |
| -6.0   | HR             |       |  |       |  |       |  |       |  |       |  |        |  |        |  |        |      |        |      |        |      |        |      |        |      |        |      |      |      |      |      |
| -7.5   | HR             |       |  |       |  |       |  |       |  |       |  |        |  |        |  |        |      |        |      |        |      |        |      |        |      |        |      |      |      |      |      |

ER 954 C

## Industrial Stick 10.00 m (Variant 3C)

| ↕<br>m | Under-carriage | 3.0 m |  | 4.5 m |  | 6.0 m |  | 7.5 m |  | 9.0 m |  | 10.5 m |  | 12.0 m |  | 13.5 m |  | 15.0 m |  | 16.5 m |  | 18.0 m |  | 19.5 m |  | 21.0 m |  | m |  |  |  |
|--------|----------------|-------|--|-------|--|-------|--|-------|--|-------|--|--------|--|--------|--|--------|--|--------|--|--------|--|--------|--|--------|--|--------|--|---|--|--|--|
|        |                |       |  |       |  |       |  |       |  |       |  |        |  |        |  |        |  |        |  |        |  |        |  |        |  |        |  |   |  |  |  |
| 21.0   | HR             |       |  |       |  |       |  |       |  |       |  |        |  |        |  |        |  |        |  |        |  |        |  |        |  |        |  |   |  |  |  |
| 19.5   | HR             |       |  |       |  |       |  |       |  |       |  |        |  |        |  |        |  |        |  |        |  |        |  |        |  |        |  |   |  |  |  |
| 18.0   | HR             |       |  |       |  |       |  |       |  |       |  |        |  |        |  |        |  |        |  |        |  |        |  |        |  |        |  |   |  |  |  |
| 16.5   | HR             |       |  |       |  |       |  |       |  |       |  |        |  |        |  |        |  |        |  |        |  |        |  |        |  |        |  |   |  |  |  |
| 15.0   | HR             |       |  |       |  |       |  |       |  |       |  |        |  |        |  |        |  |        |  |        |  |        |  |        |  |        |  |   |  |  |  |
| 13.5   | HR             |       |  |       |  |       |  |       |  |       |  |        |  |        |  |        |  |        |  |        |  |        |  |        |  |        |  |   |  |  |  |
| 12.0   | HR             |       |  |       |  |       |  |       |  |       |  |        |  |        |  |        |  |        |  |        |  |        |  |        |  |        |  |   |  |  |  |
| 10.5   | HR             |       |  |       |  |       |  |       |  |       |  |        |  |        |  |        |  |        |  |        |  |        |  |        |  |        |  |   |  |  |  |
| 9.0    | HR             |       |  |       |  |       |  |       |  |       |  |        |  |        |  |        |  |        |  |        |  |        |  |        |  |        |  |   |  |  |  |
| 7.5    | HR             |       |  |       |  |       |  |       |  |       |  |        |  |        |  |        |  |        |  |        |  |        |  |        |  |        |  |   |  |  |  |
| 6.0    | HR             |       |  |       |  |       |  |       |  |       |  |        |  |        |  |        |  |        |  |        |  |        |  |        |  |        |  |   |  |  |  |
| 4.5    | HR             |       |  |       |  |       |  |       |  |       |  |        |  |        |  |        |  |        |  |        |  |        |  |        |  |        |  |   |  |  |  |
| 3.0    | HR             |       |  |       |  |       |  |       |  |       |  |        |  |        |  |        |  |        |  |        |  |        |  |        |  |        |  |   |  |  |  |
| 1.5    | HR             |       |  |       |  |       |  |       |  |       |  |        |  |        |  |        |  |        |  |        |  |        |  |        |  |        |  |   |  |  |  |
| 0      | HR             |       |  |       |  |       |  |       |  |       |  |        |  |        |  |        |  |        |  |        |  |        |  |        |  |        |  |   |  |  |  |
| -1.5   | HR             |       |  |       |  |       |  |       |  |       |  |        |  |        |  |        |  |        |  |        |  |        |  |        |  |        |  |   |  |  |  |
| -3.0   | HR             |       |  |       |  |       |  |       |  |       |  |        |  |        |  |        |  |        |  |        |  |        |  |        |  |        |  |   |  |  |  |
| -4.5   | HR             |       |  |       |  |       |  |       |  |       |  |        |  |        |  |        |  |        |  |        |  |        |  |        |  |        |  |   |  |  |  |
| -6.0   | HR             |       |  |       |  |       |  |       |  |       |  |        |  |        |  |        |  |        |  |        |  |        |  |        |  |        |  |   |  |  |  |
| -7.5   | HR             |       |  |       |  |       |  |       |  |       |  |        |  |        |  |        |  |        |  |        |  |        |  |        |  |        |  |   |  |  |  |

Height Can be slewed through 360° In longitudinal position of undercarriage Max. reach \* Limited by hydr. capacity

The lift capacities are stated in metric tonnes (t) on the lifting gear's stick tip, and can be lifted 360° on firm, level supporting surface. Capacities are valid for 750 mm track flat pads. Indicated loads are based on ISO 10567 standard and do not exceed 75 % of tipping or 87 % of hydraulic capacity (indicated via \*). Lifting capacity of the excavator is limited by machine stability, hydraulic capacity and maximum permissible load of the load hook.

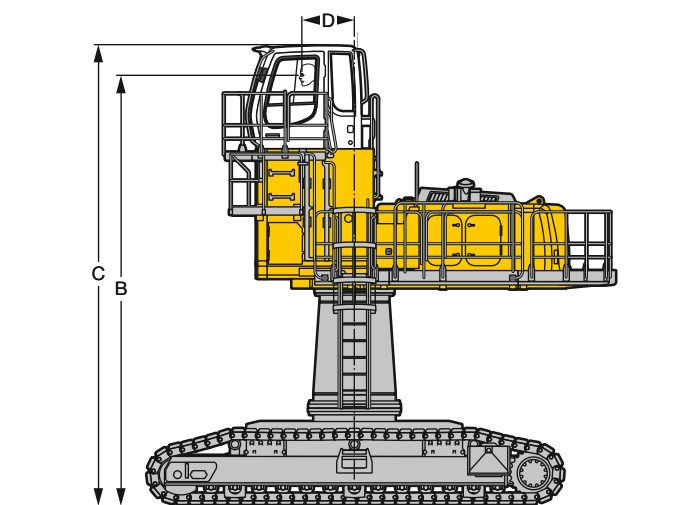
According to European Standard, EN 474-5: In the European Union excavators have to be equipped with an overload warning device, a load diagram and automatic safety check valves on hoist cylinders and stick cylinder(s), when they are used for lifting operations which require the use of lifting accessories.

# Choice of Cab Elevation and Cab Protection

ER 934 C

ER 944 C

ER 954 C

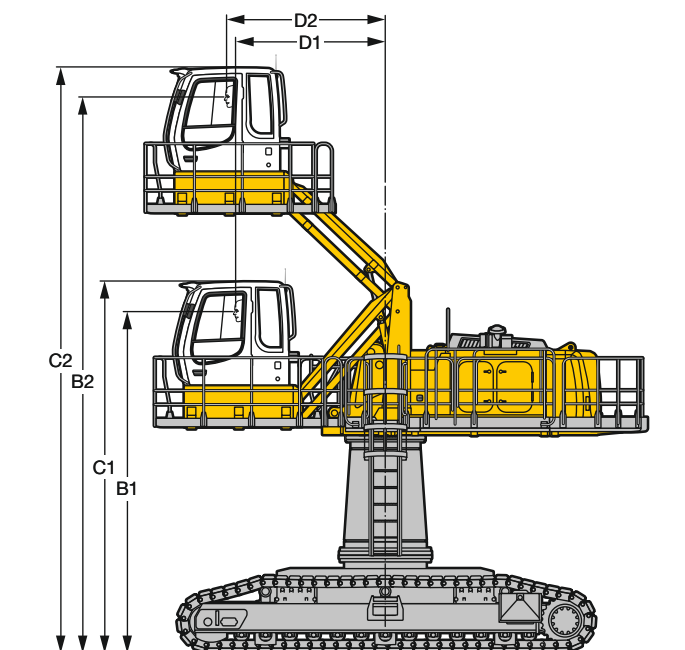


## Rigid Cab Elevation

|        | 934   | 944   | 954   | 934   | 944   | 954   |
|--------|-------|-------|-------|-------|-------|-------|
|        | mm    | mm    | mm    | mm    | mm    | mm    |
| Height | 1,200 | 1,200 | 1,200 | 2,000 | 2,000 | 2,000 |
| B      | 6,150 | 6,380 | 6,550 | 6,950 | 7,180 | 7,350 |
| C      | 6,700 | 6,890 | 7,060 | 7,500 | 7,690 | 7,860 |
| D      | 800   | 880   | 1,100 | 800   | 880   | 1,100 |

Additional weight with fixed cab elevation 2,000 mm in relation to cab elevation 1,200 mm:

934: 400 kg 944: 400 kg 954: 400 kg



## Hydraulic Cab Elevation (Parallelogram)

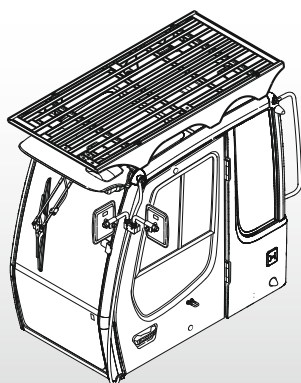
+ Intermediate Piece 0.5 m

|    | 934   | 944   | 954   |
|----|-------|-------|-------|
|    | mm    | mm    | mm    |
| B1 | 5,290 | 5,680 | 5,850 |
| B2 | 8,710 | 9,265 | 9,420 |
| C1 | 5,840 | 6,180 | 6,345 |
| C2 | 9,260 | 9,765 | 9,915 |
| D1 | 2,400 | 2,500 | 2,850 |
| D2 | 2,400 | 2,650 | 3,000 |

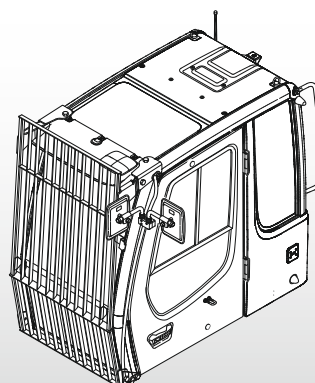
Additional weight in relation to cab elevation 1,200 mm:

934: 1,100 kg 944: 1,200 kg 954: 1,200 kg

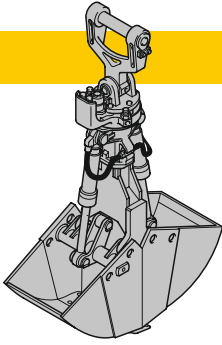
## FOPS Guard



## Front Guard



# Variety of Tools



## Shells for Loose Material

Shells for loose material with cutting edge (without teeth)

### Clamshell Model GM 20B

|                         |                |       |       |       |
|-------------------------|----------------|-------|-------|-------|
| Cutting width of shells | mm             | 1,000 | 1,200 | 1,600 |
| Capacity                | m <sup>3</sup> | 1.30  | 1.50  | 2.00  |
| Weight                  | kg             | 1,355 | 1,415 | 1,550 |

### Clamshell Model GM 22C

|                         |                |       |       |       |
|-------------------------|----------------|-------|-------|-------|
| Cutting width of shells | mm             | 1,500 | 1,500 | 2,000 |
| Capacity                | m <sup>3</sup> | 1.85  | 2.20  | 3.00  |
| Weight                  | kg             | 2,500 | 2,600 | 3,050 |

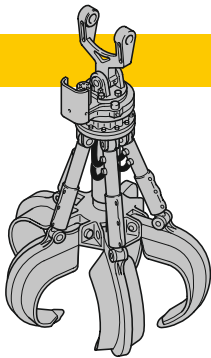
### Clamshell Model GMZ 50

|                         |                |       |  |  |
|-------------------------|----------------|-------|--|--|
| Cutting width of shells | mm             | 1,400 |  |  |
| Capacity                | m <sup>3</sup> | 3.50  |  |  |
| Weight                  | kg             | 2,670 |  |  |

ER 934 C

ER 944 C

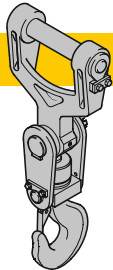
ER 954 C



## Multiple Tine Grapples

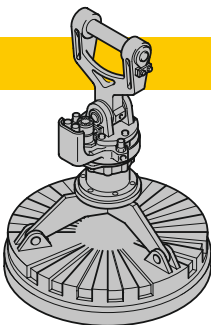
open tines      semi-closed tines      closed tines

|                |  | open tines              |       | semi-closed tines |       | closed tines |       |       |       |       |       |
|----------------|--|-------------------------|-------|-------------------|-------|--------------|-------|-------|-------|-------|-------|
| <b>934/944</b> | <b>Grapple Model GM 64</b><br>(4 tines)  | Capacity m <sup>3</sup> | 0.40  | 0.60              | 0.40  | 0.60         | 0.40  | 0.60  |       |       |       |
|                |  | Weight kg               | 845   | 1,130             | 1,055 | 1,330        | 1,060 | 1,520 |       |       |       |
|                | <b>Grapple Model GM 65</b><br>(5 tines)  | Capacity m <sup>3</sup> | 0.40  | 0.60              | 0.40  | 0.60         | 0.40  | 0.60  |       |       |       |
|                |  | Weight kg               | 1,150 | 1,230             | 1,285 | 1,415        | 1,325 | 1,520 |       |       |       |
| <b>954</b>     | <b>Grapple Model GM 69</b><br>(4 tines)  | Capacity m <sup>3</sup> | 0.80  | 1.10              | 0.80  | 1.10         | 0.80  | 1.10  |       |       |       |
|                |  | Weight kg               | 1,345 | 1,395             | 1,535 | 1,640        | 1,900 | 2,060 |       |       |       |
|                | <b>Grapple Model GM 70C</b><br>(5 tines) | Capacity m <sup>3</sup> | 0.80  | 1.10              | 0.80  | 1.10         | 0.80  | 1.10  |       |       |       |
|                |  | Weight kg               | 1,485 | 1,590             | 1,705 | 1,860        | 1,950 | 1,995 |       |       |       |
| <b>954</b>     | <b>Grapple Model GMM 80</b><br>(4 tines) | Capacity m <sup>3</sup> | 1.10  | 1.40              | 1.70  | 1.10         | 1.40  | 1.70  | –     | –     | –     |
|                |  | Weight kg               | 1,950 | 1,990             | 2,050 | 2,130        | 2,195 | 2,250 | –     | –     | –     |
|                | <b>Grapple Model GMM 80</b><br>(5 tines) | Capacity m <sup>3</sup> | 1.10  | 1.40              | 1.70  | 1.10         | 1.40  | 1.70  | 1.10  | 1.40  | 1.70  |
|                |  | Weight kg               | 2,190 | 2,240             | 2,310 | 2,400        | 2,480 | 2,550 | 2,550 | 2,600 | 2,720 |



## Crane Hook with Suspension

|           |    |      |     |
|-----------|----|------|-----|
| Max. load | t  | 12.5 | 32  |
| Weight    | kg | 96   | 180 |



## Electro Magnets with Suspension

Magnet information on request

# Equipment



## Uppercarriage

|   |   |
|---|---|
| Complete tool set   | • |
| Engine hood with pneumatic damping and mechanical stop            | • |
| Handrails, non-slip surfaces                                      | • |
| Junction box with shutdown  | • |
| Lockable tool box   | • |
| Maintenance-free swing brake lock, integrated in the transmission | • |
| Sound insulation  | • |
| Wide walkways and handrails                                       | • |
| Extension of security system for access to the machine            | + |
| Frequency of 60 Hz  | + |
| Pedal controlled positioning swing brake                          | + |
| Special painting  | + |
| Voltage other than 400 V  | + |



## Hydraulics

|  |   |
|--|---|
| Electronic regulation by power limit   | • |
| Filter with integrated fine filter area (5 µm)   | • |
| Measuring points for hydraulic circuit pressure  | • |
| Minimum flow at high pressure  | • |
| Operating mode selector with continuous regulation                                     | • |
| Pressure accumulator for controlled lowering of attachments with the engine turned off | • |
| Shut-off valve between hydraulic tank and pumps  | • |
| Filling with bio-degradable oil  | + |
| Filter for secondary circuit   | + |
| Liebherr Tool Control  | + |
| Supplementary hydraulic circuits   | + |



## Operator's Cab

|   |   |
|---|---|
| Automatic climate control with defrosting function                                      | • |
| Cab front roof  | • |
| Cigar lighter and ashtray   | • |
| Closed storage space  | • |
| Coat hook   | • |
| Emergency exit through rear window  | • |
| Floor mat   | • |
| Interior lighting   | • |
| Interior rear-view mirror   | • |
| Multi-function display  | • |
| Operating hours display, visible from the outside                                       | • |
| Panoramic tinted windows  | • |
| Pocket storage space  | • |
| Radio pre-equipment   | • |
| Right-hand window without central mounting  | • |
| Roof window and windshield in laminated glass   | • |
| Seat adjusted independently or in association with the console (6 adjustment positions) | • |
| Seat belt   | • |
| Sliding window in door  | • |
| Sun blind   | • |
| Windshield wipers and windshield wash   | • |
| Additional spotlights on cab roof (front/rear)  | + |
| Armored windshield (not movable)  | + |
| Electric cool box   | + |
| Extinguishers   | + |
| Extra supply heating  | + |
| Radio unit  | + |
| Seat with pneumatic suspension, headrest and heating                                    | + |
| Stone impact protection (FOPS)  | + |
| Warning beacon  | + |
| Wipers for front lower window   | + |
| Wipers for roof window  | + |



## Attachment

|  |   |
|--|---|
| Cylinders with end of run damper   | • |
| Hydraulic connections for quick coupling system                            | • |
| Hydraulic lines for supply to clamshell/grapple in stick                   | • |
| Liebherr semi-automatic centralised lubrication                            | • |
| Operating spotlights   | • |
| Safety device to prevent hose rupture (lifting cylinder) with regeneration | • |
| Safety device to prevent hose rupture (stick cylinder) with regeneration   | • |
| Sealed pivots and bearings   | • |
| Liebherr automatic centralised lubrication                                 | + |
| Liebherr range of clamshells/grapples                                      | + |
| Lifting hook   | + |
| Overload warning   | + |
| Special painting   | + |

• = Standard, + = Option

**Options and/or special attachments, supplied by vendors other than Liebherr, are only to be installed with the knowledge and approval of Liebherr in order to retain warranty.**

### Liebherr-France SAS

2 avenue Joseph Rey, B.P. 90287, FR-68005 Colmar Cedex

☎ +33 389 21 3030, Fax +33 389 21 3793

www.liebherr.com, E-Mail: info.lfr@liebherr.com

www.facebook.com/LiebherrConstruction