

**MINI, COMPACT, MID-SIZE**

**Takeuchi**  
*From World First to World Leader*

# Excavators





# Compact Excavators



## Hydraulic Performance

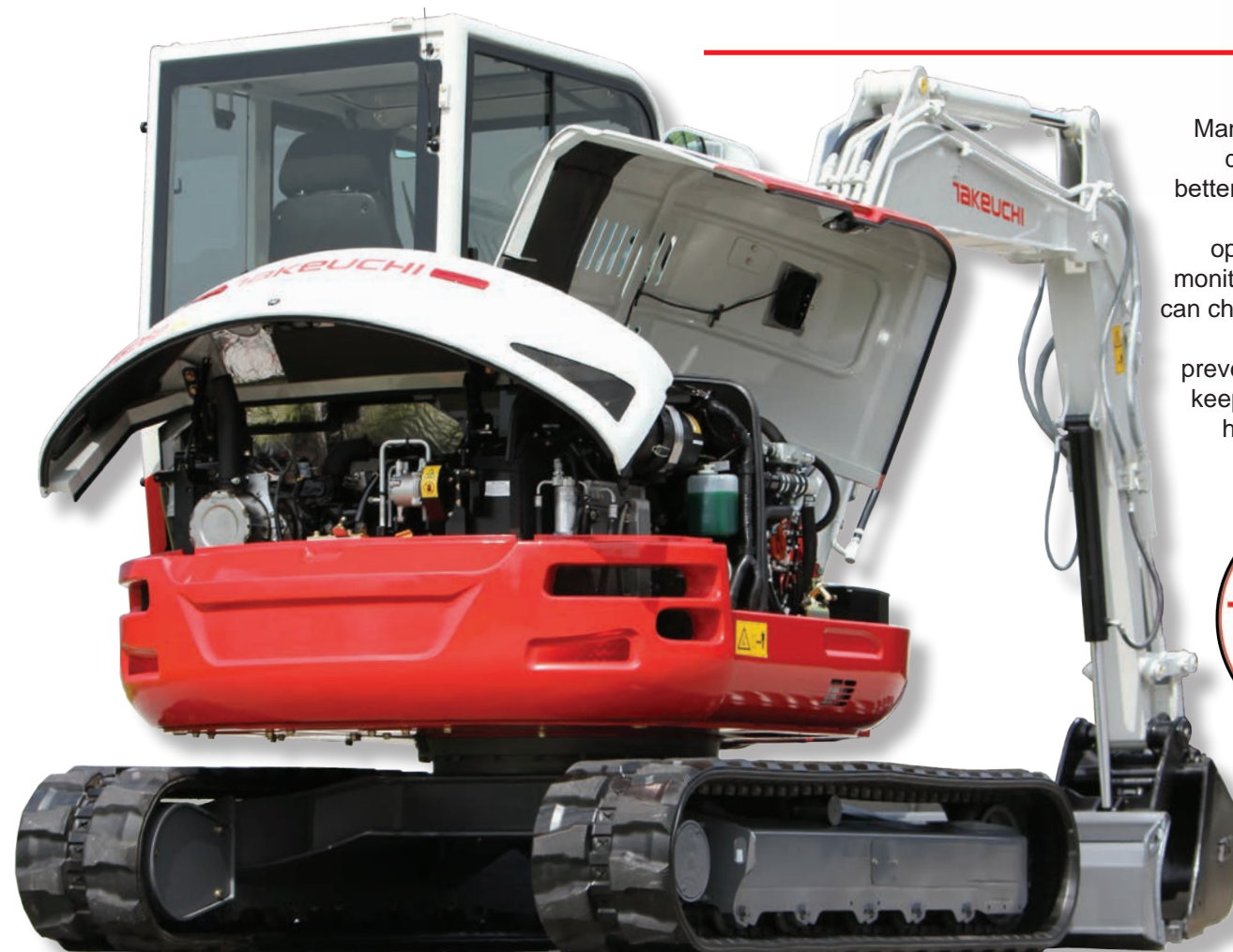
High capacity cooling modules and large steel hydraulic tanks deliver excellent efficiency and cooling performance in our 200 Series excavators. Our TB230, TB235-2 and TB240 feature primary auxiliary circuits plumbed to mid-arm and the larger TB260 and TB290 include both primary and secondary auxiliary circuits as standard equipment. All feature a one-way and two-way selector valve for greater attachment versatility.

## Enhanced Serviceability

The 200 Series excavators from Takeuchi feature ground level access to all key daily inspection points: engine oil fill, engine oil dipstick, hydraulic oil sight gauge, fuel fill, fuel water separator, air cleaner, battery, and grease points. Both the engine and side hoods open overhead making it easier to inspect and maintain the machine, and they are lockable for greater protection. Access to the fuel fill points are through a lockable door and there is a sight gauge for added convenience.

## TFM

Takeuchi Fleet Management (TFM) is designed to help better manage a fleet and lower overall operating costs. By monitoring a machine you can check the health of your equipment and prevent costly repairs by keeping track of alerts, hours, and more.



## Comfort and Convenience

Upon entering a 200 Series Takeuchi excavator one of the first things the operator will notice is the open and spacious operator's station. Takeuchi prides itself on having one of the largest cabins in the industry and this directly translates to a comfortable and more productive operator. The interiors are well appointed and feature multi-informational displays that provide the operator with machine vitals and condition.



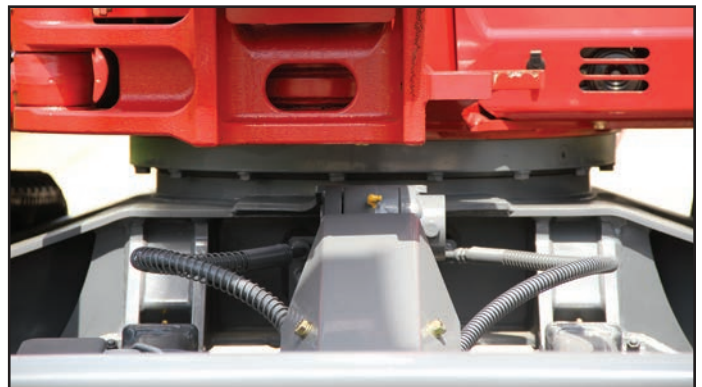
## Durable and Dependable

From the ground up, Takeuchi engineers their excavators to be rugged and dependable. Takeuchi's commitment to quality is apparent with their steel construction, large hinge points on the hoods, precision welds, and large pins and bushings. Cushioned cylinders on the boom and swing extends the life of components.



## Tough and Functional

Connecting the upper structure to the lower frame on Takeuchi excavators is a large ring gear that provides greater stability and durability. With sloped frames and open centers, Takeuchi excavators are able to shed dirt and debris encountered on the job site. All 200 Series excavators feature automatic load sensing two speed travel that will step down to high torque mode when encountering a load for greater productivity. Triple flange track rollers are standard equipment and reduce the likelihood of de-tracking when working in demanding applications.





# Mid-Size Excavators



## Powerful and Versatile

The TB2150 is the largest and most powerful excavator in the Takeuchi lineup. The TB2150 is unique in that it features a heavy-duty backfill blade and boom swing allowing it to function much like other Takeuchi excavators. With the boom swing function the TB2150 is able to dig offset over both the left and right-hand track making an ideal machine for a wide range of applications, while the blade provides stability, backfilling, and site prep capabilities.

## Comfort and Peace of Mind

Designed for the operator, the TB2150 maximizes comfort and functionality. The TB2150 includes an automotive styled interior, deluxe high back heated air suspension seat, 7" color multi-function display, rear view camera, and backlit rocker switches. Low effort pilot joystick controls, LED work lights, boom and arm holding valves and overload alarm.



## Big on Performance

The TB290 has a broad feature set that maximize the performance and productivity of this powerful excavator. It features a closed center, load sensing hydraulic system making it an excellent attachment platform that can perform multi-function operations and utilize a wide range of hydraulically driven attachments for greater versatility. For greater convenience, the color monitor has a number of attachment presets and auxiliary flow rates that can be adjusted quickly from the comfort of the operator's seat.

The standard heavy duty dozer blade features integrated gusset reinforcements for superior strength and durability, and comes with large anchor points to easily secure the machine for transport.

## TB280FR

The work equipment on the TB280FR includes a long arm with primary and secondary auxiliary circuits plumbed to mid arm providing the operator with greater functionality and exceptional working ranges. The TB280FR features high flow on the primary auxiliary circuit, which delivers up to 39 gpm. A 5.7" color multi-informational display has multiple presets for hydraulic attachments and auxiliary flow rates can be adjusted from the comfort of the operator's seat.



## Ease of Maintenance

Performing maintenance on the TB280FR is relatively easy. Access to key daily inspection points like fuel fill, air cleaner, engine oil fill, engine oil dipstick, hydraulic oil sight gauge, and battery can be performed from ground level. The cab can tilt forward should the control valve or back side of the engine need to be accessed.

## Unmatched Capability

Enhancing the performance of the TB280FR is a patented Side-to-Side (STS) boom. This boom configuration enables the operator to have an unimpeded view of the job site when digging offset, but it can also be stowed to allow the cab to make a full rotation almost entirely within the width of the tracks. This is an outstanding feature for job sites with space limitations.



# Specifications & Dimensions

OPERATING PERFORMANCE	TB210R	TB216	TB216H	TB230	
Operating Weight - Canopy	2,370 lb (1,075 kg)	3,902 (1,770 kg)	4,277 lb (1,940 kg)	6,360 lb (2,885 kg)	7,200 lb (3,266 kg)
Operating Weight - Cab (Rubber)	N/A	N/A	N/A	N/A	7,600 lb (3,448 kg)
Maximum Bucket Breakout Force	2,518 lb (1,142kg)	4,250 lb (1,928 kg)	4,250 lb (1,928 kg)	6,471 lb (2,935 kg)	9,000 lb (4,082 kg)
Maximum Arm Digging Force	1,439 lb (653 kg)	1,843 lb (836 kg)	1,843 lb (836 kg)	2,900 lb (1,325 kg)	3,800 lb (1,723 kg)
Arm Length	2 ft 10.6 in (880 mm)	3 ft 8.5 in (1,130 mm)	3 ft 8.5 in (1,130 mm)	4 ft 9.0 in (1,445 mm)	4 ft 10.0 in (1,472 mm)
Slew Speed	10.0 rpm	9.2 rpm	9.2 rpm	10.3 rpm	11.0 rpm
Traction Force	2,878 lb (1,305 kg)	4,361 lb (1,978 kg)	4,361 lb (1,978 kg)	6,340 lb (2,876 kg)	7,200 lb (3,266 kg)
Ground Pressure - Canopy	4.1 psi (28.3 kPa)	4.3 psi (29.6 kPa)	4.6 psi (32.2 kPa)	4.3 psi (29.4 kPa)	4.6 psi (32.2 kPa)
Ground Pressure - Cab (Rubber)	N/A	N/A	N/A	N/A	4.6 psi (32.2 kPa)
Travel Speed - Low	1.2 mph (2.0 km/hr)	1.4 mph (2.2 km/hr)	1.4 mph (2.2 km/hr)	1.8 mph (2.9 km/hr)	1.7 mph (2.7 km/hr)
Travel Speed - High	2.3 mph (3.7 km/hr)	2.6 mph (4.2 km/hr)	2.6 mph (4.2 km/hr)	3.2 mph (5.2 km/hr)	2.6 mph (4.2 km/hr)
HYDRAULIC SYSTEM					
Total Hydraulic Flow	5.9 gal/min (22.2 L/min)	13.4 gal/min (50.9 L/min)	13.4 gal/min (50.9 L/min)	24.2 gpm (91.6 L/min)	28.6 gpm (108.5 L/min)
Auxiliary Flow - Primary Circuit	5.9 gal/min (22.2 L/min)	8.9 gal/min (33.6 L/min)	8.9 gal/min (33.6 L/min)	13.4 gpm (50.6 L/min)	15.0 gpm (56.8 L/min)
Auxiliary Flow - 2nd Circuit	N/A	N/A	N/A	N/A	N/A
Hydraulic System Pressure	2,680 psi (18.2 Mpa)	3,046 psi (21.0 Mpa)	3,046 psi (21.0 Mpa)	3,046 psi (21.0 Mpa)	3,500 psi (24.1 Mpa)
ENGINE					
Make / Model	Kubota / D722-E4B	Yanmar / 3TNV74	Yanmar / 3TNV74	Yanmar / 3TNV88F	Yanmar / 3TNV88F
Horsepower	11.7 hp (8.7 kW)	15.0 hp (11.2 kW)	14.9 hp (11.1 kW)	24.4 hp (18.2 kW)	24.4 hp (18.2 kW)
Maximum Torque	26.4 ft-lb (35.8 Nm)	38.2 ft-lb (51.8 Nm)	38.2 ft-lb (51.8 Nm)	63.0 ft-lb (85.3 Nm)	68.0 ft-lb (92.5 Nm)
Output Electric Motor	N/A	N/A	14.2 hp (10.6 kW)	N/A	N/A
Electrical Connection	N/A	N/A	400-480 V/47 - 63 Hz/ Fused w/ min 32A	N/A	N/A
FLUID CAPACITIES					
Engine Lubrication	3.0 qt (2.8 L)	4.5 qt (4.3 L)	4.5 qt (4.3 L)	5.0 qt (4.7 L)	5.0 qt (4.7 L)
Fuel Tank Capacity	3.3 gal (12.4 L)	5.8 gal (22.0 L)	5.8 gal (22.0 L)	12.2 gal (46.0 L)	12.2 gal (46.0 L)
Hydraulic Reservoir Capacity	2.3 gal (9.0 L)	4.2 gal (16.0 L)	4.2 gal (16.0 L)	9.2 gal (35.0 L)	9.2 gal (35.0 L)
Hydraulic System Capacity	4.0 gal (15.0 L)	6.5 gal (24.5 L)	6.5 gal (24.5 L)	14.8 gal (56.0 L)	14.8 gal (56.0 L)
MACHINE DIMENSIONS					
Maximum Reach	10 ft 9.4 in (3,285 mm)	13 ft 5.0 in (4,090 mm)	13 ft 5.0 in (4,090 mm)	15 ft 10.9 in (4,850 mm)	17 ft 0.0 in (5,181 mm)
Maximum Dig Height	9 ft 9.5 in (2,985 mm)	12 ft 3.2 in (3,740 mm)	12 ft 3.2 in (3,740 mm)	14 ft 8.8 in (4,490 mm)	16 ft 0.0 in (4,877 mm)
Maximum Dump Height	6 ft 11.5 in (2,120 mm)	8 ft 10.5 in (2,705 mm)	8 ft 10.5 in (2,705 mm)	10 ft 7.2 in (3,230 mm)	11 ft 0.0 in (3,353 mm)
Maximum Dig Depth	5 ft 9.1 in (1,755 mm)	7 ft 10.0 in (2,390 mm)	7 ft 10.0 in (2,390 mm)	9 ft 3.6 in (2,835 mm)	10 ft 0.0 in (3,048 mm)
Maximum Vertical Dig Depth	4 ft 10.0 in (1,475 mm)	6 ft 9.1 in (2,060 mm)	6 ft 9.1 in (2,060 mm)	7 ft 1.2 in (2,165 mm)	8 ft 0.0 in (2,438 mm)
Front Swing Radius	4 ft 4.0 in (1,320 mm)	4 ft 10.3 in (1,480 mm)	4 ft 10.3 in (1,480 mm)	6 ft 2.7 in (1,895 mm)	6 ft 0.0 in (1,829 mm)
Front Swing Radius w/ Boom Offset	3 ft 2.5 in (980 mm)	3 ft 9.4 in (1,155 mm)	3 ft 9.4 in (1,155 mm)	4 ft 11.2 in (1,505 mm)	5 ft 0.0 in (1,524 mm)
Tail Swing Radius	2 ft 0.0 in (610 mm)	3 ft 6.3 in (1,075 mm)	4 ft 4.6 in (1,335 mm)	4 ft 4.4 in (1,330 mm)	4 ft 0.0 in (1,219 mm)
Transport Height	7 ft 2.6 in (2,200 mm)	7 ft 5.8 in (2,280 mm)	7 ft 4.8 in (2,255 mm)	8 ft 3.9 in (2,540 mm)	8 ft 0.0 in (2,438 mm)
Transport Length	9 ft 8.3 in (2,955 mm)	12 ft 8.3 in (3,870 mm)	13 ft 6.8 in (4,135 mm)	15 ft 0.9 in (4,595 mm)	16 ft 0.0 in (4,877 mm)
Ground Clearance	6.2 in (157 mm)	8.1 in (205 mm)	8.1 in (205 mm)	11.9 in (305 mm)	11.9 in (305 mm)
Undercarriage Length	4 ft 4.2 in (1,325 mm)	4 ft 11.9 in (1,520 mm)	4 ft 11.9 in (1,520 mm)	6 ft 2.9 in (1,900 mm)	6 ft 0.0 in (1,829 mm)
Undercarriage Width	29.5 in (750 mm)	38.6 in (980 mm)	38.6 in (980 mm)	4 ft 9.0 in (1,450 mm)	5 ft 0.0 in (1,524 mm)
	*40.2 (1,020 mm)	*51.2 in (1,300 mm)	*51.2 in (1,300 mm)		

**takeuchi**

# sions

TB235-2	TB240	TB260	TB290	TB280FR	TB2150
253 lb (3,365 kg)	8,570 lb (3,890 kg)	12,125 lb (5,500 kg)	N/A	N/A	N/A
539 lb (3,465 kg)	8,990 lb (4,080 kg)	12,645 lb (5,735 kg)	18,630 lb (8,450 kg)	18,810 lb (8,530 kg)	34,480 lb (15,640 kg)
1,127 lb (4,140 kg)	9,959 lb (4,517 kg)	12,756 lb (5,786 kg)	16,565 lb (7,514 kg)	16,335 lb (7,409 kg)	22,190 lb (10,065 kg)
1,389 lb (1,764 kg)	4,110 lb (1,864 kg)	5,755 lb (2,610 kg)	8,161 lb (3,702 kg)	7,037 lb (3,192 kg)	12,557 lb (5,696 kg)
9.0 in (1,445 mm)	5 ft 3.0 in (1,600 mm)	5 ft 10.1 (1,780 mm)	7 ft 0.0 in (2,130 mm)	6 ft 7.0 in (2,000 mm)	8 ft 5.0 in (2,570 kg)
9.3 rpm	9.6 rpm	9.4 rpm	10.3 rpm	10.0 rpm	10.8 rpm
291 lb (3,307 kg)	9,533 lb (4,324 kg)	14,006 lb (6,353 kg)	19,780 lb (8,972 kg)	19,783 lb (8,973 kg)	32,600 lb (14,786 kg)
4 psi (30.4 kPa)	4.4 psi (30.2 kPa)	4.4 psi (30.2 kPa)	N/A	N/A	N/A
6 psi (31.5 kPa)	4.6 psi (31.6 kPa)	4.6 psi (31.5 kPa)	5.5 psi (37.9 kPa)	5.5 psi (38.1 kPa)	6.9 psi (47.7 kPa)
7 mph (2.8 km/hr)	1.8 mph (2.9 km/hr)	1.7 mph (2.8 km/hr)	1.6 mph (2.6 km/hr)	1.7 mph (2.7 km/hr)	1.9 mph (3.1 km/hr)
8 mph (4.2 km/hr)	3.3 mph (5.3 km/hr)	3.0 mph (4.9 km/hr)	3.1 mph (5.0 km/hr)	3.2 mph (5.2 km/hr)	3.4 mph (5.5 km/hr)
5 gpm (108.4 Lpm)	30.6 gpm (115.8 L/min)	45.3 gpm (171.5 L/min)	62.5 gpm (236.6 L/min)	52.5 gpm (198.0 L/min)	78.9 gpm (293.0 L/min)
8 gpm (60.0 Lpm)	17.1 gpm (64.9 L/min)	27.0 gpm (102.2 L/min)	26.4 gpm (100.0 L/min)	39.0 gpm (148.0 L/min)	59.0 gpm (224.0 L/min)
N/A	N/A	11.6 gpm (43.9 L/min)	14.5 gpm (55.0 L/min)	15.0 gpm (58.0 L/min)	14.5 gpm (55.0 L/min)
53 psi (24.5 Mpa)	3,481 psi (24.0 Mpa)	3,480 psi (24.0 Mpa)	3,990 psi (27.5 Mpa)	3,990 psi (27.5 Mpa)	4,977 psi (34.3 Mpa)
Yanmar / 3TNV88F	Yanmar / 4TNV88C	Yanmar / 4TNV86CT	Yanmar / 4TNV98CT	Yanmar / 4TNV98CT	Deutz/TCD3.6L4 Turbo
44 hp (18.2 kW)	35.8 hp (26.7 kW)	47.6 hp (35.5 kW)	69.2 hp (51.6 kW)	69.2 hp (51.6 kW)	114.0 hp (85.0 kW)
8 ft-lb (92.2 Nm)	102.6 ft-lb (139.1 Nm)	130.5 ft-lb (177.0 Nm)	227.2 ft-lb (308.0 Nm)	227.2 ft-lb (308.0 Nm)	339.3 ft-lb (460.0 Nm)
N/A	N/A	N/A	N/A	N/A	N/A
N/A	N/A	N/A	N/A	N/A	N/A
5.0 qt (4.7 L)	7.8 qt (7.4 L)	7.8 qt (7.4 L)	10.8 qt (10.2 L)	9.9 qt (9.4 L)	10.6 qt (10.0 L)
2.2 gal (46.0 L)	18.5 qt (70.0 L)	21.3 gal (81.0 L)	33.8 gal (128.0 L)	26.3 gal (100.0 L)	73.4 gal (278.0 L)
0.2 gal (35.0 L)	10.8 gal (70.0 L)	12.9 gal (49.0 L)	19.3 gal (73.0 L)	18.7 gal (71.0 L)	28.1 gal (107.0 L)
8.0 gal (68.0 L)	19.5 gal (74.0 L)	23.8 gal (90.0 L)	37.0 gal (140.0 L)	31.7 gal (120.0 L)	42.3 gal (160.0 L)
2.9 in (5,255 mm)	18 ft 2.3 in (5,545 mm)	20 ft 6.9 in (6,270 mm)	24 ft 5.0 in (7,435 mm)	23 ft 7.2 in (7,195 mm)	28 ft 8.8 in (8,760 mm)
5.2 in (5,010 mm)	17 ft 2.5 in (5,244 mm)	19 ft 5.9 in (5,940 mm)	23 ft 11.1 in (7,290)	21 ft 2.0 in (6,465 mm)	28 ft 5.0 in (8,670 mm)
9.5 in (3,595 mm)	12 ft 6.6 in (3,825 mm)	13 ft 10.1 in (4,220 mm)	17 ft 3.0 in (5,260 mm)	14 ft 8.4 in (4,480 mm)	20 ft 6.0 in (6,250 mm)
7.8 in (3,245 mm)	11 ft 4.4 in (3,465 mm)	12 ft 9.4 in (3,895 mm)	15 ft 0.0 in (4,580 mm)	14 ft 11.0 in (4,540 mm)	17 ft 10.4 (5,445 mm)
2.2 in (2,495 mm)	8 ft 8.9 in (2,665 mm)	9 ft 9.3 in (2,980 mm)	12 ft 6.4 in (3,820 mm)	11 ft 5.5 in (3,495 mm)	15 ft 1.3 in (4,605 mm)
6.9 in (2,005 mm)	6 ft 8.3 in (2,040 mm)	7 ft 11.3 in (2,420 mm)	8 ft 2.0 in (2,495 mm)	9 ft 5.4 in (2,880 mm)	9 ft 11.0 (3,015 mm)
5.4 in (1,660 mm)	5 ft 3.8 in (1,620 mm)	6 ft 5.8 in (1,975 mm)	6 ft 8.0 in (2,030 mm)	5 ft 3.5 (1,610 mm)	7 ft 10.0 in (2,405 mm)
4.4 in (1,330 mm)	4 ft 5.7 in (1,365 mm)	4 ft 3.1 in (1,300 mm)	5 ft 5.0 in (1,650 mm)	4 ft 2.4 in (1,280 mm)	6 ft 6.7 in (2,000 mm)
2.8 in (2,510 mm)	8 ft 2.6 in (2,505 mm)	8 ft 5.4 in (2,575 mm)	8 ft 5.0 in (2,545 mm)	8 ft 11.4 in (2,725 mm)	9 ft 8.5 in (2,960 mm)
0.9 in (4,900 mm)	16 ft 8.2 in (5,020 mm)	18 ft 2.5 in (5,550 mm)	21 ft 10.0 (6,660 mm)	20 ft 7.4 in (6,285 mm)	25 ft 7.3 in (7,805 mm)
11.6 (295 mm)	11.6 in (295 mm)	13.1 in (330 mm)	1 ft 3.0 in (385 mm)	1 ft 0.3 in (315 mm)	1 ft 7.0 in (475 mm)
11.1 in (2,110 mm)	6 ft 11.0 in (2,110 mm)	8 ft 5.3 in (2,573 mm)	9 ft 4.0 in (2,855 mm)	9 ft 4.0 in (2,855 mm)	11 ft 10. in (3,615 mm)
2.2 in (1,580 mm)	5 ft 8.5 in (1,740 mm)	6 ft 6.7 in (2,000 mm)	7 ft 3.0 in (2,210 mm)	7 ft 7.0 in (2,300 mm)	8 ft 2.0 in (2,490 mm)

# Mini Excavators

**TB210R, TB216, TB216H**

Takeuchi offers three mini excavators that are ideal for applications that require a machine with the ability to perform and maneuver in areas with limited access and space. The TB210 has an operating weight of 2,370 lbs and dig depth of 5 ft 9.1 in. While the TB216 is available in two different configurations diesel and diesel/electric hybrid. The standard TB216 features an operating weight of 3,902 lbs, and the diesel / electric hybrid has an operating weight of 4,277 lbs. Working range and performance are the same in either configuration.

## Excellent Protection

Protecting your equipment from damage is critical. The counterweight wraps around the rear and side of Takeuchi excavators protecting vital engine and hydraulic components from damage while also providing excellent stability when operating.



## Greater Accessibility

The TB210, TB216, and TB216H feature retractable undercarriages that allow them to enter job sites with limited accessibility. The TB210 is capable of passing through a standard doorway with its undercarriage fully retracted and the operator can expand the undercarriage for greater stability while working.



## Precision Control

All Takeuchi excavators feature pilot operated controls. These controls serve as an extension of the operator and deliver excellent response, precision, and comfort. For added convenience, a pattern change valve is also standard equipment allowing the operator to choose their preferred operational pattern, (ISO/SAE).



## TB216H Hybrid

The TB216H is a dual powered excavator featuring a diesel engine and electric motor. The operator can use the diesel engine to power the excavator on/off a trailer, as well as, to the job site. Engaging the electric motor is as simple as turning the switch on and cycling the key off/on. For ease of operation, all machine controls are the same for diesel or electric mode.

