



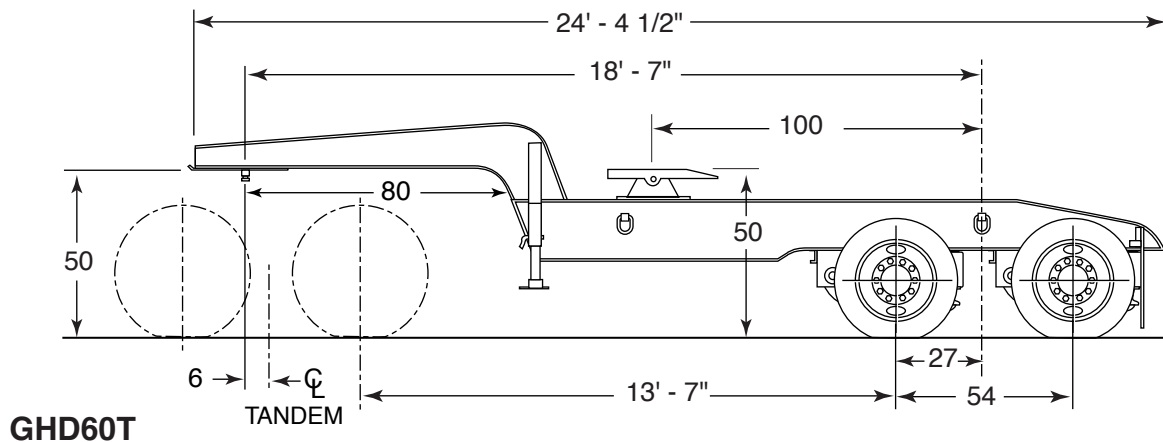
S-GHD60-16

October 2016

SPECIFICATIONS

60 ton JEEP DOLLY

ETNYRE TANDEM AXLE JEEP DOLLY - 60 TON



Capacity: Proportionate share of up to 60 tons
Minimum trailer gooseneck clearance radius - 168"
50" Tractor loaded 5th wheel height
80" Gooseneck clearance radius
Telescopic drop legs
50" Sliding 5th wheel height (loaded)
66" Sliding 5th wheel
Ridewell air suspension
Over-ride chains on both axles
Manual exhaust valve for air suspension
8'-0" (96") wide
Tires - 255/70R 22.5 (H) 16 PR tubeless radials
Wheels - 8.25 x 22.5 single piece steel disc (white)

Hubs - Hub piloted with outboard drums
Axles - 22,500 # (5/8" wall thickness) with oil bearings
Brakes - 16 1/2" x 7" full air
Spring brakes - one (1) axle (rear axle)
Anti-Lock brakes - None
Automatic slack adjusters
Mast for cable and hoses
Jumper cable and hoses
Lighting - L.E.D. type - rubber mounted - mid turn signal
Finish - shot blast / epoxy primer / urethane finish
Air lines - glad hands
Electrical - 7 way receptacle and plug
Lash rings - 4 at balance point
Mud flaps
Red and white conspicuity markings