



CBI Root Rake

Excavator Attachment

Features

- Six rake teeth into three thumb teeth for raking out root structure and screening material with strength and precision
- Large throat and tine-to-tine opening allows for loading large volumes of debris
- Six back-rake tines allow for backfill raking
- Massive reinforced tines for raking and screening the toughest roots and loading the most gnarled stumps
- Raking material helps to remove dirt and rock, reducing grinder wear and providing cleaner end product
- Designed for 65,000- 90,000 lb. class excavator with auxiliary hydraulic line for the additional piston
- Each unit custom manufactured to fit your exact excavator specifications

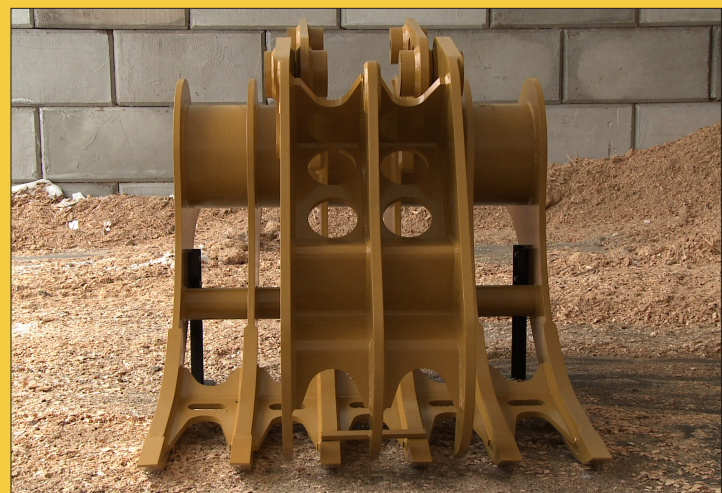
Description

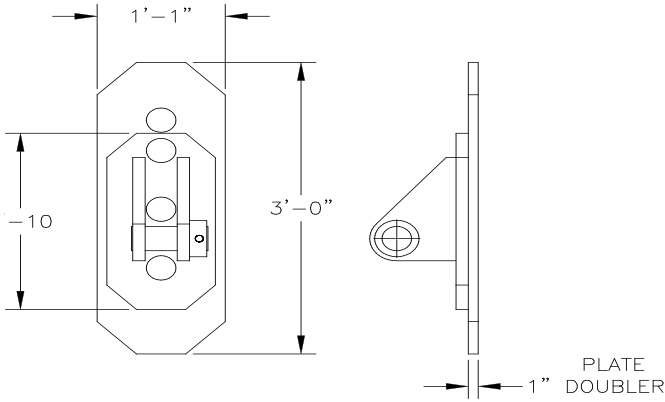
CBI's Root Rake grubs, pulls, backfills, rakes and loads... making "hog feed" out of dirt contaminated debris. Six massive primary rake tines clear root structure from the ground with ease, while the six secondary reinforced steel back-rake tines groom the surface area on the reverse stroke. The extra wide rake opening allows for grabbing large amounts of material and using the rake to screen roots and stumps prior to loading. This helps to remove most dirt and rocks, which greatly reduces wear and tear on your grinder as well as allowing stumps and roots to be ground to a cleaner and much higher quality fuel product. Raked and screened material also drastically increases grinder production.

CBI's RR30 Root Rake weighs 7,500 lbs. and fits on a 65,000-90,000 lb. class excavator; The dual action rake uses the bucket curl function of the excavator to power the lower jaw, allowing screening of material and raking roots to have the same operator feel as digging with a standard bucket. An auxiliary cylinder powers the grapple.

In ground or out, the CBI Root Rake is built with the same rugged durability you have come to expect from CBI. Every component—from the specially designed rake tines, to the large diameter high strength alloy pins, to the fixed Hardox 450 tips designed for feeding a grinder—are painstakingly designed and crafted from the finest materials to give you maximum performance and the longest useful life in this demanding application. Don't waste precious time and hard-earned money on less capable, less durable contraptions. CBI's Root Rake is custom configured to always outperform and outlast all others in the toughest severe duty applications.

Model RR30





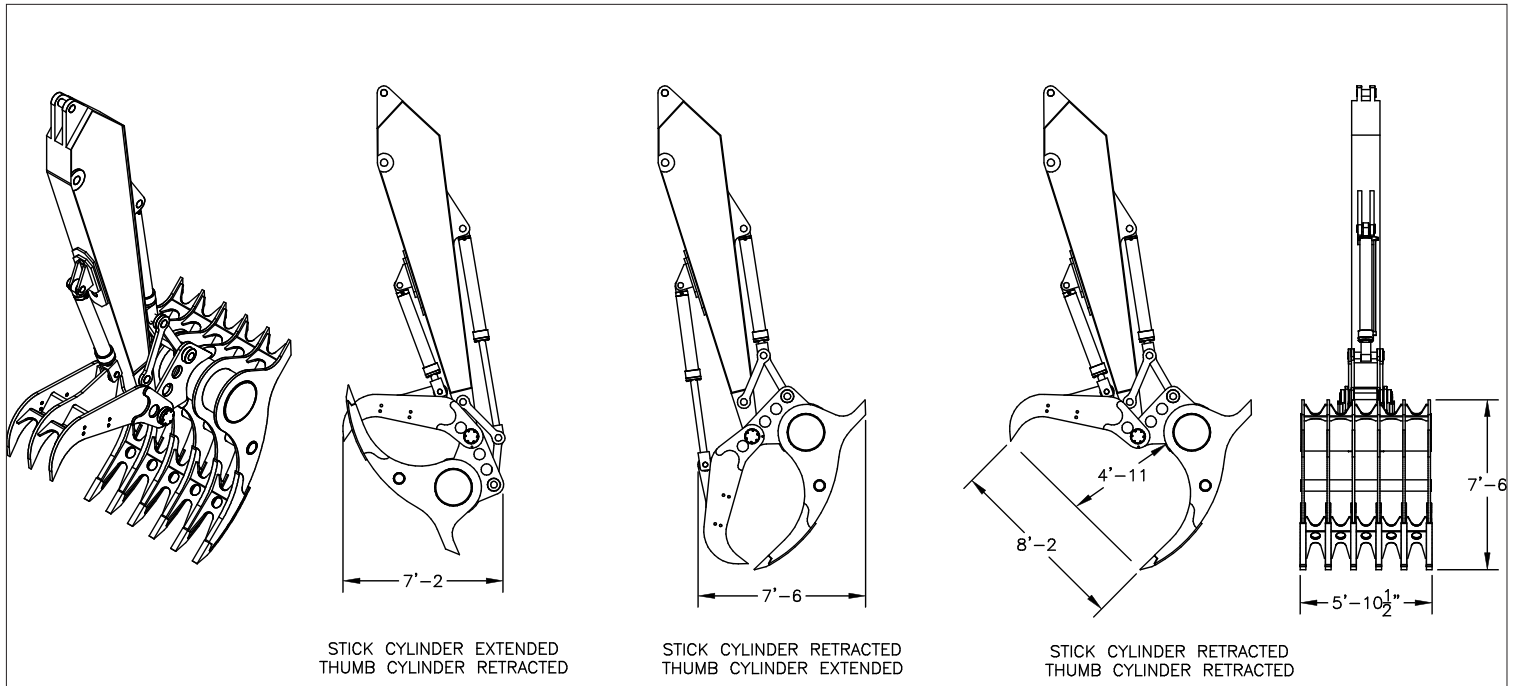
THUMB CLYINDER CLEVIS
TO BE WELDED TO EXCAVATOR

Hydraulics

The CBI supplied cylinder requires a hydraulic system capable of delivering 45-60 gpm at a 3500-5000 psi operating pressure. The ports use SAE-12 O-rings and are both located at the barrel end of the cylinder. The cylinder has a bolted rod head construction and has an operating psi of 5000 psi. (Clevis bracket and cylinder supplied by CBI.)

Specifications

Rake Model	Rake Weight (lb)	Excavator Weight Class (lb)	Max. Jaw Opening (approx.)	Throat Depth	Tine Configuration	Hydraulic Cylinder 5000 psi		
						Bore	Stroke	Rod
RR30	7500	65-90.000	74"	65"	3 into 6	6"	48"	4"



The CBI difference: Fuel the Future.™

Continental Biomass Industries, Inc.

World's Best Stationary and Portable Material Recovery Systems

22 Whittier Street, Newton, NH 03858

Phone: 603-382-0556 Fax: 603-382-0557

Web: cbi-inc.com Email: info@cbi-inc.com

Distributed by: