



# CP130

COMMERCIAL CLASS PAVER



## CP130

Engine	130hp (97kW) Cummins Tier IVf
Std. Width	8'-15' (2.43-4.59m)
Max Width	17' (5.18m)
Weight	22,500 lbs (10206kg)

# OVERVIEW

**We don't follow trends. We set them.** The CP130 from Carlson does just that. Combining the material throughput of an 8-foot highway-class paver in a compact, maneuverable package, the 130 horsepower (97kW) Cummins®-powered CP130 redefines what a commercial paver can be while providing contractors a heavy duty, reliable and highly versatile platform.

From mid-sized commercial projects to city and county roadwork, the CP130 excels across a wide array of jobsites and projects, achieving leading mat quality and production. The CP130 is able to do so with its all-new EZCSS 8'-15' screed, class-leading material throughput, and a fully rebuildable platform with replaceable auger flights, bolt-on replaceable floor plates and a one piece steel frame for longer machine lifecycle. Along with its intuitive operator stations that feature armrest controls for enhanced comfort and leading visibility, the CP130 is truly in a class of its own.

## Highway-Class Build And Performance In A Commercial-Class Paver Platform







# CP130



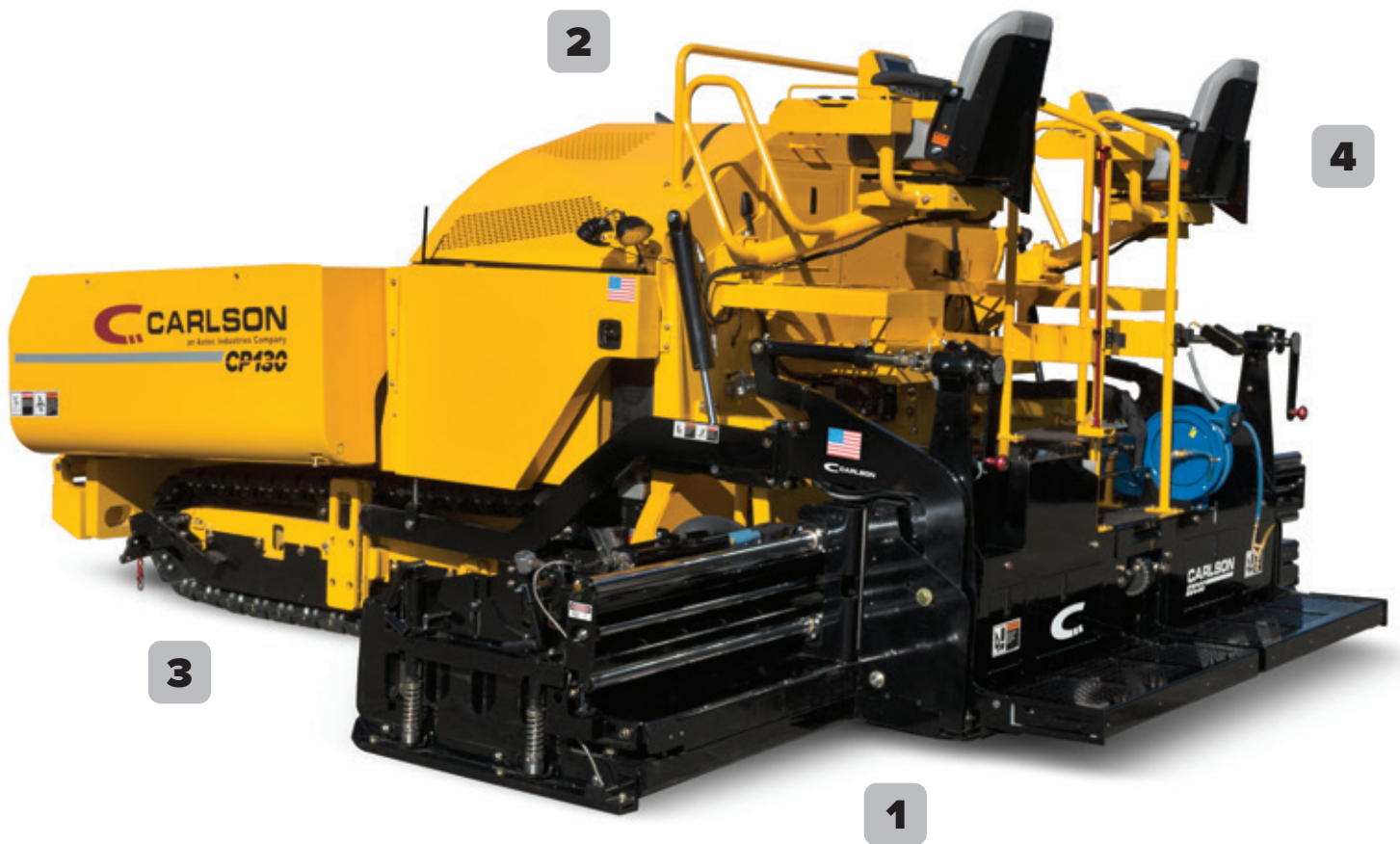
**Unmatched Performance** with its powerful, high torque Cummins® QSF3.8 Tier IV Final engine, one piece heavy-duty frame, highway-class wear components and a fully rebuildable, long lasting platform.

**Unequaled Contractor Focus** with its dual control stations with intuitive armrest controls able to pivot outwards 45°, best-in-class visibility, and the most standard crew comfort features in its class.

**Unparalleled Mat Quality** with the class-leading EZCSS electrically heated screed, featuring over 30 years of award winning mat quality and performance of Carlson's highway-class front-mount platforms in a commercial class package.

# FEATURES & BENEFITS

Manufactured to outlast and outperform, the CP130 pushes the boundary of what “commercial-class” means. Combining the heaviest duty components with leading performance, the CP130 has no equal in lifecycle, reliability and performance within its class.



## 1 Heavy-Duty Steel Frame

For the CP130, it all starts with the frame. Constructed of cold-rolled steel, the CP130's single piece frame provides contractors with a longer lasting, higher quality chassis, making it the most robust platform in its class. And since all the paver's wear components and add-ons are bolted to the frame, the CP130 is able to be fully rebuilt around the heavy-duty frame for even longer service life.



## 2 Power And Performance

Proven reliability, high torque and impressive power are delivered from the 130 horsepower (97kW) Cummins® QSF3.8 Tier IV Final turbocharged engine, coupled with closed loop hydraulics and the commercial-class' largest planetary drives. With class-leading torque and superior undercarriage, the CP130 is able to effortlessly push highway-class asphalt trailers and conquer any day's job.

Maintenance on and around the engine is made accessible with Carlson's leading engine compartment layout. With a one piece, forward tilting hood, largest side doors in its class, and front access panel in the hopper, service to the CP130's engine, hydraulics and electrical can be done quickly and comfortably for greater productivity and less machine downtime.

## 3 Track System

Comprising of 7 bogeys, return idler, the largest drive sprockets in its class and 14" (355mm) wide poly-pad tracks that provide exceptional lifecycle and performance, the CP130's track system gives contractors a robust, heavy-duty system that excels across a wide variety of bases and materials. Hydraulically self-tensioning, the paver's track system also comes standard with rock guards, giving the already robust platform added protection.

## 4 Dual Control Stations

Designed around the operator to maximize comfort, organization and visibility, the CP130 comes standard with dual control stations enabling full control of the paver from either side. The class-exclusive armrest controls feature intuitively organized switch functions, electric over hydraulic steering levers, and 7" (178mm) touch screen display. Because the controls are to the side of the operator, the CP130 enables class-leading visibility around the paver, enhanced further with the ability to pivot each control station 45° outwards.



*The layout of the engine, hydraulics and electrical, along with its forward-tilting hood and large side doors, make service and maintenance easy and accessible.*

*The intuitively organized controls provides simple operation of the platform from both sides, while leading visibility to the augers and screed allow for close monitoring of material flow and head of material.*



# MATERIAL DISTRIBUTION

Among commercial-class paver platforms, there is no rival to the CP130's heavy-duty, highway-class material distribution system and material throughput. Combining robust reliability with industry leading features, the CP130's material distribution system elevates paving performance, reduces replacement costs and simplifies end of day clean-up times.



**Highway-Class Components  
For Leading Performance**

## Hopper And Conveyors

Featuring chains and slats 25% stronger than competitive pavers, the largest conveyor sprockets in their class, and easily accessible conveyor tension adjustment points, the CP130's conveyor system represents the commercial-class' most reliable and heavy-duty system for efficient material distribution. The conveyor system is combined with a hopper capacity of 9.5 tons and increased conveyor speeds for class-leading material throughput and production. Even the hopper wings are the most robust in their class, constructed of ½" (13mm) steel and requiring no external support like competitive machines, while the heavy-duty lift cylinders provide the superior lift angles for efficient material flow.

Clean up of the hopper and conveyors is drastically reduced by the system's design and accessibility. With it's between the tracks design that drastically reduces material carry over and flip up front apron for wash down of the conveyor chains and sprockets, the CP130 gives contractors a longer lasting platform combined with unrivaled ease of clean up.





## Heavy-Duty Floor Plates

Like all Carlson commercial-class pavers, the CP130 utilizes 3/8" (9.5mm) heavy-duty, 450 Brinell-rated hardened steel floor plates for longer lifecycle and better performance. These class-leading floor plates are fully replaceable, enabling contractors to rebuild their machine for even longer machine lifecycle and greater return on investment.

## Auger Flights And Bearings

The CP130's fully replaceable 13" (330mm) 500 Brinell-rated steel auger flights provide best-in-class material flow towards the endgates while also ensuring leading component lifecycle. Held in place by the heaviest duty, fully sealed bearing in its class, the CP130's augers are truly highway-class for superior material throughput and lower maintenance costs.

## Horizontal Sliding Damper Doors

A Carlson exclusive feature, the horizontal sliding damper doors on the CP130 keep obstructions, such as utility boxes, from damaging them while open. Able to be infinitely adjusted from fully open to closed, contractors are able to utilize the doors' tunnel effect for wider width paving or for narrow width applications, such as utility cuts. The horizontally sliding doors also prevent material from falling when traveling across the jobsite to the next pull.

## Automation And Sonics

The CP130 is prewired as standard to accept grade and slope automation systems, including those sold by MOBA®, Topcon® and TF Technologies®. No matter the contractor's preferred system, the CP130 is able to pair with any grade and slope automation system for superior results.



Only one commercial paver line carries the industry's leading screeds that bear the Carlson name: Carlson's CP-class paver platforms. And with the all-new EZCSS single slide screed, commercial contractors have a true Carlson highway-class platform in a commercial-class package for unmatched mat quality and unparalleled paving performance.



## Award Winning Highway-Class Mat Quality In A Commercial-Class Screed

### Highway-Class Features

Just like its highway-class screeds, renowned for their award-winning mat quality, the EZCSS shares many similarities to Carlson's larger platforms. Standard with state-of-the-art electric heating elements for clean, even heat across the main and extension plates, the EZCSS also incorporates with each element a full length hold down for better heat transfer to the plate. Add in the spring loaded heated endgates, innovative screed deck cone system for easy leveling, power extension height adjustment, power slope for up to 9% extension slope capability, and manual crown adjustments, and the EZCSS has the most standard screed features in its class for superior ride uniformity and mat quality.

### Screed Plates

Built with the Carlson class exclusive 2% taper, a feature that improves outboard flow of material regardless if the augers are on, the EZCSS screed utilizes a 16" (406mm) deep main screed plate and 8" (203mm) deep extension plates. Each plate is made of 3/8" (9.5mm) 450 Brinell-rated hardened steel, giving contractors leading plate lifecycle and unparalleled mat quality. The EZCSS also has class leading adjustable pre-strike offs tightly fitted to the main, a feature that allows little to no damage to occur when obstructions are bumped or hit due to poor elevation.



## Options For Customization

Contractors are able to add enhanced versatility and customizability to their EZCSS screed through an array of class-leading attachments and functions. Able to be added anytime, contractors can tailor their screed to the demands and requirements of any job including:

- The Carlson Safety Edge endgate produces seamless, extruded 30° mat edges for safer roadway re-entry and eliminates the need for hand tamping. Standard with heat, the Carlson Safety Edge is able to be adjusted from 30° to joint matching with its integrated, externally mounted jack.
- The 12" and 18" Integral Berm option enables contractors to construct a seamless 4" outside edge rise berm curb through quick manual adjustments.
- Power functions can be easily added to the EZCSS to provide greater versatility and enhanced paving performance. These functions include Power Crown for 3" (76mm) crown to 1" (25mm) invert, Power Slope for up to 9% extension slope capability, Power Extension Height for quick adjustment on the fly, and Extension Vibration.

# EZCSS



## Extensions

Like its industry-leading highway-class screeds, the EZCSS commercial screed features Carlson's exclusive single slide extension support system that drastically reduces component replacement costs and achieves exceptional extension rigidity. The 1.5" diameter chrome rods provide fluid inboard and outboard motion while the heavy duty tubular frame the rods are fixed to bears the weight and forces on the extensions.

Along with the only adjustable slide block bushings in its class, on-the-fly angle of attack adjustment, and half the wear components of competitive platforms, the EZCSS's extension support system represents a watershed moment for commercial class mat quality and reliability.



# OPTIONS & SPECS



**Customized To Fit  
Contractor Needs**

Representing the new standard for included features that enhance operator comfort, paving performance and mat quality, the CP130 is able to be customized further to the needs of any contractor. From wide pave attachments to grade and slope automation systems, the CP130 can be ordered with the options or added at any time.



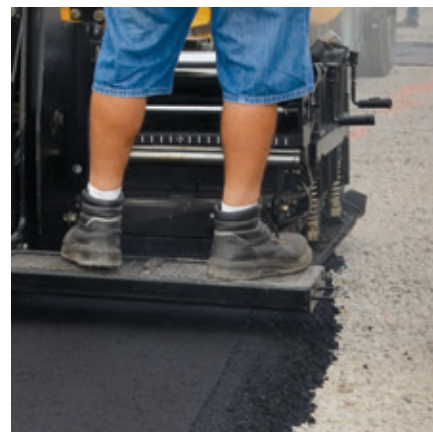
## PERFORMANCE

- High Output Light Package
- Truck Hitch
- 12" Bolt-on Auger Extensions
- Tunnel Kit
- Auger/Conveyor Reverse
- Depth Crank Indicator Kit
- MOBA®
- TOPCON®
- TF Technologies®



## CONTRACTOR FOCUS

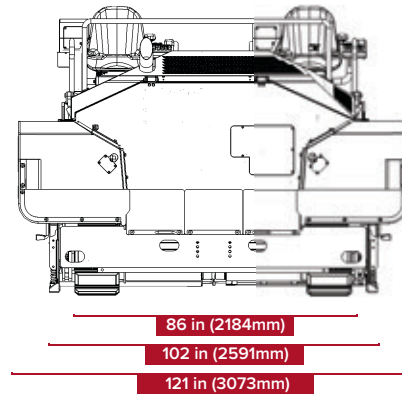
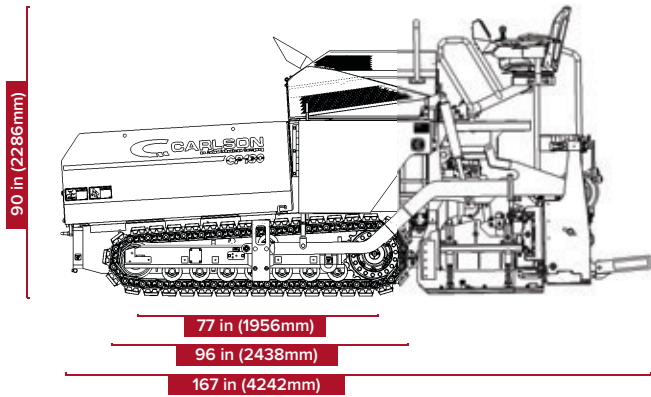
- Umbrella
- Beacon Light
- Slide Out Walkway Extensions
- 2nd Washdown Hose Reel
- Citrus Washdown Tank
- 12v Aux. Charger Kit
- Auxiliary Light Mount
- Spanish Decal Kit
- Choice of Depth Crank Thread



## MAT QUALITY

- Heated Endgate Kit
- Cut Off Shoes
- 12" Heated Bolt-on Extensions
- Carlson Safety Edge
- Integral Berm (12" or 18")
- Power Extension Height
- Power Slope
- Power Crown
- Extension Vibration





### DIMENSIONS

Total Weight	22,500 lb (10206kg)
Tractor Weight	18,500 lb (8391kg)
Screed Weight	4,000 lb (1814kg)
Hopper Capacity	9.5 Tons (8.6 tonnes)
Hopper Inside Width Opening	10 ft (3048mm)
Hopper Dump Clearance	21.25 in (540mm)
Load Angles	15° Forward/15° Reverse

### ENGINE

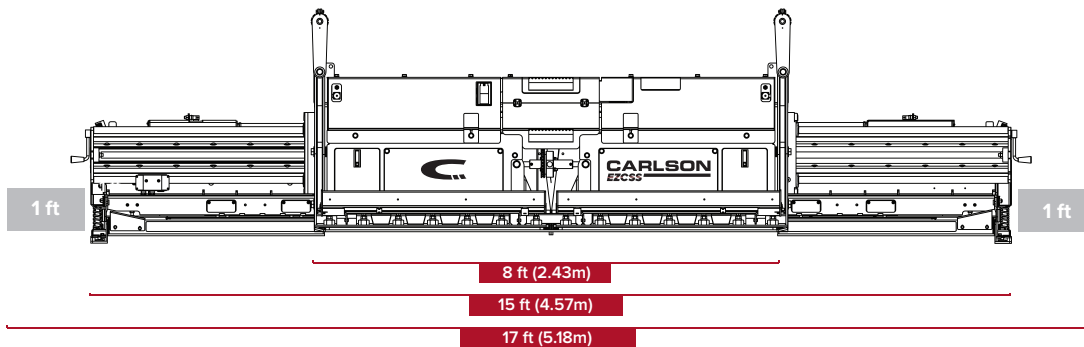
Engine	130hp (97kW) Cummins QSF 3.8
EPA/EU Emissions Standard	Tier IV Final/EU Stage IV
Drive System	2 Speed Planetary
Track Type	14 in (356mm) Poly-Pad
Max Pave Speed	155 fpm (47.2m/min)
Max. Travel Speed	325 fpm (99m/min)
Max. Reverse Speed	325 fpm (99m/min)

### COMPONENTS

Floor Plate Thickness	3/8 in (9.5mm) 500 Brinell-rated
Conveyor Width	25.5 in (648mm)
Conveyor Speed	58 rpm
Damper Doors	Dual Horizontally Sliding
Auger Diameter	13 in (330mm)
Auger Flight Thickness	7/8 in (22mm) 500 Brinell-rated
Max. Auger Speed	160 rpm

### CAPACITIES

Fuel Tank	32 gal (121L)
DEF Tank	5 gal (19L)
Hydraulic Tank	22 gal (83.3L)
Cooling System Capacity	7 gal (26.5L)
Washdown Tank	6 gal (22.7L)
Electrical System	12v w/ 80 amp Alternator
Generator	14.4kW Belt Driven



### EZCSS SCREED

Standard Paving Width	8 ft-15 ft (2.43-4.59m)
Max. Paving Width	17 ft (5.18m)
Paving Depth (Min/Max)	.25-8 in (6mm-203mm)
Main Plate Depth	16 in (406mm) Center 14 in (356mm) Edge
Main Plate Thickness	3/8 in (9.5mm) 450 Brinell Rated
Extension Plate Depth	8 in (203mm)
Extension Plate Thickness	3/8 in (9.5mm) 450 Brinell Rated

Screed Heat Source	Electric Heating Elements
Endgates	Spring Loaded
Crown Adjustment	Manual Crown
Crown/Invert	3 in (76mm) / 1 in (25mm)
Extension Height Adjustment	Power Extension Height
Extension Height Travel	1.75 in (44.45mm)
Power Slope Adjustment	9% Down
Vibration	0-3000 vpm

01-1019

# CP130



**CARLSONPAVINGPRODUCTS.COM**

MOBA is a registered trademark of MOBA Mobile Automation AG. TOPCON is a registered trademark of Topcon Corporation. TF TECHNOLOGIES and MINI-LINE are registered trademarks of TF Technologies A/S.

CUMMINS is a registered trademark of Cummins, Inc.

Featured machines in photography may include additional equipment for special applications, optional equipment, and prototype machines.

Continually improving our products, materials and specifications are subject to change without notice. © 2018 Carlson Paving Products, Inc. All Rights Reserved.

**CARLSON PAVING PRODUCTS, INC.** an Astec Industries Company  
18425 50th AVENUE EAST • TACOMA, WA 98446 USA • PH 800.216.2108 • [carlsonpavingproducts.com](http://carlsonpavingproducts.com)

