



# Mid Atlantic

## Rental Equipment



Clean, well maintained equipment | New models | Wide selection | Variety of attachments

[www.GTMidAtlantic.com](http://www.GTMidAtlantic.com)





## Rent from GT Mid Atlantic

### Select your equipment and your timeframe

- Wide range of reliable machines in excellent condition
- Expand capabilities with attachments
- Short term and long term rental available
- Rent-to-own options are available

### Services

- Continuing education in industry technology
- CNH revolving account for parts, services, rental and accessory purchases
- Extended warranties
- Foam filled tires
- Hydraulic hose assemblies
- Laser and machine control system repair center
- Machine inspection maintenance
- Oil and wear analysis
- Online parts catalog
- On-site field service



## Table of Contents

### Construction Equipment

Compact Track Loaders	3
Skid Steer Loaders	3
Loader Backhoes	3
Excavators	4
Crawler Dozers	4
Wheel Loaders	5
Crawler Carriers	5
Articulated Trucks	5



### Roadbuilding Equipment

Cold Planers/Asphalt Milling Machines	6
Material Transfer Vehicles	6
Pavers	6
Road Wideners	6
Sweepers	6
Asphalt Rollers	7
Soil Compaction	7



### Crushing/Recycling Equipment

Trommel Screens	7
Incline Screens	7
Scalping Screens	7
Crushers	8
Conveyors	8
Soil Stabilizers/Road Reclaimers	8
Grinders	8



### Attachments

Breakers	9
MSD Shears	9
HDR Grapples	10
Mobile Demolition Grapples	10
Mobile Demolition Processors	10
Universal Processors	10
Stump Shears	11
Concrete Pulverizers	11
Screw Log Splitter	11
Mobile Hydraulic Pulverizers	11



Rental Terms & Conditions	12
---------------------------	----

# Construction Equipment

## Compact Track Loaders



Model	Horsepower	Operating Load	Breakout Force
TR270	68 HP	2,700 lb	7,200 lb
TR310	68 HP	3,100 lb	8,680 lb
TR340	84 HP	3,400 lb	8,700 lb
TV370	68 HP	3,700 lb	8,776 lb
TV450	84 HP	4,500 lb	9,188 lb
TL8	74 HP	3,000 lb	6,856 lb
TL10V2	74 HP	3,600 lb	6,520 lb
TL12V2	111 HP	4,107 lb	7,874 lb

## Skid Steer Loaders



Model	Net Horsepower	Operating Load	Tipping Load
SR160	57 HP	1,600 lb	3,200 lb
SR175	64 HP	1,750 lb	3,500 lb
SV185	57 HP	1,850 lb	3,700 lb
SR210	68 HP	2,100 lb	4,200 lb
SR240	68 HP	2,400 lb	4,800 lb
SR270	84 HP	2,700 lb	5,400 lb
SV280	68 HP	2,800 lb	5,600 lb
SV340	84 HP	3,400 lb	6,800 lb
TS80R2	74 HP	7,950 lb	5,650 lb
TS80V2	74 HP	8,965 lb	7,000 lb

## Loader Backhoes



Model	Max Dig Depth
580 Extendahoe	18' 3"
580 w/ IT Front	18' 3"
590	19' 7½"



# Construction Equipment

## Excavators



Model	Weight	Dig Depth
<b>COMPACT EXCAVATORS</b>		
CX17/TB210R	4,000 lb	7' 3" – 5' 9"
CX26C/TB216	5,000 lb	7' 11" – 7' 10"
CX33C/TB230	7,000 lb	9' 3.6" – 9' 11"
CX37C/TB240	8,000 lb	10' 3" – 11' 4.4"
CX50C/TB260	12,000 lb	12' 9.4"
CX57C/TB260	12,000 lb	12' 9.4"
CX60C	13,500 lb	11' 9"
<b>STANDARD EXCAVATORS</b>		
CX80 or TB280 or 290	18,000 lb	13' 9" – 15'
CX130/CX145	30,000 lb	18' 8" – 20'
CX160	38,000 lb	19' 11"
CX160 <i>Mechanical thumb</i>	38,000 lb	19' 11"
CX160 <i>Hydraulic thumb</i>	38,000 lb	19' 11"
CX210/CX245	47,000 lb	21' 10"
CX250	55,000 lb	22' 8"
CX250LR	63,500 lb	47' 9"
CX300	65,500 lb	23' 4"
CX300 <i>Mechanical thumb</i>	65,500 lb	23' 4"
CX300 <i>Hydraulic thumb</i>	65,500 lb	23' 4"
CX350	80,000 lb	24' 1"
CX350LR	88,000 lb	46' 3"
CX490	108,000 lb	25' 4"
R920	48,280 lb	18' 8"
R926	64,705 lb	20' 5"
R936	85,209 lb	23' 2"
<b>WHEELED EXCAVATORS</b>		
A914	33,000 lb	16' 2"
<b>MATERIAL HANDLERS</b>		
LH22 M	48,300 lb	—
LH22 C Industry	48,900 lb	—
LH30 M	64,200 lb	—
LH30 C Industry	66,600 lb	—
LH40 M	85,300 lb	—
LH40 C Industry	95,900 lb	—
LH50 M	90,200 lb	—
LH50 M High Rise	103,400 lb	—
LH50 C High Rise Industry	121,000 lb	—
LH60 M	134,500 lb	—
LH60 M High Rise	160,100 lb	—
LH60 C Industry	136,700 lb	—
LH60C High Rise Industry	167,100 lb	—

## Crawler Dozers\*



Model	Gross Horsepower	Weight	Description
650	68 HP	16,091 lb	104" Str., 96" Angled
750	90 HP	17,284 lb	104" Str., 96" Angled
850	112 HP	17,519 lb	104" Str., 89" Angled
850 <i>winch</i>	112 HP	—	Allied H4A Winch
1150	127 HP	25,300 lb	110" Str., 102" Angled
1150 <i>winch</i>	127 HP	—	Allied H5C Winch
1650	150 HP	39,550 lb	130" PAT blade
2050	214 HP	48,773 lb	135" PAT blade
2050 <i>winch</i>	214 HP	—	Allied H6H Winch
PR716	126 HP	33,510 lb	3.06 yd <sup>3</sup> – 4.07 yd <sup>3</sup> (blade capacity)
PR726	163 HP	36,590 lb	126" 6-way blade
PR736	204 HP	44,750 lb	178" Str., 145" Semi U

\*Integrated Grade Control (IGC) – Pricing Available Upon Request  
Models available may vary by location



# Construction Equipment

## Wheel Loaders



Model	Horsepower	Operating Weight	Bucket Capacity
-------	------------	------------------	-----------------

### FULL SIZE WHEEL LOADERS

521	131 HP	24,035 lb	2.00 yd <sup>3</sup>
621	162 HP	27,903 lb	2.75 yd <sup>3</sup>
721	179 HP	32,492 lb	3.50 yd <sup>3</sup>
821	205 HP	40,057 lb	4.50 yd <sup>3</sup>
921	225 HP	45,071 lb	4.75 yd <sup>3</sup>
1021	296 HP	55,282 lb	5.50 yd <sup>3</sup>
1121	320 HP	61,650 lb	6.25 yd <sup>3</sup>
L546	167 HP	31,967 lb	3.7 yd <sup>3</sup>
L556	228 HP	40,785 lb	4.7 yd <sup>3</sup>
L566	272 HP	51,145 lb	5.5 yd <sup>3</sup>

### COMPACT WHEEL LOADERS

21F XT	58 HP	10,979 lb	.92 yd <sup>3</sup>
21F	58 HP	11,272 lb	.92 yd <sup>3</sup>
121F XT	64 HP	11,067 lb	1.05 yd <sup>3</sup>
121F	64 HP	11,618 lb	1.05 yd <sup>3</sup>
221F	74 HP	12,547 lb	1.20 yd <sup>3</sup>
321F	74 HP	13,303 lb	1.30 yd <sup>3</sup>

Models available may vary by location

## Crawler Carriers



Model	Horsepower	Operating Weight	Carrying Capacity
-------	------------	------------------	-------------------

RT6	155 HP	17,880 lb	12,000 lb
RT9	225 HP	26,180 lb	18,000 lb
RT14	310 HP	34,260 lb	28,000 lb
RT14R	320 HP	42,220 lb	28,000 lb

## Articulated Trucks



Capacity	Horsepower	Metric Tons
----------	------------	-------------

30 Ton	370 HP	30.9
40 Ton	444 HP	41.9



# Roadbuilding Equipment



## Cold Planers/Asphalt Milling Machines



Model	Engine Power	Max Cutting Width	Max Cutting Depth
RX-300e	320 HP	47.25"	12"
RX-600e	675 HP	86"	13"
RX-600eIr	675 HP	86"	13"
RX-700e	800 HP	126"	13"
RX-900e	1,050 HP	150"	14"

## Material Transfer Vehicles



Model	Engine Power
MTV-1100e	250 HP
MTV-1105e	250 HP
SB-1500e	300 HP
SB-2500e	300 HP

## Pavers



Model	Engine Power	Operating Width
RP-170e	174 HP	8' – 15'
RP-175e	174 HP	8' – 15'
RP-190e/ex	230 HP	10' – 26'
RP-195e/ex	230 HP	10' – 26'
SP-200e/ex	230 HP	10' – 26'

## Road Wideners



Model	Width	Max Width	Transport
SPR-6	1' – 6'	6'	Non Permit
SPD-8	1' – 8'	8'	Permit
SPF-8	1' – 8'	8'	Non Permit

## Sweepers



Model	Engine Power	Operating Weight
DT74J	74 HP	5,300 lb
DT74C	74 HP	5,300 lb
DT74P	74 HP	5,300 lb
SM74J	74 HP	6,500 lb
SM74C	74 HP	6,500 lb
SM74P	74 HP	6,500 lb



# Roadbuilding Equipment



## Asphalt Rollers



Model	Engine Power	Drum Size
SW354	24 HP	47"
SW354W	24 HP	51"
SW504	43 HP	51"
SW504W	43 HP	54"
SW654	73 HP	58"
SW654 ND	73 HP	58"
SW774	110 HP	67"
SW774ND	110 HP	67"
SW884	130 HP	79"
SW884ND	130 HP	79"
SW994	130 HP	84"
R2H-4	73 HP	3 whl static

## Soil Compaction



Model	Engine Power	Drum Size
SV204TB	73 HP	54" x 41"
SV204TF	73 HP	54" x 43"
SV204T	73 HP	54" x 41"
SV204D	73 HP	54" x 39"
SV414D	74 HP	67" x 48"
SV414T	74 HP	67" x 44"
SV414TF	74 HP	67" x 48"
SV544D	150 HP	84" x 60"
SV544T	150 HP	84" x 60"

# Crushing/Recycling Equipment



## Trommel Screens



Model	Drum Size
Ecotec Track Mounted TTS 620T	6' 7" X 18' 1"
Phoenix 1600	5' X 16'
Phoenix 2100	6' 4" X 21' 2"
Phoenix 3300	7' 6" X 30' 6"

## Incline Screens



Model	Size
MSC 5700	5' X 12' 2 deck only
MSC 6500	5' X 14' 2 and 3 deck
MSC 8500	5' X 18' 2 and 3 deck
MSC 10500	5' X 22' 2 and 3 deck



# Crushing/Recycling Equipment



## Scalping Screens



Model	Screen Size
RM HS 3500	5' X 9'
RM HS 5000	5' X 12'
RM HS 7500	5' X 16'
RM HS11000	6' X 20'
Ecotec TRS 550 Spaleck	5' X 16'

## Crushers



Models	Engine Power	Weight	TPH
RM 60	91 HP	29,700 pounds	up to 90 TPH
RM70GO	155 HP	47,000 pounds	up to 145 TPH
RM90GO	225 HP	74,700 pounds	up to 225 TPH
RM120GO	400 HP	94,000 pounds	up to 375 TPH

## Conveyors



Model	Size
TSC 65T	65' Track Conveyor
TSC 80T	80' Track Conveyor
TSC 100T	100' Track Conveyor
TRC 75	75' Radial Track Conveyor
TFC 75	75' High Level Feed Conveyor
TFC 75L	75' Low Level Feed Conveyor

## Soil Stabilizers/Road Reclaimers



Model	Engine Power	Operating Weight
SX-2e	380 HP	44,000 lb
SX-4e/ex	450 HP	57,000 lb
SX-6e	675 HP	—
SX-8e	775 HP	—

## Grinders



Model	HP	Operating Weight
5800BT	765 HP	65,000 lb
6800CT	1,200 HP	86,500 lb



# Attachments

## Breakers



Model	Carrier Weight Class	Service Weight	Max Oil Flow
SB 52	1,500 – 2,500 lb	120 lb	7.1 gpm
SB 102	2,500 – 6,500 lb	200 lb	9.2 gpm
SBU 160	5,000 – 11,000 lb	350 lb	13.2 gpm
SBU 220	6,000 – 13,000 lb	500 lb	19.8 gpm
SBU 340	10,000 – 20,000 lb	730 lb	26.4 gpm
SB 452	14,500 – 28,500 lb	970 lb	26.4 gpm
SB 552	20,000 – 33,000 lb	1,150 lb	30.4 gpm
MB 750	22,000 lb – 37,500 lb	1,650 lb	31.7 gpm
MB 1000	26,500 lb – 46,500 lb	2,200 lb	34.3 gpm
MB 1200	33,000 lb – 57,500 lb	2,650 lb	37 gpm
MB 1500	37,500 lb – 64,000 lb	3,300 lb	40.9 gpm
MB 1650	42,000 lb – 70,500 lb	3,650 lb	44.9 gpm
HB 2000	48,500 – 84,000 lb	4,400 lb	50.2 gpm
HB 2500	59,500 – 101,000 lb	5,500 lb	58.1 gpm
HB 3100	70,500 – 115,000 lb	6,800 lb	71.3 gpm
HB 3600	77,000 – 139,000 lb	7,900 lb	79.3 gpm
HB 4100	88,000 – 154,000 lb	9,000 lb	84.5 gpm
HB 4700	99,000 – 176,000 lb	10,400 lb	95.1 gpm
HB 5800	128,000 – 220,000 lb	12,800 lb	103 gpm
HB 7000	154,000 – 265,000 lb	15,400 lb	118.9 gpm
HB 10000	187,000 – 309,000 lb	22,000 lb	140 gpm

## MSD Shears

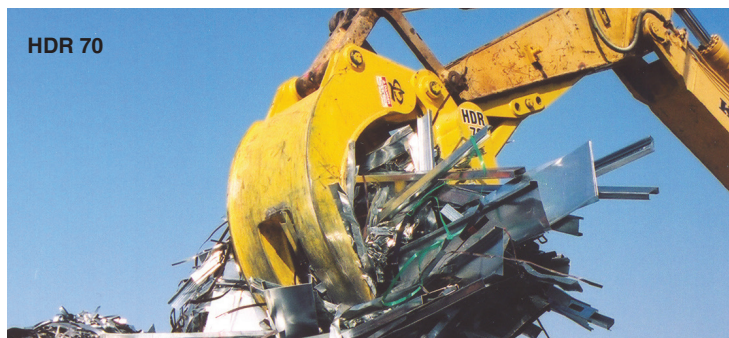


Model	Jaw Opening	Weight	Min Excavator Weight
MSD 7R	10"	1,100 lb	7,500 lb
MSD 800	15"	2,735 lb	15,000 lb
MSD 800R	15"	2,500 lb	18,000 lb
MSD 1000	19"	4,200 lb	20,000 lb
MSD 1000R	19"	4,400 lb	23,000 lb
MSD 1500	22"	6,600 lb	27,000 lb
MSD 1500R	22"	7,000 lb	40,000 lb
MSD 2000	28"	8,850 lb	42,000 lb
MSD 2000R	28"	10,200 lb	50,000 lb
MSD 2250	30"	10,500 lb	44,000 lb
MSD 2250R	30"	12,500 lb	55,000 lb
MSD 2500	32"	12,000 lb	50,000 lb
MSD 2500R	32"	14,600 lb	70,000 lb
MSD 3000	35"	13,300 lb	70,000 lb
MSD 3000R	35"	17,000 lb	95,000 lb
MSD 4000	40"	16,600 lb	80,000 lb
MSD 4000R	40"	19,000 lb	100,000 lb
MSD 4500	38"	17,900 lb	90,000 lb
MSD 4500R	38"	21,000 lb	110,000 lb
MSD 7500	43"	25,500 lb	135,000 lb
MSD 7500R	43"	30,000 lb	160,000 lb
MSD 9500	48"	37,300 lb	175,000 lb
MSD 9500R	48"	43,300 lb	275,000 lb



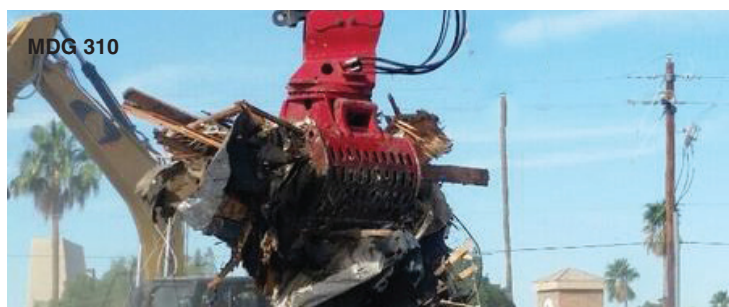
# Attachments

## HDR Grapples



Model	Grapple Opening	Weight	Excavator Weight
HDR 30	88"	1,540 lb	25,000 – 35,000 lb
HDR 40	95"	2,650 lb	35,000 – 46,000 lb
HDR 50	113"	3,500 lb	46,000 – 65,000 lb
HDR 70	116"	5,700 lb	65,000 – 88,000 lb
HDR 100	142"	7,700 lb	88,000 – 111,000 lb
HDR 170	150"	8,700 lb	111,000 – 180,000 lb
HDR 200	150"	11,200 lb	180,000 – 240,000 lb

## Mobile Demolition Grapples



Model	Width	Weight	Excavator Weight
MDG 70	28"	900 lb	11,000 – 19,800 lb
MDG 140	31"	1,900 lb	22,000 – 35,200 lb
MDG 160	35"	2,400 lb	28,600 – 44,000 lb
MDG 250	39"	3,300 lb	37,000 – 62,000 lb
MDG 310	47"	4,200 lb	55,000 – 83,600 lb
MDG 400	54"	6,000 lb	66,000 – 110,000 lb

## Mobile Demolition Processors



Model	Jaw Opening	Weight	Min Excavator Weight
MDP 20 CC	25"	4,600 lb	40,000 lb
MDP 20 CP	25"	5,250 lb	40,000 lb
MDP 27 CC	32"	6,300 lb	55,000 lb
MDP 27 CP	28"	6,950 lb	55,000 lb
MDP 35 CC	38"	8,250 lb	70,000 lb
MDP 35 CP	34"	9,000 lb	70,000 lb
MDP 50 CC	50"	12,400 lb	99,000 lb
MDP 50 CP	50"	13,900 lb	99,000 lb
MDP 90 CP	56"	21,000 lb	187,000 lb

## Universal Processors



Model	Jaw Opening	Weight	Min Excavator Weight
UPX 250 SH	21"	6,300 lb	55,000 lb
UPX 250 CP	29"	6,800 lb	55,000 lb
UPX 250 CC	36"	6,300 lb	55,000 lb
UPX 450 SH	26"	10,550 lb	99,000 lb
UPX 450 CP	34"	10,500 lb	99,000 lb
UPX 450 CC	42"	10,300 lb	99,000 lb
UPX 950 SH	44"	19,000 lb	187,000 lb
UPX 950 CP	63"	20,500 lb	187,000 lb
UPX 950 CC	76"	20,500 lb	187,000 lb
UPX 1800 CC	100"	32,000 lb	Consult Factory
UPX 2800 SH	51"	55,000 lb	Consult Factory



# Attachments

## Stump Shears



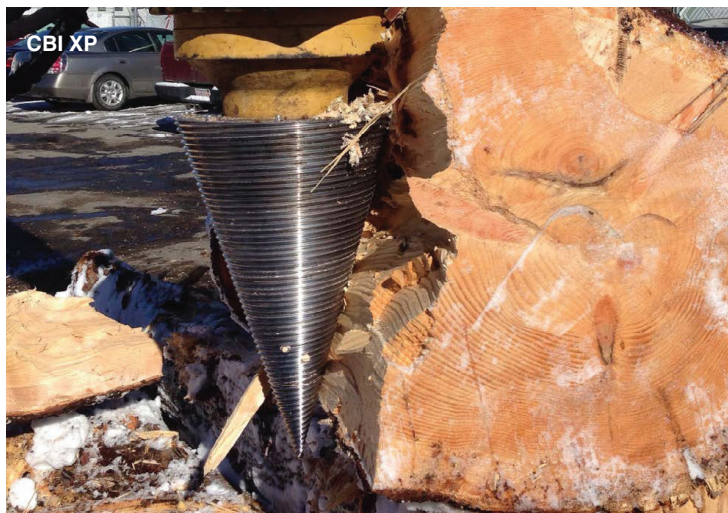
Model	Shear Weight	Excavator Weight Class
SS20	4,000 lb	40,000 – 55,000 lb
SS25	5,500 lb	55,000 – 65,000 lb
SS30	7,000 lb	65,000 – 90,000 lb
SS40	8,000 lb	90,000+ lb

## Concrete Pulverizers



Model	Jaw Opening	Weight	Excavator Weight
CP 40	30"	2,875 lb	36,000 – 46,000 lb
CP 60	36"	3,000 lb	46,000 – 65,000 lb
CP 80	42"	4,475 lb	65,000 – 88,000 lb
CP 100	48"	6,150 lb	88,000 – 111,000 lb
CP 120	54"	9,900 lb	111,000 – 160,000 lb

## Screw Log Splitter



Model	Splitter Weight
CBI XP	680 lb
CBI XLP	1,500 lb

## Mobile Hydraulic Pulverizers



Model	Jaw Opening	Weight	Min Excavator Weight
MPH 200	37"	4,850 lb	44,000 lb
MPH 350	44"	6,650 lb	66,000 lb





## RENTAL TERMS & CONDITIONS\*

Rates subject to change based on market conditions and availability

### Delivery

Delivery quotes available upon request

### Taxes

All rates are subject to local state tax.

### Rates

**Daily** Maximum Machine Hours = 8

**Weekly** Maximum Machine Hours = 40

**Monthly** Maximum Machine Hours = 176

Hours used in excess of maximum hours allowed will be charged in proportion to the rate contracted.

### Customer Responsibility

1. Provides qualified operator.
2. Ensures that normal daily maintenance is performed, including changing oil, grease, filters, etc.
3. Accepts liability for maintenance expense due to abnormal wear and/or damage to machine, tires, bucket, and teeth.
4. Returns the machine in clean condition or pays a minimum additional charge of \$85.00 per hour for equipment cleaning.

### Fuel

Machine must be returned with a full tank of fuel and DEF Fluid, as received, or pay for fuel used.

### Keys

Additional charges will apply if all keys are not returned.

### Insurance

Prior to release of machine, Renter shall provide a "Certificate of Insurance" naming GT Mid Atlantic as "Loss Payee" under the equipment floater policy for dual protection against physical damage and "Additional Insured" under the general liability policy, as approved by GT Mid Atlantic.

GT Mid Atlantic makes no claim of suitability or fitness of performance for equipment rentals.

## LOCATIONS

### MARYLAND

#### Frederick

1561 Tilco Dr  
Frederick, MD 21704  
(301) 682-4441

#### Upper Marlboro

6300 Crain Hwy  
Upper Marlboro, MD 20772  
(301) 627-3938

#### Baltimore

2300 Eskow Ave  
Baltimore, MD 21227  
(410) 247-7454

#### Aberdeen

629 S. Philadelphia Blvd  
Aberdeen, MD 21001-0340  
(410) 575-6580

### DELAWARE

#### Greenwood

12420 Sussex Hwy  
P.O. Box 338  
Greenwood, DE 19950  
(302) 349-5760

### NEW JERSEY

#### Vineland

551 N. Harding Hwy  
Vineland, NJ 08360  
(856) 697-1414

#### Totowa

200 Bomont Pl  
Totowa, NJ 07512  
(973) 785-4900

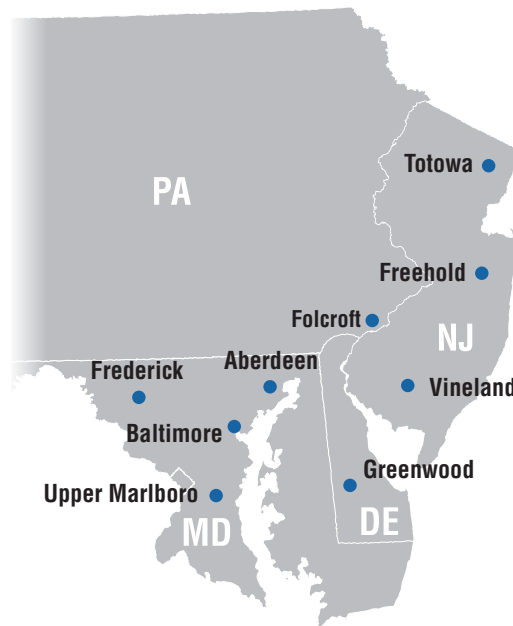
#### Freehold

212 Monmouth Rd  
Freehold, NJ 07728  
(732) 780-4600

### PHILADELPHIA

#### Folcroft

1545 Hook Rd  
Folcroft, PA 19032  
(610) 586-2710



## EQUIPMENT\*\*

- Air Compressors
- Articulated Trucks
- Asphalt and Soil Compactors
- Asphalt Pavers
- Asphalt Distributors
- Compaction Testing
- Compact Track Loaders
- Crawler Tractors/Dozers
- Crushers
- Demolition Equipment
- Excavators
- Forklifts
- Generators
- Hydraulic Breakers
- Lasers
- Light Towers
- Loader Backhoes
- Machine Control Systems
- Milling Machines/Stabilizers
- Motor Graders
- Mowers
- Pumps
- Ride On Brooms
- Rigid Trucks
- Skid Steer Loaders
- Trailers
- Trench Shielding and Shoring
- Wheel Loaders



\*Additional terms & conditions may apply. Please contact your nearest location for details.

\*\*Not all brands available at all locations