



THE  
ULTIMATE  
CRUSHING  
SOLUTION

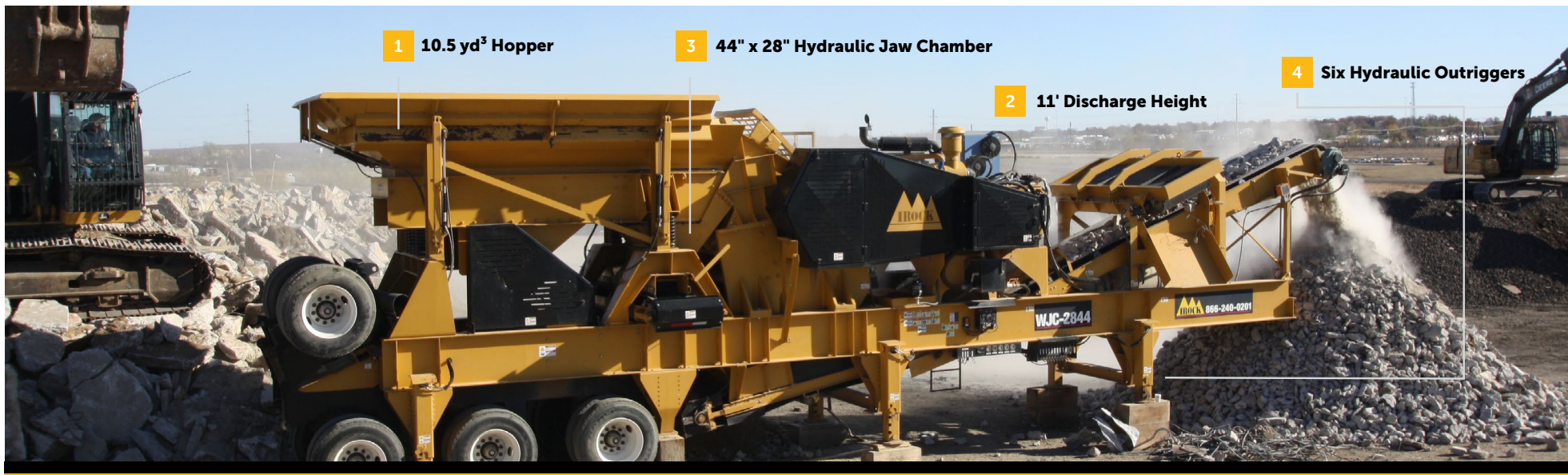
*Portable Jaw Crusher*

# WJC-2844



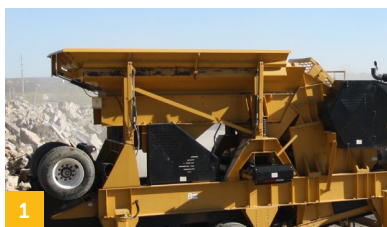
# WJC-2844 Portable Jaw Crusher

**CRUSHER**

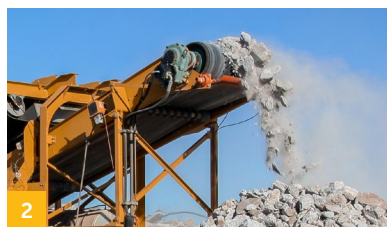


IROCK's WJC-2844 Wheeled Jaw Crusher offers the ideal solution for primary crushing applications. Whether the application requires processing hard rock and recycled concrete or slag and gravel, the WJC-2844 provides an efficient, durable solution, backed by the industry's best service and support.

Engine	CAT® C9.3B 415 HP
Feed Hooper	10.5 yd <sup>3</sup>
Stockpiling Height	11 feet
Jaw Size	28 inches x 44 inches
Weight	107,000 pounds



1 A 10.5 yd<sup>3</sup> hopper combined with the power of a C9.3B Caterpillar® Diesel Engine allows processing rates.



2 The 11' discharge height, one of the highest in the industry, allows not only superior stockpiling capabilities, but also the ability to pair it with screening units. An optional self-cleaning magnet extracts metals from processed material.



3 A hydraulic adjusting chamber easily adjusts to produce a 2" - 6" product.



4 Six hydraulic outriggers offer fast and easy off-loading and leveling of the plant to complete setup in less than an hour.