

TL100 / SL12 / SL12TR / SL15 / SL22EV / SL23 / SL35TR / CX15EV / CX17C / CX26C / CX30C / CX37C / CX42D / CX57C / CX60C



MINI TRACK LOADER, SMALL ARTICULATED LOADERS, MINI EXCAVATORS



NO ONE WILL OUTWORK US.™

CASE
CONSTRUCTION

CONSTRUCTION-GRADE SMALL MACHINES FOR PEOPLE WHO WANT TO BUILD A BUSINESS.



These machines are for anyone who needs to do big things in small spaces and wants to upsize the amount of work they can get done with a pick-up truck and a trailer. The all-new CASE Mini Track Loader, Small Articulated Loaders and Mini Excavators give you the big-time features and big-time attachments you need to knock down more and bigger jobs, so you can grow the size of the projects you tackle, and the size of your business.

THERE'S AN
ATTACHMENT
FOR THAT.



If there's a job that needs doing, these machines give you the attachment you need to do it. So, you can be a jack of all trades and a master of them all, too. This is big-time, heavy-duty equipment with an optional multi-function control connector that lets you tackle everything from loading, tilling, digging, sweeping, grappling, stump grinding and snow blowing to fine grading. And, when you step up to a bigger machine in the future, most of these attachments will step up right along with you. That's an example of the advantages of going with machines that are construction-grade.

THE WORKHORSE THAT TRAILERS LIKE A PONY.

Whether you're looking to load, lift, dig, doze, auger, sweep, blow, rake, grind or plane, this versatile hard worker gives you the capability to get the job done fast and easy. It's easy to operate, goes anywhere, and lets you fit in tight spaces. Lifting capacity is 1,000 pounds. There are more than 40 different attachments available and an optional 14-pin connector which lets you plug into the bigtime attachments. The pilot joystick control makes it easy to operate. And it's all backed by CASE, so everything about it is heavy duty. Including our commitment to helping you grow your business.



EXPLORE THE FEATURES

GET IN. GET OUT.
GET PAID.

The TL100 Mini Track Loader gives you the construction-grade features you need to work easier, faster and more profitably on all kinds of projects.

FUEL-EFFICIENT POWER.

A quiet, smooth, efficient, powerful Tier 4 Final engine minimizes cost of ownership and maximizes uptime with no DEF and no regeneration needed.

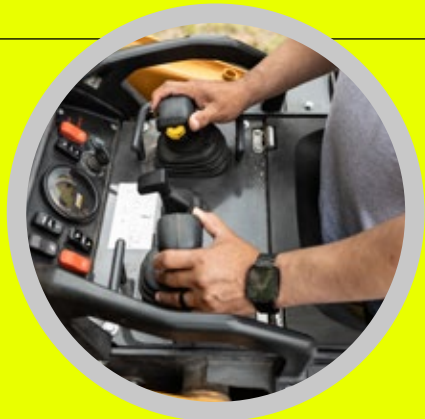
COMPACT TRACK DESIGN.

You get maximum traction on concrete, blacktop, grass, mud and snow. The narrow 7-inch track option allows easy access to narrow entryways, and fits through 36" doors or gates. The wider 10-inch option makes the machine 40" wide, decreasing ground pressure and maximizing stability.



PREMIUM PRODUCTIVITY FEATURES.

ISO pilot joystick control, thumbwheel auxiliary hydraulics and advanced instrumentation create an ergonomic, easy-to-use machine for improved efficiency. Clear sightlines to tracks and bucket cutting edge enhance productivity.



LIFTING PERFORMANCE.

A radial linkage loader arm improves digging performance and decreases required maintenance. A hinge pin height of 86.7" allows for high clearance over many dumpsters and dump trailers.



VERSATILITY.

With 40+ attachment options, the mini track loader has an industry-standard CII interface. You can run soil conditioners, tillers, grapples, grapple buckets, trenchers, mowers, augers and much more. It's designed for simple or complex attachments with standard industry hydraulics and optional 14-pin electrical and CASE drain connectors.

UNLOAD ALL KINDS OF “CAN DO” ON ALL KINDS OF PROJECTS.

We offer 6 different models, five diesel and one electric, to fit the jobs you want to do and your budget. All of them give you bigtime horsepower and lifting capacity. And there are more than 70 attachments available. So, you can buy one machine that does the work of many. They're all easy to operate and give the operator the kind of comfort and control you'd only expect to find on much bigger machines.



EXPLORE THE FEATURES

WHEN IT COMES TO FEATURES,
WE THINK BIG.

Yes, they're small enough to haul around with a pick-up truck and a trailer, but CASE Small Articulated Loaders give you the kind of features that are born on bigtime jobsites.

70+ ATTACHMENTS.

We offer a wealth of attachments, and a CII coupler makes non-CASE attachments compatible with CASE SL Series small articulated loaders. Attachments for our smaller SALs are compatible with the CASE mini track loader. Attachments for the larger SALs are compatible with skid steer loaders and compact track loaders.

CLEAN, QUIET, ELECTRIC POWER.

The SL22EV small articulated loader gives you the option of adding an electric model to your stable. It's perfect for indoor work and any noise-sensitive environment. Also for bidding on the growing number of contracts where EV machinery is required.

NIMBLE.

The new CASE SL Series small articulated loaders are narrower, lighter, and more compact than other machines, making them easy to transport with a regular pickup and a trailer and easy to use in tight spaces.

TELESCOPIC REACH.

Several models feature telescoping arms for added reach when loading trucks or moving material from high areas. These can serve as a replacement for telehandlers.

FORWARD ARTICULATION.

Unlike competitive units with rear articulation, several models put the operator station on the rear section, allowing for larger cab size and easier entry/exit. It also allows the operator to work alongside walls and see where the machine is going. On top of that, it makes the cab more stable with zero cab swing compared to others with rear articulation.

CONSTRUCTION-GRADE SERVICE.

You're not buying from a lawn-and-garden dealer when you go with CASE. You get the full service and support of the CASE dealer network, which has the qualified technicians and agility you need to limit downtime if there's ever an issue.

OPERATOR-FIRST DESIGN.

A simple operator station offers 360-degree visibility and the machine drives like a utility tractor with a steering wheel and loader control. It's designed to make operators feel comfortable instantly, and stay that way for hours.



THERE'S NOTHING MINI ABOUT THEIR CAPABILITIES.

We give you eight Mini Excavators to choose from, including the new CX15EV electric model. So, you can load the one that fits your business like a glove on your pick-up truck trailer. All are construction-grade. You get plenty of power, top-notch operator comfort and control and a wealth of heavy-duty attachments you can add to make short work of the kinds of jobs you want to take on with your growing business.



WE DUG DEEPER TO HELP MAKE YOUR WORK EASIER.

CASE Mini Excavators are built from the ground up to give you top-of-the-line features, comfort and control in a compact machine that's easy-to-own, easy-to-operate, easy-to-maintain and easy-to-trailer.

PURPOSE-BUILT FOR ATTACHMENTS.
Standard multifunction auxiliary hydraulics and a standard 2nd auxiliary circuit + an optional 3rd auxiliary circuit put a world of attachments at your fingertips.

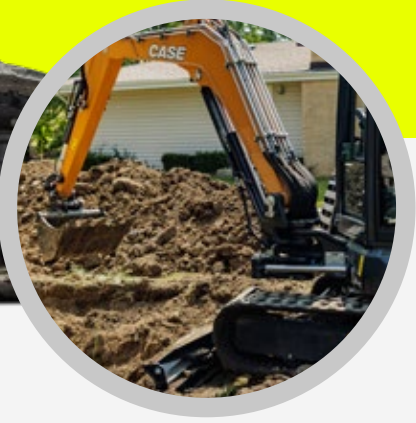


LARGE COLOR MONITOR.
A large LCD color monitor means easy operation and control of 3 power modes, proportional hydraulic controls and easy access to critical machine data.

TRUE ZERO TAILSWING DESIGN.
Get massive performance that lets you work extremely close to buildings and obstacles.

SITEWATCH TELEMATICS.
CASE SiteWatch Telematics are standard with all D Series mini excavators, giving you real-time information and insights on machine performance, utilization and service schedules that's easy to access and understand.

STANDARD STABILITY & BACKFILLING.
The standard two-way and optional six-way blade gives the operator the confidence needed to get the job done.



OUR 7-POINT PLAN FOR MAKING YOUR JOB EASIER.

1 SWIFT, SMOOTH, SMART NEW MACHINES.

We're inventing and rolling out new machines every year. Like the rest of our line, they help you make more money because they work in the real world.

2 HIP-POCKET SUPPORT.

CASE has over 60 dealers in 300+ locations and 6000 team members, and we've nearly doubled the size of our field support team. We're as close as the phone in your pocket, ready to deliver the can-do-now response you need to win.

FINANCING THAT LIGHTENS YOUR LOAD.

From payment schedules with seasonal cash-flow cycles to revolving lines of credit for parts, service, attachments and rentals, our focus on construction customers means flexible solutions you won't get from a traditional banker.

4 OPERATOR-FIRST FOCUS.

We build machines that keep operators comfortable, productive, proud and working hard. Because recruiting and retaining great operators is the bedrock of your success.

5 JOB-CRUSHING ATTACHMENTS & SOLID PARTS.

Our attachments catalog is 200 pages long. Our parts are engineered, tested and proven for durable, reliable performance. So you get both the right tools and the best parts to keep your equipment running strong.

6 REAL WORLD KNOW-HOW.

Technology is the future, but the key to making it work on the jobsite is old-fashioned know-how. We share the knowledge you need to make it make money for you.


7 HUSTLE.


We're 180 years into this, but we're building with the energy of a start-up. We're hungrier than ever to roll up our sleeves and help your business succeed.


To learn more, see your dealer or visit CaseCE.com.




SPECIFICATIONS AND DIMENSIONS

	SPECIFICATIONS					DIMENSIONS		
	Engine	D1305-E4B	Narrow Track (ROC) 35% – lb (kg)	992 lb (450 kg)	Lift Configuration	Radial	Overall Height	56.5 in (1,435 mm)
	Displacement/Cylinders – in³ (L)	77.0 in³ (1,261 L)	Narrow Track (ROC) 50% – lb (kg)	1,416 lb (643 kg)	Max Travel Speed	4.7 mph (7.5 kph)	Overall Length (Without Bucket)	85.6 in (2,175 mm)
	Emissions Certification	Stage V	Narrow Track Tipping Load* – lb (kg)	2,833 lb (1,285 kg)	Fuel Tank (Diesel)	7.9 gal (30 L)	Narrow Track Machine Width	35.0 in (890 mm)
	Gross Horsepower – hp (kW)	24.8 hp (18.5 kW)	Wide Track (ROC) 35% – lb (kg)	1,102 lb (500 kg)	Standard Auxiliary Hydraulics – gpm (L/min)	13.2 gpm (50 L/min)	Narrow Track Bucket Width	36.0 in (914 mm)
	Net Horsepower – hp (kW)	24 hp (18.0 kW)	Wide Track (ROC) 50% – lb (kg)	1,574 lb (714 kg)	Narrow Track Operating Weight – lb (kg)	3,536 lb (1,604 kg)	Wide Track Machine Width	40.4 in (1,026 mm)
	Peak Torque – lb ft (Nm)	59.1 lb·ft (80.1 N·m)	Wide Track Tipping Load* – lb (kg)	3,148 lb (1,428 kg)	Wide Track Operating Weight – lb (kg)	3,783 lb (1,716 kg)	Wide Track Bucket Width	42.0 in (1,067 mm)
NOTE: *Measured using standard equip bucket.								

	SPECIFICATIONS					DIMENSIONS		
	Engine	D902	Lifting Capacity	2,425 lb (1,100 kg)	Driving Hydraulics – Flow Rate	17.2 gpm (65 L/min)	Lifting Height	85.4 in (2,170 mm)
	Displacement/Cylinders – in³ (L)	54.8 in3 (0.898 L)	Tipping Load (ISO) Straight**	2,205 lb (1,000 kg)	Working Hydraulics – Total Flow Rate	7.4 gpm (28 L/min)	Overall Height	81.1 in (2,060 mm)
	Emissions Certification	Tier 4 Final/Stage V	Tipping Load (Other) – See full specs for more info**		Auxiliary 1 – Max Flow Rate	7.4 gpm (28 L/min)	Overall Length (Without Bucket)	87.0 in (2,211 mm)
	Gross Horsepower – hp (kW)	25 hp (18.5 kW)	Max Travel Speed	9.3 mph (15 kph)	Continuous Flow – Max Flow Rate	10.3 gpm (39 L/min)	Machine Width	36.2 in (920 mm)
	Peak Torque – lb ft (Nm)	41.4 lb·ft (56.1 N·m)	Fuel Tank (Diesel)	11.9 gal (45 L)	Operating Weight – Open Cab	2,425 lb (1,100 kg)		





	SPECIFICATIONS					DIMENSIONS		
	Engine	D902	Lifting Capacity	2,425 lb (1,100 kg)	Driving Hydraulics – Flow Rate	17.2 gpm (65 L/min)	Lifting Height	85.4 in (2,170 mm)
	Displacement/Cylinders – in³ (L)	54.8 in3 (0.898 L)	Tipping Load (ISO) Straight**	2,205 lb (1,000 kg)	Working Hydraulics – Total Flow Rate	7.4 gpm (28 L/min)	Overall Height	81.1 in (2,060 mm)
	Emissions Certification	Tier 4 Final/Stage V	Tipping Load (Other) – See full specs for more info**		Auxiliary 1 – Max Flow Rate	7.4 gpm (28 L/min)	Overall Length (Without Bucket)	87.0 in (2,211 mm)
	Gross Horsepower – hp (kW)	25 hp (18.5 kW)	Max Travel Speed	9.3 mph (15 kph)	Continuous Flow – Max Flow Rate	10.3 gpm (39 L/min)	Machine Width	36.2 in (920 mm)
	Peak Torque – lb ft (Nm)	41.4 lb·ft (56.1 N·m)	Fuel Tank (Diesel)	11.9 gal (45 L)	Operating Weight – Open Cab	2,646 lb (1,200 kg)		

	SPECIFICATIONS					DIMENSIONS		
	Engine	D1105	Lifting Capacity	3,086 lb (1,400 kg)	Driving Hydraulics – Flow Rate	22.2 gpm (84 L/min)	Lifting Height	81.4 in (2,067 mm)
	Displacement/Cylinders – in³ (L)	68.5 in3 (1.123 L)	Tipping Load (ISO) Straight**	3,307 lb (1,500 kg)	Working Hydraulics – Total Flow Rate	11.1 gpm (42 L/min)	Overall Height	87.8 in (2,230 mm)
	Emissions Certification	Tier 4 Final/Stage V	Tipping Load (Other) – See full specs for more info**		Auxiliary 1 – Max Flow Rate	11.1 gpm (42 L/min)	Overall Length (Without Bucket)	107.0 in (2,718 mm)
	Gross Horsepower – hp (kW)	26 hp (19.4 kW)	Max Travel Speed	11.8 mph (19 kph)	Continuous Flow – Max Flow Rate	8.7 gpm (33 L/min)	Machine Width	43.3 in (1,100 mm)
	Peak Torque – lb ft (Nm)	52.7 lb·ft (71.5 N·m)	Fuel Tank (Diesel)	5.5 gal (21 L)	Operating Weight – Open Cab	3,362 lb (1,525 kg)		
					Operating Weight – Closed Cab	3,472 lb (1 575 kg)		



**SCAN TO EXPLORE PRODUCT DETAILS.

SPECIFICATIONS AND DIMENSIONS

SL22EV	SPECIFICATIONS				DIMENSIONS			
	Motor Type	3 Phase DC Brushless (IP54)	Lifting Capacity	4,850 lb (2,200 kg)	Tipping Load (ISO) Straight**	4,528 lb (2,054 kg)	Lifting Height	96.5 in (2,450 mm)
	Drive Motor Power	9 hp (6.5 kW)	On-Board Charger	240V 1 Phase	Tipping Load (Other) – See full specs for more info**		Overall Height	90.6 in (2,300 mm)
	Implement Motor Power	16 hp (12.0 kW)	On-Board Charging Time 0-100%	8.7 hr	Working Hydraulics – Total Flow Rate	9.2 gpm (35 L/min)	Overall Length (Without Bucket)	120.2 in (3,054 mm)
	Battery Capacity	24.9 kWh	Off-Board Charger	480V 3 Phase Optional	Auxiliary 1 – Max Flow Rate	9.2 gpm (35 L/min)	Machine Width	48.4 in (1,230 mm)
	Expected Run Time	5 - 6 hr	Off-Board Charging Time 0-100%	1.7 hr	Operating Weight – Open Cab			
	Max Travel Speed	11.2 mph (18 kph)						
SL23	SPECIFICATIONS				DIMENSIONS			
	Engine	V1505	Lifting Capacity	4,850 lb (2,200 kg)	Driving Hydraulics – Flow Rate	17.2 gpm (65 L/min)	Lifting Height	96.5 in (2,450 mm)
	Displacement/Cylinders – in³ (L)	91.4 in3 (1,498 L)	Tipping Load (ISO) Straight**	4,982 lb (2,260 kg)	Working Hydraulics – Total Flow Rate	8.5 gpm (32 L/min)	Overall Height	90.6 in (2,300 mm)
	Emissions Certification	Tier 4 Final/Stage V	Tipping Load (Other) – See full specs for more info**		Auxiliary 1 – Max Flow Rate	8.5 gpm (32 L/min)	Overall Length (Without Bucket)	123.8 in (3,145 mm)
	Gross Horsepower – hp (kW)	26 hp (19.4 kW)	Max Travel Speed	12.4 mph (20 kph)	Continuous Flow – Max Flow Rate	10.0 gpm (38 L/min)	Machine Width	48.4 in (1,230 mm)
	Peak Torque – lb ft (Nm)	68.3 lb·ft (92.6 N·m)	Fuel Tank (Diesel)	9.8 gal (37 L)	Operating Weight – Open Cab			
SL35TR	SPECIFICATIONS				DIMENSIONS			
	Engine	V2403 CR	Lifting Capacity – See full specs for more info**		Driving Hydraulics – Flow Rate	29.6 gpm (112 L/min)	Lifting Height	169.8 in (4,312 mm)
	Displacement/Cylinders – in³ (L)	148.5 in3 (2,434 L)	Tipping Load (ISO) Straight – See full specs**		Working Hydraulics – Total Flow Rate	18.5 gpm (70 L/min)	Overall Height	89.6 in (2,275 mm)
	Emissions Certification	Tier 4 Final/Stage V	Max Travel Speed	18.6 mph (30 kph)	Auxiliary 1 – Max Flow Rate	18.5 gpm (70 L/min)	Overall Length (Without Bucket)	160.1 in (4,067 mm)
	Gross Horsepower – hp (kW)	65 hp (48.6 kW)	Fuel Tank (Diesel)	18 gal (68 L)	Continuous Flow – Max Flow Rate	13.2 gpm (50 L/min)	Machine Width	52.8 in (1,340 mm)
	Peak Torque – lb ft (Nm)	146.4 lb·ft (198.5 N·m)			Operating Weight – Open Cab			
CX15EV	SPECIFICATIONS				DIMENSIONS			
	Motor Type	Internal permanent magnet (IPM)	Lifting Capacity – See full specs for more info**		Working Hydraulics – Total Flow Rate	7.4 gpm (28 L/min)	Overall Reach Height	10 ft 5 in (3,115 mm)
	Drive Motor Power	21 hp (16 kW)	Tipping Load – See full specs for more info**		Auxiliary 1 – Max Flow Rate	7.4 gpm (28 L/min)	Maximum Dig Radius	12 ft 0 in (3,645 mm)
	Nominal Battery Voltage	102 Volts	On-Board Charger	120V 1 Phase	Operating Weight – Standard w/ Roll Bar	3,130 lb (1,420 kg)	Overall Height	7 ft 7 in (2,300 mm)
	Battery Capacity	21.5 kWh	On-Board Charging Time 0-100%	14 hr	Operating Weight – Long Arm w/ Roll Bar	3,139 lb (1,424 kg)	Overall Transport Length	10 ft 5 in (3,180 mm)
	Expected Run Time	4 - 8 hr	Off-Board Charger	480V 3 Phase Optional			Machine Width – Retracted Tracks	2 ft 7 in (790 mm)
	Max Travel Speed	2.4 mph (3.8 kph)	Off-Board Charging Time 0-100%	1.5 hr				



**SCAN TO EXPLORE PRODUCT DETAILS.

SPECIFICATIONS AND DIMENSIONS

CX17C



SPECIFICATIONS					
Engine	D902	Lifting Capacity – See full specs for more info**		Pilot Control Hydraulics – Max Capacity	1.8 gpm (6.8 L/min)
Displacement/Cylinders – in³ (L)	54.8 in³ (898 cc)	Tipping Load – See full specs for more info**		Auxiliary 1 – Max Flow Rate	7.9 gpm @ 2,988 psi
Emissions Certification	Tier 4 Final	Max Travel Speed	2.6 mph (4.2 kph)	Operating Weight – Short Arm	3,910 lb (1,775 kg)
Gross Horsepower – hp (kW)	16.8 hp (12.5 kW)	Fuel Tank (Diesel)	5.3 gal (20 L)	Operating Weight – Long Arm	4,110 lb (1,865 kg)
Max Engine Torque – lb ft (Nm)	39.5 lb ft (53.5 Nm)				

DIMENSIONS	
Overall Reach Height	11 ft 9 in (3,580 mm)
Maximum Dig Radius	12 ft 10 in (3,900 mm)
Overall Height	7 ft 7 in (2 320 mm)
Overall Transport Length	11 ft 5 in (3 480 mm)
Machine Width – Retracted Tracks	3 ft 3 in (990 mm)

CX26C



SPECIFICATIONS					
Engine	D1305	Lifting Capacity – See full specs for more info**		Pilot Control Hydraulics – Max Capacity	2.7 gpm (10.4 L/min)
Displacement/Cylinders – in³ (L)	77.0 in³ (1,261 cc)	Tipping Load – See full specs for more info**		Auxiliary 1 – Max Flow Rate	12.2 gpm (46 L/min)
Emissions Certification	Tier 4 Final	Max Travel Speed	2.7 mph (4.3 kph)	Canopy Operating Weight – Short Arm	5,520 lb (2,505 kg)
Gross Horsepower – hp (kW)	24.8 hp (18.5 kW)	Fuel Tank (Diesel)	7.9 gal (30 L)	Cab Operating Weight – Short Arm	5,850 lb (2,655 kg)
Max Engine Torque – lb ft (Nm)	60.0 lb ft (81.4 Nm)				

DIMENSIONS	
Overall Reach Height	13 ft 7 in (4,150 mm)
Maximum Dig Radius	14 ft 8 in (4,480 mm)
Overall Height	8 ft 2 in (2,500 mm)
Overall Transport Length	13 ft 3 in (4,030 mm)
Overall Track Width	4 ft 11 in (1,500 mm)

CX30C



SPECIFICATIONS					
Engine	D1305	Lifting Capacity – See full specs for more info**		Pilot Control Hydraulics – Max Capacity	2.7 gpm (10.4 L/min)
Displacement/Cylinders – in³ (L)	77.0 in³ (1 261 cc)	Tipping Load – See full specs for more info**		Auxiliary 1 – Max Flow Rate	12.2 gpm (46 L/min)
Emissions Certification	Tier 4 Final	Max Travel Speed	2.7 mph (4.3 kph)	Canopy Operating Weight	6,306 lb (2,860 kg)
Gross Horsepower – hp (kW)	24.8 hp (18.5 kW)	Fuel Tank (Diesel)	7.9 gal (30 L)	Cab Operating Weight	6,636 lb (3,010 kg)
Max Engine Torque – lb ft (Nm)	60.0 lb ft (81.4 Nm)				

DIMENSIONS	
Overall Reach Height	14 ft 0 in (4,270 mm)
Maximum Dig Radius	15 ft 3 in (4,650 mm)
Overall Height	8 ft 2 in (2,500 mm)
Overall Transport Length	13 ft 9 in (4,180 mm)
Overall Track Width	5 ft 1 in (1,550 mm)

CX37C



SPECIFICATIONS					
Engine	3TNV88F-ESHYB	Lifting Capacity – See full specs for more info**		Pilot Control Hydraulics – Max Capacity	2.6 gpm (9.9 L/min)
Displacement/Cylinders – in³ (L)	100.2 in³ (1,642 cc)	Tipping Load – See full specs for more info**		Auxiliary 1 – Max Flow Rate	16.0 gpm (60.5 L/min)
Emissions Certification	Tier 4 Final	Max Travel Speed	2.6 mph (4.2 kph)	Canopy Operating Weight – Short Arm	7,990 lb (3,625 kg)
Gross Horsepower – hp (kW)	24.4 hp (18.2 kW)	Fuel Tank (Diesel)	10.5 gal (40 L)	Cab Operating Weight – Short Arm	8,300 lb (3,765 kg)
Max Engine Torque – lb ft (Nm)	69.4 lb ft (94.1 Nm)				

DIMENSIONS	
Overall Reach Height	15 ft 9 in (4,810 mm)
Maximum Dig Radius	17 ft 5 in (5,315 mm)
Overall Height	8 ft 2 in (2,500 mm)
Overall Transport Length	15 ft 9 in (4,790 mm)
Overall Track Width	5 ft 9 in (1,740 mm)



**SCAN TO EXPLORE PRODUCT DETAILS.

SPECIFICATIONS AND DIMENSIONS

CX420



SPECIFICATIONS					
Engine	D1803	Lifting Capacity – See full specs for more info**	Working Hydraulics – Total Flow Rate	5.9 gpm (22.3 L/min)	
Displacement/Cylinders – in³ (L)	111.4 in³ (1,826 cc)	Tipping Load (ISO) Straight – See full specs**	Auxiliary 1 – Max Flow Rate	18.5 gpm (70 L/min)	
Emissions Certification	Tier 4 Final	Max Travel Speed	2.8 mph (4.5 kph)	Auxiliary 2 – Max Flow Rate	10.6 gpm (40 L/min)
Gross Horsepower – hp (kW)	43.3 hp (32.3 kW)	Fuel Tank (Diesel)	15.9 gal (60 L)	Canopy Operating Weight – Short Arm	9,259 lb (4,200 kg)
Peak Torque – lb ft (Nm)	110.6 lb ft (150 Nm)			Cab Operating Weight – Short Arm	9,590 lb (4,350 kg)

DIMENSIONS	
Overall Reach Height	16 ft 5 in (5,010 mm)
Maximum Dig Radius	17 ft 9 in (5,400 mm)
Overall Height	8 ft 3 in (2,510 mm)
Overall Transport Length	17 ft 5 in (5,300 mm)
Overall Track Width	5 ft 9 in (1,750 mm)

CX57C



SPECIFICATIONS					
Engine	4TNV98C	Lifting Capacity – See full specs for more info**	Pilot Control Hydraulics – Max Capacity	2.5 gpm (9.5 L/min)	
Displacement/Cylinders – in³ (L)	203 in³ (3,319 cc)	Tipping Load (ISO) Straight – See full specs**	Hammer Circuit – Max Flow Rate	15.3 gpm (57.8 L/min)	
Emissions Certification	Tier 4 Final	Max Travel Speed	2.5 mph (4.1 kph)	Auxiliary 2 – Max Flow Rate	7.9 gpm (30 L/min)
Gross Horsepower – hp (kW)	66.9 hp (49.9 kW)	Fuel Tank (Diesel)	31.7 gal (120 L)	Cab Operating Weight – Short Arm	12,270 lb (5,565 kg)
Peak Torque – lb ft (Nm)	173.7 lb ft (235.4 Nm)			Cab Operating Weight – Long Arm	12,320 lb (5,590 kg)

DIMENSIONS	
Overall Reach Height	19 ft 0 in (5,780 mm)
Maximum Dig Radius	20 ft 2 in (6,150 mm)
Overall Height	8 ft 4 in (2,550 mm)
Overall Transport Length	19 ft 4 in (5,900 mm)
Overall Track Width	6 ft 4 in (1,920 mm)

CX60C



SPECIFICATIONS					
Engine	4TNV98C	Lifting Capacity – See full specs for more info**	Pilot Control Hydraulics – Max Capacity	2.5 gpm (9.5 L/min)	
Displacement/Cylinders – in³ (L)	203 in³ (3 319 cc)	Tipping Load (ISO) Straight – See full specs**	Hammer Circuit – Max Flow Rate	14.5 gpm (55 L/min)	
Emissions Certification	Tier 4 Final	Max Travel Speed	2.5 mph (4.0 kph)	Auxiliary 2 – Max Flow Rate	7.9 gpm (30 L/min)
Gross Horsepower – hp (kW)	64.7 hp (48.3 kW)	Fuel Tank (Diesel)	21.7 gal (82 L)	Cab Operating Weight – Short Arm	12,940 lb (5,870 kg)
Peak Torque – lb ft (Nm)	173.6 lb ft (235.4 Nm)			Cab Operating Weight – Long Arm	13,760 lb (6,240 kg)

DIMENSIONS	
Overall Reach Height	18 ft 8 in (5,680 mm)
Maximum Dig Radius	20 ft 2 in (6,150 mm)
Overall Height	8 ft 4 in (2,550 mm)
Overall Transport Length	18 ft 3 in (5,600 mm)
Overall Track Width	6 ft 6 in (1,990 mm)



**SCAN TO EXPLORE PRODUCT DETAILS.

NO ONE WILL OUTWORK US.™



©2023 CNH Industrial America LLC. All rights reserved. CASE, CNH Industrial Capital and CNH Industrial Trademarks are registered in the United States and many other countries, owned by or licensed to CNH Industrial NV, its subsidiaries or affiliates.

IMPORTANT: CASE Construction Equipment Inc. reserves the right to change these specifications without notice and without incurring any obligation relating to such change. Availability of some models and equipment builds vary according to the country in which the equipment is used. The illustrations and text may include optional equipment and accessories and may not include all standard equipment. Your CASE dealer/distributor will be able to give you details of the products and their specifications available in your area.

SAFETY NEVER HURTS!™ Always read the Operator's Manual before operating any equipment. Inspect equipment before using it, and be sure it is operating properly. Follow the product safety signs, and use any safety features provided.

Form No. CCE202311SMAT